

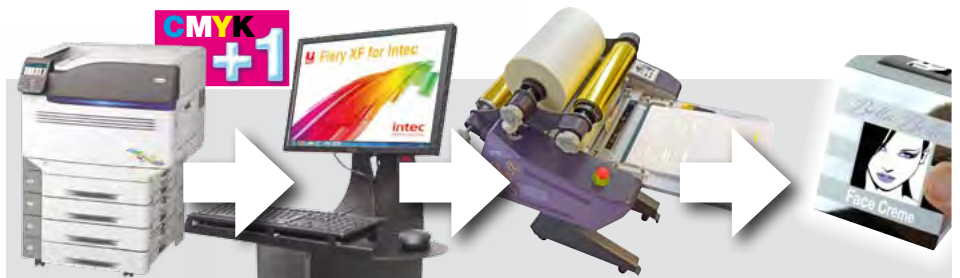
OPTIMIZED FOR FOILING

NEW INTEC BUNDLE: DELIVERING TOTALLY SUPERIOR, PREMIUM & UNIQUE RESULTS.

THE BUNDLE

- #1. **ColorSplash** CS5000
- #2. **Fiery XF** for Intec RIP
- #3. **ColorFlare** CF750

Amazing bundle deals!
Contact Intec - must end 31st May 2019



PRINTING, COLOUR MANAGEMENT, FOILING. RESULT!

The new 'Optimized for Foiling' bundle is a complete game-changer.

A perfectly matched suite of printing and finishing equipment, taking ultra sharp digital printing to new levels through a global-leading colour management RIP - pushing premium print and foiling output to a whole new level!

The three core products combined in this bundle are:

- ColorSplash CS5000 digital printer
- Fiery XF for Intec RIP
- ColorFlare CF750 foiler/laminator

Prepare for a quantum leap

High-quality devices paired together will always be destined to produce great results - and with the additional benefit of the new 'optimized for foiling mode' - now resident within the Fiery XF for Intec RIP - this key ingredient will make a quantum leap in the delivery of premium print.

What's behind the bundle?

The past two years has seen Intec strive to develop new products to complement it's class-leading ColorSplash digital printers - and ColorFlare has been one of the success stories of recent times.

Working with toner-based devices, ColorFlare easily adds that extra WOW factor to printed sheets. The decorative effects include; metallic foiling, holographic effects and various lamination finishes.

As part of ColorFlare's ongoing development, it was found that the greater the amount of toner that could be laid down on a printed sheet, the greater the end result appeared to be.

Gold metallic foiling with an embossed feel!

Therefore, through demanding technical development and exacting trialling - the 'optimized for flaring' mode was born! By selecting this option in the Fiery RIP, ColorSplash CS5000 can deploy an incredibly high-build level of toner into the desired areas.

Result!

When printed sheets are run through the ColorFlare, the resulting finish of the metallic foil is one of superior smoothness and density - appearing very similar to embossing! Intec sales team will be happy to tell you even more about foiling aspects.



Spot gloss film over red metallic foiling



WORKFLOW & COLOUR MANAGEMENT

THE BUNDLE - Part 1 of 3
OPTIMIZED FOR FOILING

Maximum power and control

We can't overstate the incredible value and power of the Fieri XF for Intec RIP.

The software delivers the exact same feature-rich functionality of the parent EFI Fieri Command Workstation® - but at a fraction of the cost.

The features of the Fieri XF for Intec RIP are manifold, but in general terms, the RIP delivers a level of control over colour management and workflow, that is simply impossible to achieve via ordinary printer drivers. [Click here](#) to view the product page on the Intec website, or call Intec sales team to get full details. Meanwhile, here's just a few of the features that help improve colour management and workflow.

Workflows. Easily create workflow channels for each output device on the network, with default settings for regular job options.

Range of settings. A fantastic array of user-defined settings for print settings, media type, media size, fuser temperature, colour options, (including 5th colour use), underprinting, image position, output destinations and more.

Creep adjustment. Absolutely essential to compensate for space taken around the spine on multi-page booklets.

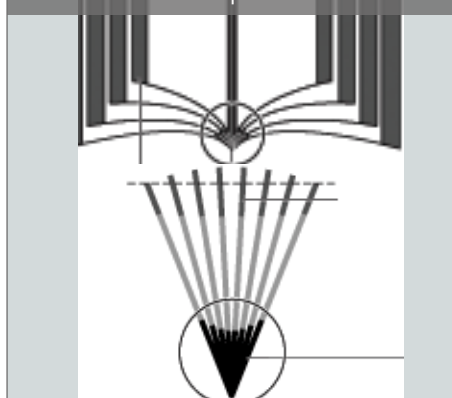
N-Up and crop marks. Take a single page (such as a business card artwork) and step and automatically repeat as required to fill the sheet. Add crop marks, gutter and bleed as desired - easily.

Spot colour conversion. Remap a rogue spot colour to exactly match the expectation, without that disappointingly dull CMYK conversion.

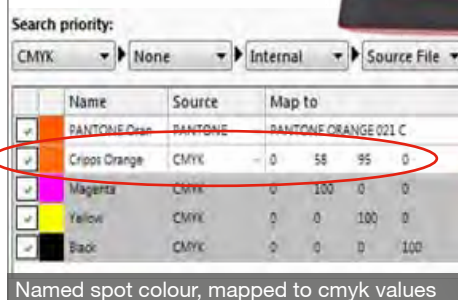
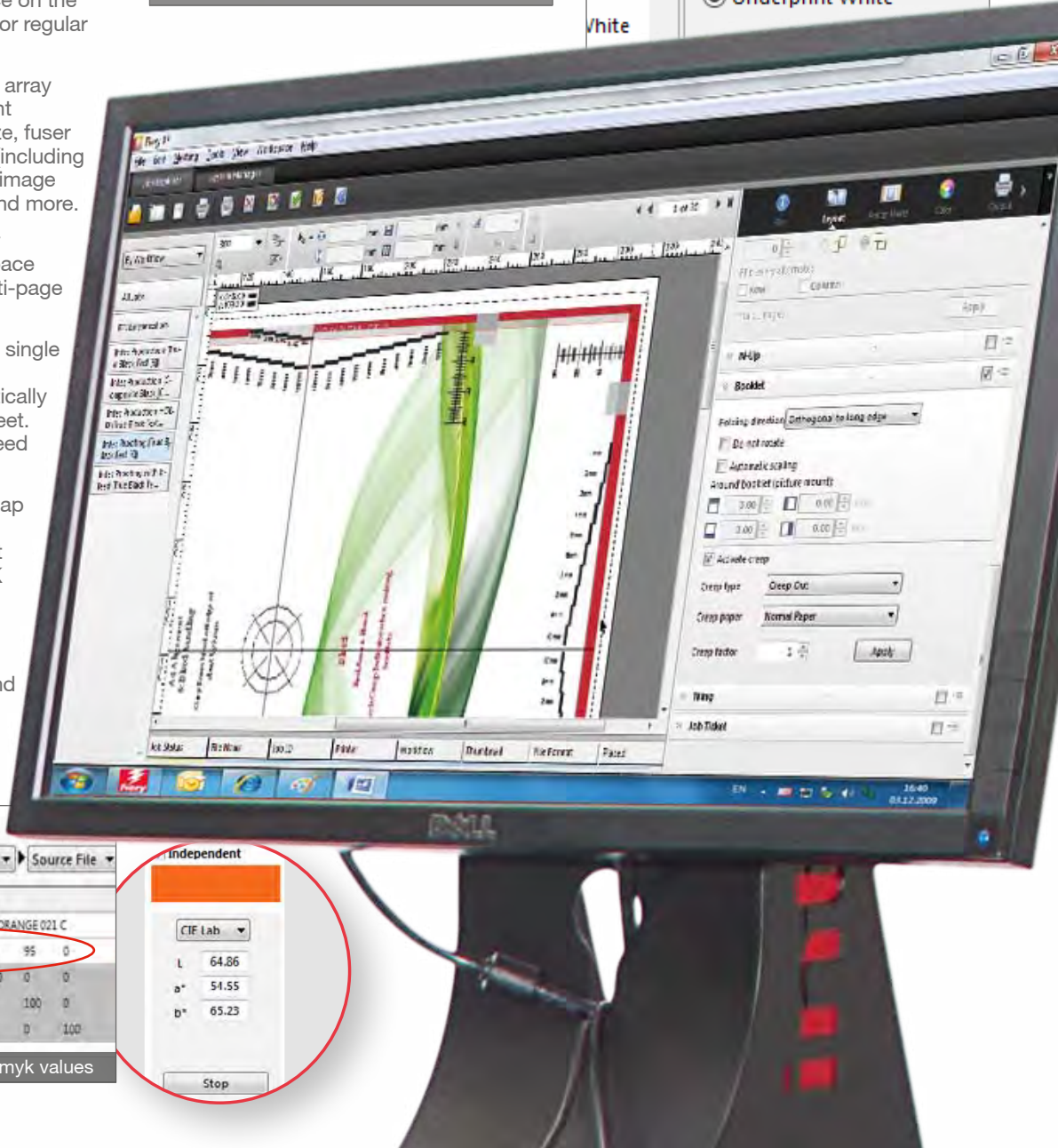
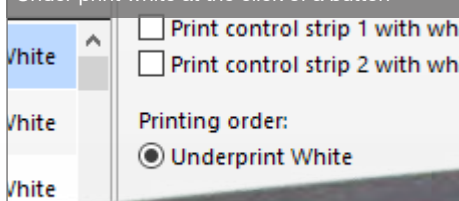
ColorSplash 5th colour implementation. The CS5000 can print both uvClear toner and also White toner. The density and/or overprint/underprint of each can be controlled.



'Page creep' can be controlled and bleed areas filled with content - for perfect booklets



Under print white at the click of a button



DIGITAL PRINTING

THE BUNDLE - Part 2 of 3

OPTIMIZED FOR FOILING

ColorSplash

More than just a digital printer

Capable of 50 A4 (US letter) pages per minute, on up to 500gsm media with smooth tonal sweeps, vibrant colour rendition and an optical resolution of 1200dpi (optimised to 4800dpi) - ColorSplash is already ahead of the game. [Click here](#) to view product on website.

Plus, all this comes at a class-leading price point - but the real benefit which kicks all other printers into touch, is the 5th colour station, which enables the use of uvClear and White toner! This functionality opens up a whole new world of creativity where unique and stunning effects can easily be achieved, adding extra value to print.

CMYK + uvClear toner

uvClear toner brings images to life, creating the depth that makes the print look like it was imaged on a substantially more expensive device. The effect can look at its best when creatively isolating areas to be treated in the style of traditional spot varnish. The Ultraviolet qualities also make this option perfect for security-related print. Personnel identity cards, access control wristbands, concert tickets are good examples - where a UV light source can make the imaging obvious to the human eye.

CMYK + White toner

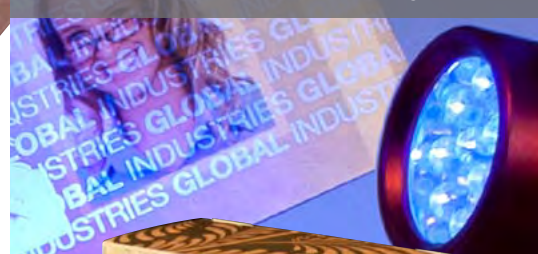
Printing white text or graphics on coloured media is no longer limited to using the slow and costly process of litho/screen printing.

Cost effective short run printing is now possible on coloured or transparent stock up to 500gsm. In addition, stunning colours can be reproduced on dark media by under printing white (and choosing underprint in the Fiery XF for Intec RIP), and overlaying the colour design.

White toner printed onto coloured media



uvWhite toner revealed under Ultraviolet light



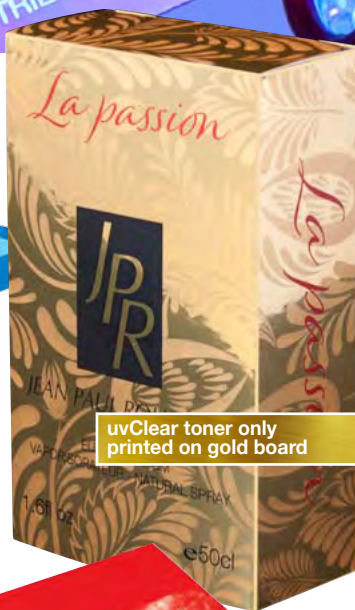
1.3 metre banner media runs perfectly, especially with banner extension tray



uvClear toner only, printed on coloured envelopes



uvClear toner only printed on gold board



White toner with CMYK toners printed on coloured envelopes



White toner only, printed on coloured board



FOILING, LAMINATION & HOLOGRAPHICS

THE BUNDLE - Part 3 of 3
OPTIMIZED FOR FOILING

colorflare

Embellishing printed sheets is so easy...

The mid-range model in the ColorFlare range has so much to offer for it's extremely affordable price point.

This dual foiler/laminator is a compact device requiring no more room than a free-standing copier. Yet it has an enormous appetite for light to medium production work! The optional dual media delivery assembly (as shown on the CF750LX model below), further enhances productivity by holding your choice of lamination/holographic film and foil, in readiness for use. [Click here](#) to view product on website.

Perfect bundle partners

Through Intec's continual product R&D, as described on page 1, the ColorSplash printer and Fiery XF for Intec RIP, have both been developed to maximise the potential of the ColorFlare range.

This is where the fruits of the 'Optimized for Foiling' mode can be seen to pay dividends.

Metallic foils and spot gloss films are attracted to the designated areas on printed sheets by the toner, as determined in the artwork. Intec has discovered that being able to apply a high-build level of toner where required, this vastly improves the surface finish and visual quality of the end result. In some cases the toner is visible to the naked eye and the effect can appear like embossing or engraving!

Check pricing with Intec sales team and get this bundle working for you - it's a real game-changer.

A 600mm film poster on the ColorFlare, with gloss lamination applied



Variations of metallic foiling applied to book jacket, cookie box and wedding invite



Silver metallic foiling. High-build toner makes it feel like engraved gunmetal



'Carbon Fibre' holographic effect film added to supercar postcard set



METALLIC FOILS SELECTION PACK...

To complement the extremely popular ColorFlare product range, Intec has launched a brand new media selection pack of coloured metallic foils.

The selection pack contains 5 special length 60 metre rolls of our most popular coloured metallic foils. The product is exactly the same spec' as our full length rolls, and still supplied on the standard 3" cores, which fits all ColorFlare models and the majority of other machines in the field.

This great new pack will give users an affordable opportunity to experiment with a wider range of finishes – and also have a broader choice in stock to offer customers – on demand.



The pack, which contains one roll each of: Pink, Silver, Red, Green and Blue metallic foils, is in stock and available to purchase. Stock code: CFMETSTART.

Get current price and order place an order today!

**REKLAMA
POLYGRAF
OBALY**

Intec dealer for Slovakia, Mailtec, will be demonstrating ColorSplash printing and LPS215 roll-to-roll label printing & finishing. Visit us on stand 3 - A01

MAILTEC

April 9 - 11
PVA Expo Center
Prague



The Gulf Commercial Group will be on stand 1D12 showing the complete range of Intec printing and finishing solutions.



April 15 - 18
Dubai World Trade
Centre, Dubai



Intec staff will be supporting Youssef Allam, our distributor for Egypt. Intec ColorSplash, ColorFlare, ColorCut printing and finishing solutions will be on show and in action.



April 18 - 20
CICC Cairo
Egypt

 **KEEP UP-TO-DATE WITH OUR GLOBAL EXPOS, ON OUR WEBSITE**



INTERNATIONAL HEADQUARTERS
Intec Printing Solutions Limited
Tel: 0044 1202 845960

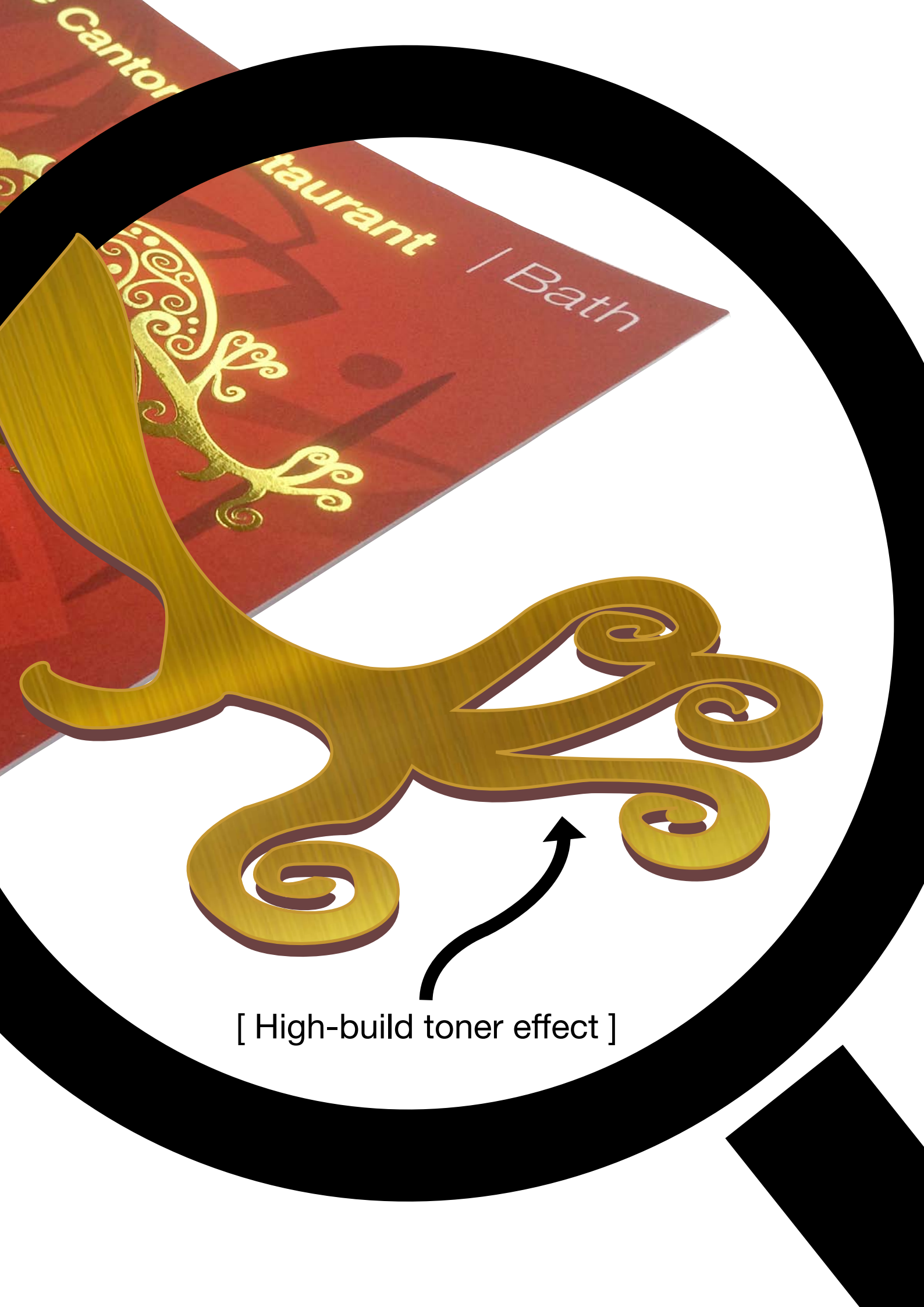


AMERICAS HEADQUARTERS
Intec Printing Solutions Corporation
Tel: 001 813 949 7799

Every Intec consumable sold generates a donation to one of several charitable causes around the world. Thank you for helping us make the world a better place. **Team Intec**



NEW WATER & SANITATION PROJECT



[High-build toner effect]