

BC480
Business
Card Cutting

User Manual



Version 1 - January 2019 - TW
Version 3 - September 2020 - TW

Chapter One

Important Safety Instructions 4

1 Safety Precautions 4

1-1 Security matters..... 4

1-2 Warning labels..... 4

2 Safety Features..... 4

2-1 Articles 4

2-1-1 Articles and operating limits 4

2-1-2 Locking lid - stationary lid 5

3 Product Dimensions..... 5

Chapter Two

Machine specifications and contents..... 6

1 . Machine Summary..... 6

1-1 Main purpose for usage..... 6

1-2. Machine Specifications 6

1-3 Accessories..... 7

1-4 Description of machine parts 8

Chapter Three

Set up - Operating, maintenance and troubleshooting11

1. Set up..... 11

1-1 Setting up methods and procedures 11

1-2 Paper Feed Tray 12

1-3 Waste Paper Tray 12

1-4 Card Collection Tray 13

1-5 Mains Power..... 13

1-6 Placement of machine for operation 13

2. Operation 14

2-1 Cutting workflow..... 14

2-2 Operation panel description 15

LCD display description..... 15

Card option..... 16

System option - See Section 2-5-5 16

Manual operate 16

Language 16

Test your cutting mode with a sheet of paper/card..... 17

Number of cards to be cut..... 17

2-3 Datum selection 18

2-3-1 'MARK' printing set up 19

2-4 Cutting modes..... 20

2-4-1 Selection of rotary knife cassette (longitudinal knife)..... 20

2-4-2 Cutting modes - paper sizes..... 20

2-4-3 Cutting templates 21

2-4-4 Selecting the cutting mode 33

2-5 Parameter settings description 33

2-5-1 Cutting quantity 33

2-5-2 Datum selection..... 33

2-5-3 Card error adjustment method 33

1. First cutting compensation 34

2. Mark position compensation 34

3. Card length compensation 35

4. Groove width compensation..... 35

2-5-4 System settings 36

1. System speed 37

2. System accuracy compensation 37

3. Five column blade width 38

4. Three column blade width 38

5. First cutting compensation 39

6. Mark position compensation 39

7. Groove width compensation..... 39

8. Last card compensation 40

9. Penultimate cards compensation..... 40

10. Third from last compensation..... 41

11. Subtotal clear 41

12. Restore factory settings..... 41

8. Firmware version 42

2-5-6 CUSTOM mode card settings 42

1. Card width 44

2. Card length 44

3. Card rows 44

4. Card columns 45

5. First cutting length 45

6. Mark position length..... 46

7. Groove width 46

8. First cutting compensation 46

9. Mark position compensation 47

10. Card length compensation 47

9. Groove width compensation..... 48

2-6 Operating methods and processes..... 48

1. Input power..... 48

2. Paper settings..... 48

3. The left or right position setting of paper..... 49

2. Feed cutting..... 49

2-7 Changing the longitudinal cutting cassette 49

Removing the longitudinal cutter (cutting cassette)..... 49

Installing the longitudinal cutter (cutting cassette)..... 50

3. Troubleshooting 51

3-1 Safety cover failure 51

3-2 Jam handling..... 51

3-3 Crosscutting knife cutting failure 52

3-4 MARK' was not detected..... 52

3-5 Paper too narrow 53

3-6 Poor feed..... 54

Support contact information 55

Chapter One

Important Safety Instructions

Before installing and using the BC480 please read the following safety instructions. This will help prevent accidents or loss of equipment and allow you to fully understand the contents and then set up, operate and maintain the machine in accordance with this.

1 Safety Precautions

1-1 Security matters

In order to prevent accidents, strict compliance with the following matters:

- The machines's power cord ground wire must be grounded
- Do not connect or disconnect with wet hands, as this will cause an electric shock
- Do not use a damaged plug or lead, as this could cause a fire or an electric shock
- Do not use other voltage and power supply, other than specified, as this will cause a fire and an electric shock.
- Ensure all hair, neckties, necklaces are kept free of the feeding table to avoid injury
- Do not allow children to use this equipment
- Turn off the power when the machine is not in use

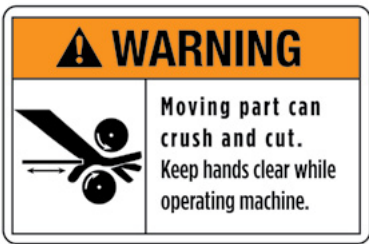
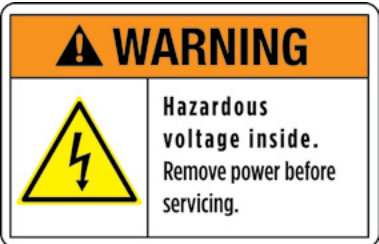
Before any action to remove wate media or to troubleshoot the machine and In exceptional circumstances, please cut off the power supply.

Please contact your supplier for machine operating instructions should you be unable to follow any of the manuals instructions or if the machine fails to work.

1-2 Warning labels

The warning labels are placed so you are aware of areas where caution should be taken.

1. Caution electric shock - do not touch machine with wet hands and remove before servicing.
2. Caution moving parts - do not place hands in machine whilst in operation.
3. Caution nipping hands - do not place hands in machine.



Operators should pay attention to the location of the warning labels shown here.

2 Safety Features

In order to prevent accidents, the machine has a cover interlock feature to avoid anyone operating the machine.

2-1 Articles

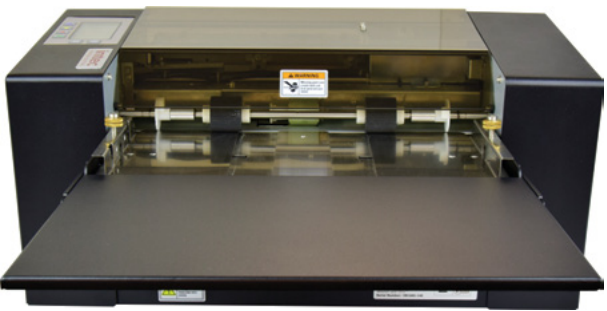
2-1-1 Articles and operating limits

The machine has a locking safety cover that prevents items from getting caught in the working mechanism of the machine.

If the cover is removed during operation the machine will stop working.

2-1-2 Locking lid - stationary lid

1. Top cover
2. Locked-cover-switch
3. Operate side cover (left cover)
4. Right side cover
5. Front cover

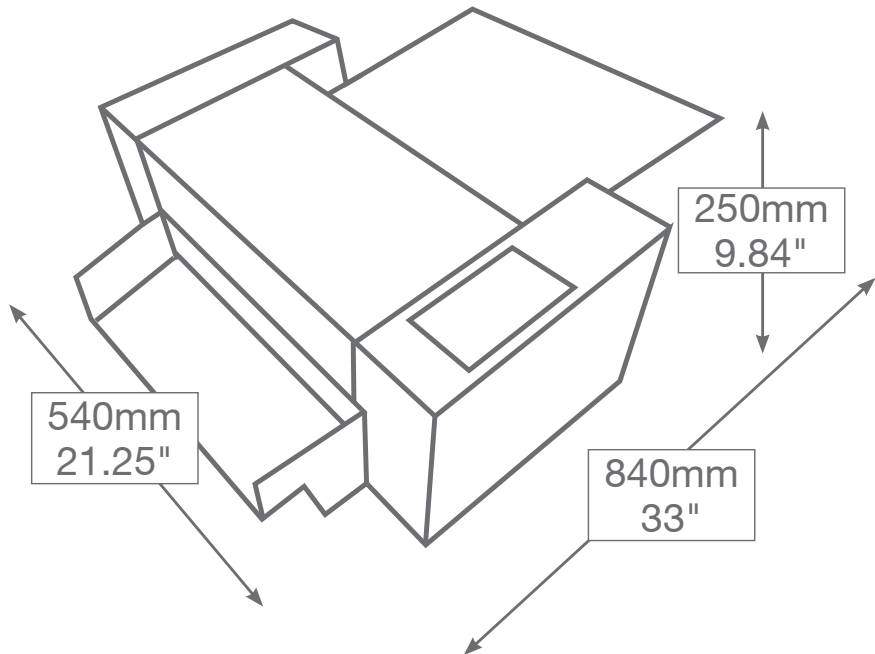


Picture 1-1 front view with feed tray



Picture1-2 back view with catch tray

3 Product Dimensions



Chapter Two

Machine specifications and contents

This chapter covers details about the BC480 card cutter and the standard items delivered with it.

1 . Machine Summary

1-1 Main purpose for usage

The cutting of pre-printed business cards, postcards, inserts and greetings cards to pre-set and custom specified sizes.

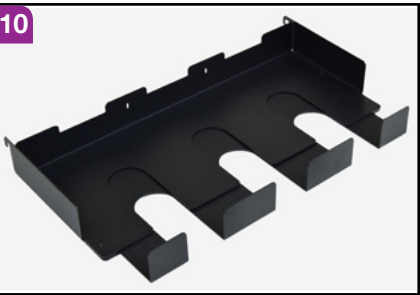
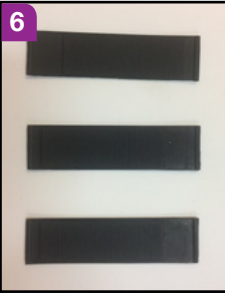
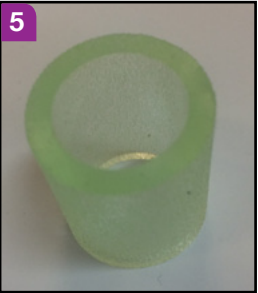
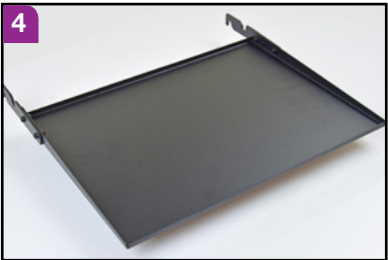
1-2. Machine Specifications

Cutting methods	Longitudinal cutter (cutting cassette): cut by roll cutter Horizontal (cross cutting knife): cut by a lateral long cutter
Paper feeding methods	Dual rolling auto-paper feeding
paper size	A3+(320×480mm); SRA3(320×450mm); A3(297×420mm) Custom - Use for American size papers
Paper thickness	0.25mm(180g/m²) - 0.35mm(350g/m²) Plain good quality paper
Cutting speed	250pcs / 96 seconds for 85x55mm card from SRA3 sheets
Cutting sizes	Longitudinal: (85/89/90/95) mm Horizontal: (50/54)mm or 1 to 600mm adjustable
Paper capacity	Max.12pcs card (0.35mm thickness) or a total thickness of 3mm
Name card capacity	180g/m² 90×2 (pcs) 350g/m² 70×2(pcs)
Dimensions (w×l×h)	540mm (21.25") × 840mm (33") × 250mm (9.84")
Operating temperature	-15° ~ +40° / humidity 35% ~ 70%
Weight	15Kgs
Power supply	AC 110~220V / 150w / 50/60HZ / 0.5A

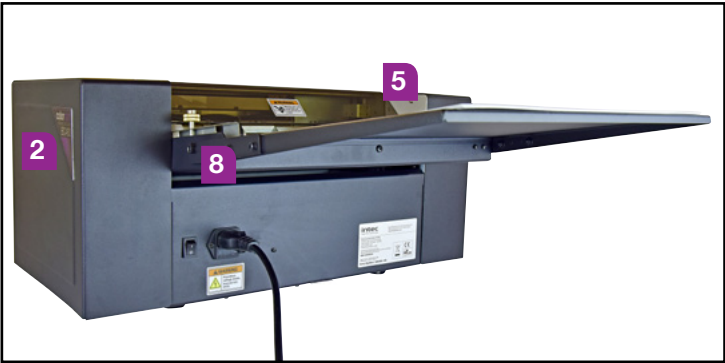
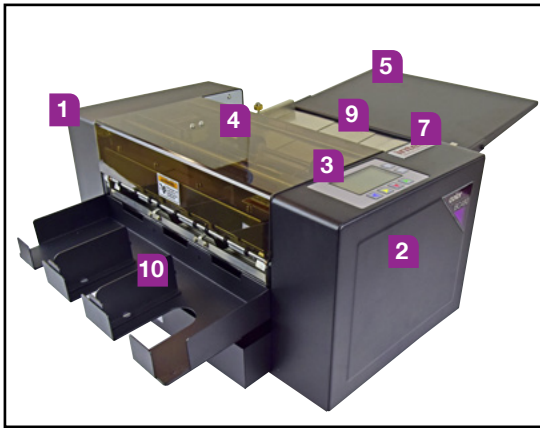
1-3 Accessories

The below accessories are included in the box with the BC480 card cutter. Please check that you have received all items listed. If anything is missing please inform your supplier immediately.

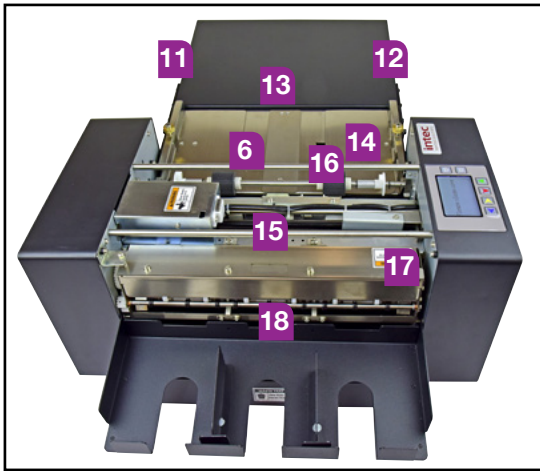
No.	Description	Qty	Notes
1	User manual	1	Printed booklet
2	Template download card	1	Details download location
3	Collection tray dividers	2	Magnetic dividers
4	Feed tray	1	Feed tray hooks onto rear
5	Paper feed ring	1	Clear rubber ring
6	Feed roller rubbers	3	Flat, black grooved rubbers
7	Blade sharpening stone	1	Fragile - take care
8	Mains power cable	1	Country specific
9	Waste Paper Collection Bin	1	Removal waste paper collector
10	Collection Tray	1	Hooks onto rear of cutter



1-4 Description of machine parts



- 1. Rear side cover
- 2. Front side cover
- 3. Operating panel
- 4. Safety cover
- 5. Paper feed tray
- 6. Double paper feed ring
- 7. Start button
- 8. Power cord
- 9. Paper thickness adjustable indicator
- 10. Waste paper collection tray



- 11. Left paper feed panel - adjustable
- 12. Right paper feed panel - adjustable
- 13. MARK sensor arrow for positioning
- 14. Paper feed rollers
- 15. Longitudinal knife - interchangeable cassettes - sizes; 85mm (3.34"), 89mm (3.5"), 90mm (3.54") and 95mm (3.74")
- 16. Crosscutting knife
- 17. Anti-static fur
- 18. Card collection tray

Chapter Three

Set up - Operating, maintenance and troubleshooting

This chapter details operating methods and any required maintenance of the BC480.

1. Set up

1-1 Setting up methods and procedures



Attention

The BC480 is 15kgs in weight. This can be lifted from its box by one person however, it is advised that it should be lifted from its box by 2 people.

Remove the BC480 as specified below:
Open the box and remove the top cardboard and foam packing as shown below.



Place you hands either side of the white foam inserts, these should be lifted out with the unit and remove the unit placing it on a stable surface. Picture 1.



Picture 1



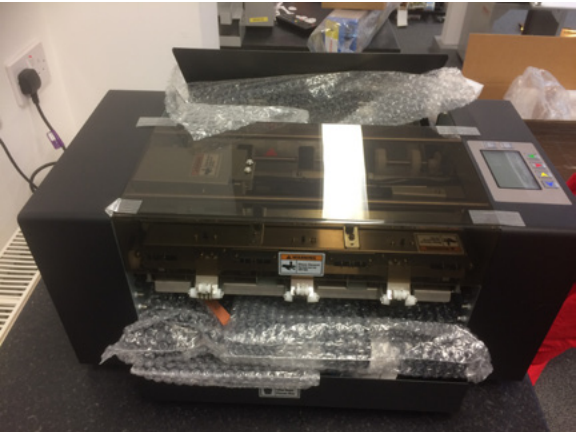
Picture 2



Picture 3

Once out of the box and placed on a stable surface, carefully, and whilst supporting the machine remove the white foam ends and outer plastic bag. Picture 2 and 3.

Once in place and on a stable surface check contents.



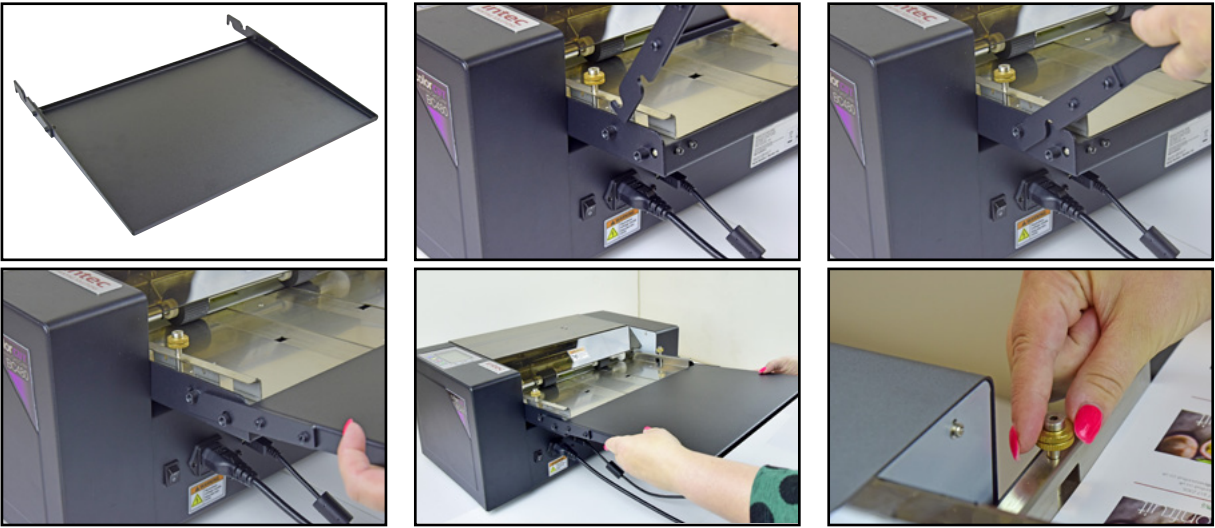
The machine contains wrapped items, as listed in Chapter 2. 1-3 Accessories section, in the waste tray.

Remove all the items and check all the contents are there.

Once you have confirmed that all the items are received please put the BC480 together as follows:

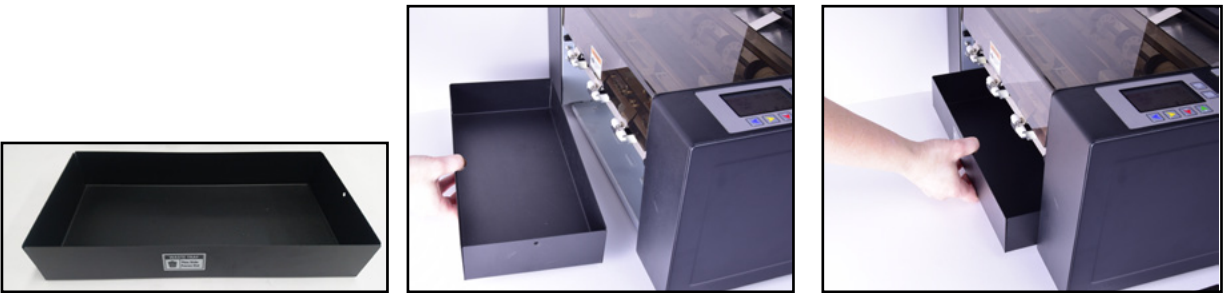
1-2 Paper Feed Tray

Find the paper feed tray and hook onto the holding pins. The tray has adjustable feed guides that can be secured in place by tightening the screws on either side of the tray - ensure these are closed up to your paper edges but not too tight!



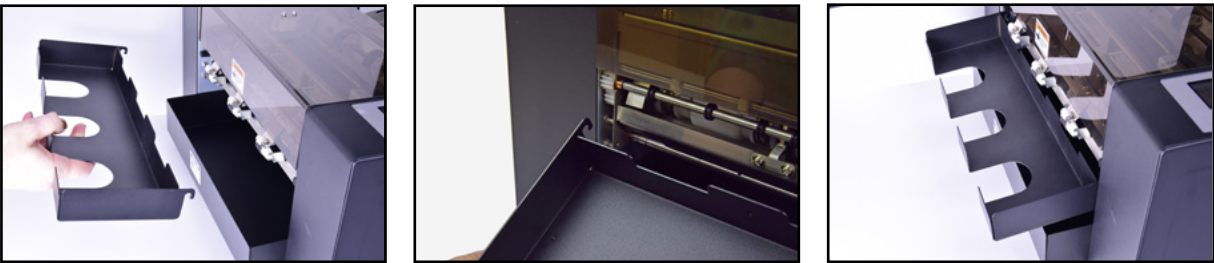
1-3 Waste Paper Tray

Install the waste paper tray in the back of the machine, making sure tray is fully inserted into the aperture.



1-4 Card Collection Tray

Install the card collection tray onto the holders for this:




After the card collection tray has been secured in place, add the card dividers - these are magnetic and adjustable.




1-5 Mains Power

Now put your mains power cable in its input socket and plug into a mains power source.



 Attention: Make sure the main covers magnetic interlock switch is fully connected
In order to remove the static charge must be grounded.

 Attention: In case of electric leakage, be careful electric shock
Make sure power switch be turned on.

1-6 Placement of machine for operation

Please use the machine in the following places:

- On a stable surface
- In a well-ventilate area
- Ensure area around the machine is free from debris

The machine is made of precision machinery and electronic components and therefore needs to be located in a suitable place for use.

Please avoid the following locations:

- Direct sunlight
- Areas of high humidity
- Keep away from sources of ignition
- Places that can become prone to moisture

- Close to heating and cooling sources
- Vibration of work surface



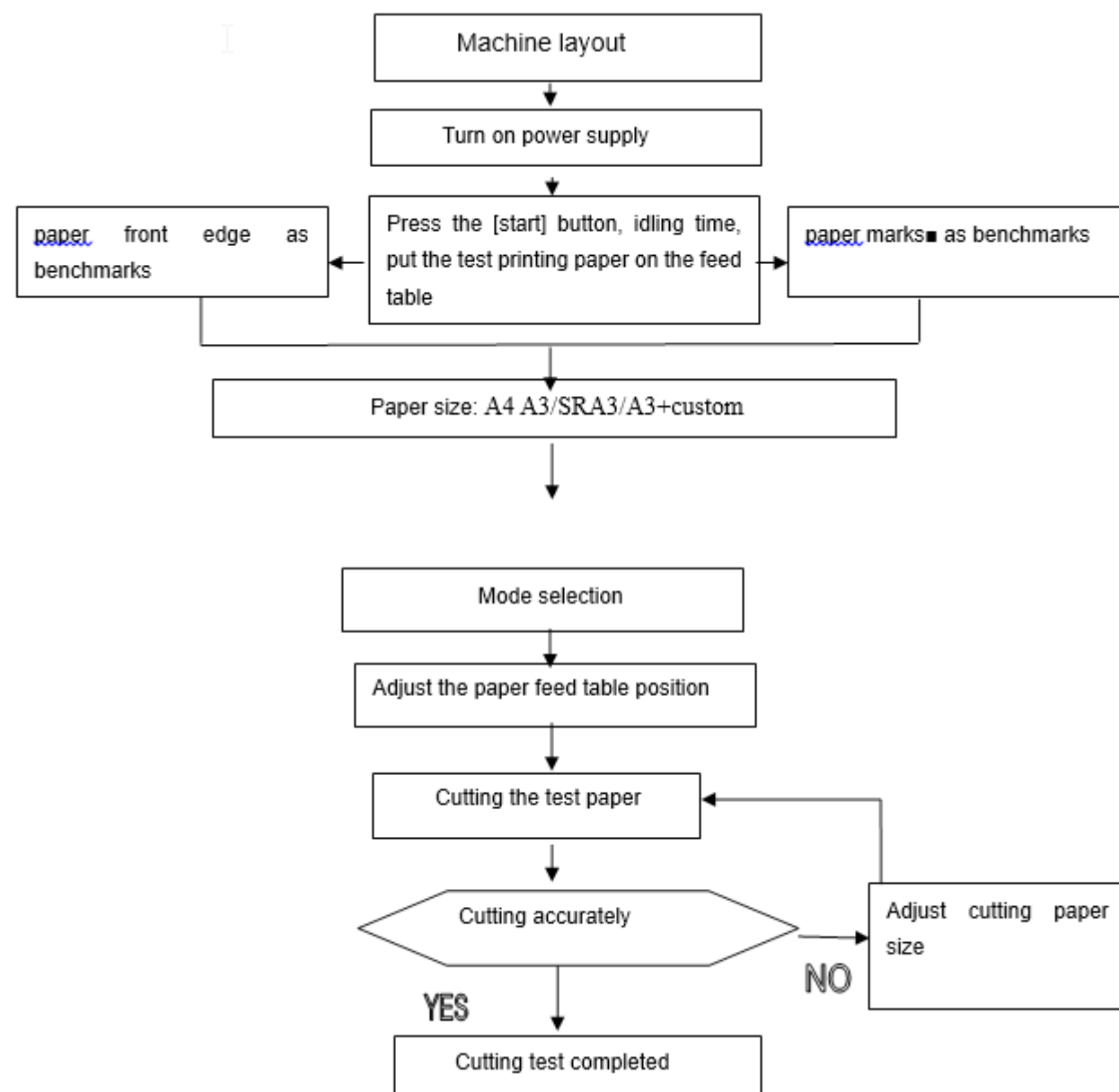
Attention

- Don't put any other electrical plug, other than what has been provided, into electrical outlet
- Prone to static - you should use static shield and humidifier
- Don't put the machine on a table that is smaller than its footprint

2. Operation

2-1 Cutting workflow

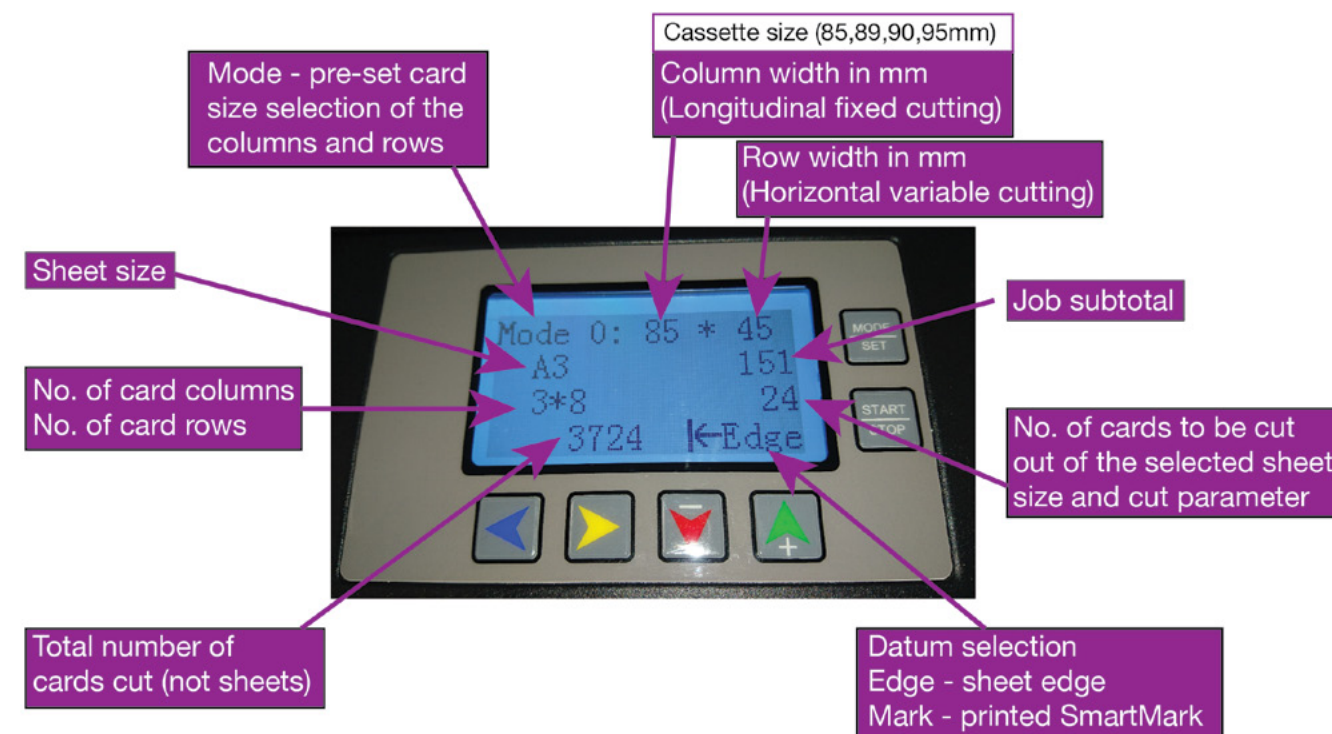
This flowchart shows you the process for machine usage.



2-2 Operation panel description

LCD display description

Initial understanding of the LCD panel is important. Please take a little time to navigate yourself through the buttons and display before completing any work.



When the BC480 is turned on it will go into the last mode used.

With the BC480 turned on and in standby press the **MODE SET** button. This will change your cutting Mode number (0-9). The cutting mode is the preset COLUMN width size in mm and is defined by the cassette delivered with the BC480 and ROW length - this figure is variable and dependant on the card size you would like to cut.

Press this button to understand how the modes change and watch the card sizes change - this does not change your sheet / paper size. The modes are explained in Section 2-4.

After pressing through the modes now press the **MODE SET** for 3 seconds. This will take you into the setup menu as shown below:



DO NOT make any changes here yet - this will be explained later in the chapter.

When in this menu these are the options available:

Card option

Allows you to make changes to the card preset mode (A3, A3+, SRA3) you have selected:

- First cutting compensation
- Mark position compensation
- Card length compensation
- Groove width compensation

Note: If you are in CUSTOM mode you will also so these options:

- Card width
- Card length
- Card rows
- Card columns
- First cutting length
- Mark position length
- Groove width
- First cutting compensation
- Mark position compensation
- Card length compensation
- Groove width compensation

Note: This is an individual card changes only. The Card Option menu DOES NOT make a universal change to all set ups.

System option - See Section 2-5-5

Allows you to make changes to the universal set up of the BC480. This will make adjustment to all the set ups universally and these include:




- System speed - from 1 to 9 but we advise you do not set this to more than 8 as it can have a detrimental affect on your settings. The default setting is 6.
- System accuracy compensation
- Five column blade (longitudinal) width - for 5 card cassette
- Three column blade (longitudinal) width - for 3 card cassette
- First cutting compensation
- Mark position compensation
- Groove width compensation
- Last card compensation
- Penultimate card compensation
- Third from last card compensation
- Subtotal clear
- Restore factory settings
- Firmware version



Manual operate

This allows you to manually operate the BC480 - use the arrows to move the paper forwards, backwards and up and down. You can use this mode when you have a paper jam.

Language

This allows you to select either English or Chinese.

To navigate through the 4 options shown above use the  and  arrows. Once you have selected the menu the you would like make changes in press the  and this will take you to


the sub menus associated with the main menus (card option, System option, Manual operate, Language). To come out of the sub menus and back to this main window press the  button again and then press the  for 3 seconds to return you to standby mode.

Test your cutting mode with a sheet of paper/card

Now take some paper/card and place this in the feed tray.

Note: You can place up to 3mm stack height in the BC480 feed tray (approximately 10 sheets of 250gsm Mondi ColorCopy paper)


Press the  button until you see Edge on the LCD panel.

Once in position press the  button. This will cut a sheet using the mode you have selected on the LCD panel.

We will continue to look at the LCD screen description.


To change your sheet / paper size press the  arrow. This will take you through the sheet size options available to you.

- A3 (297mm x 420mm)
- A3+ (320x480mm)
- SRA3 (320 x 450mm)
- A4 (only available in selected territories - do not use)
- CUSTOM (set for American paper sizes if purchased in America only)



Now press the  button and this will now provide you with your Datum selection - explained in section 2-3.



Number of cards to be cut

Take a look at your initial Mode selection and this will tell you how many cards are to be cut from the sheet size and mode you have selected.

By pressing the  and  button you can set the amount of cards to be cut.

Note: The Mode you have showing will determine how many cards will be cut from a sheet of paper.

By continuing to press the  button you will incrementally increase the number of cards to be cut, up to a maximum of 10 and then the system takes you to AUTO mode. To reduce the number of cards to be cut press the  button.


EXAMPLE: If you have 3 sheets of 24 cards to cut press the  twice and it will show 72. This is the amount of cards to be cut from 3 sheets of paper. Place 3 sheets in the feed tray and press the  button. The BC480 will cut the 3 sheets and stop after this action.


AUTO - If you leave the BC480 in AUTO it will continue to cut sheets until there are no more sheets in the tray to feed. The BC480 will try to take sheets for another 2 seconds and will then stop.

(2) LCD display description
Turn on power supply. The BC480 will initialize and go into standby mode - the LCD display will show the default mode selection - be sure to change your mode and paper size settings to your desired card cutting options.

2-3 Datum selection



There are two ways of cutting sheets; using the EDGE of the sheet of paper as your initial guide point or using a printed ‘MARK’ that the internal mark sensor will read to position its cuts.
Note: The ‘MARK’ option is particularly useful when printing with a digital printing press or copier because it allows for any sheet printing adjustments.

On the control panel the ‘Datum Selection’ can be selected by pressing the  button to choose which option you would like to use.

 **Edge** Edge: cutting from the front of the sheet as a benchmark

 **Mark** Mark: using a printed ‘MARK’ to position the cuts on sheet

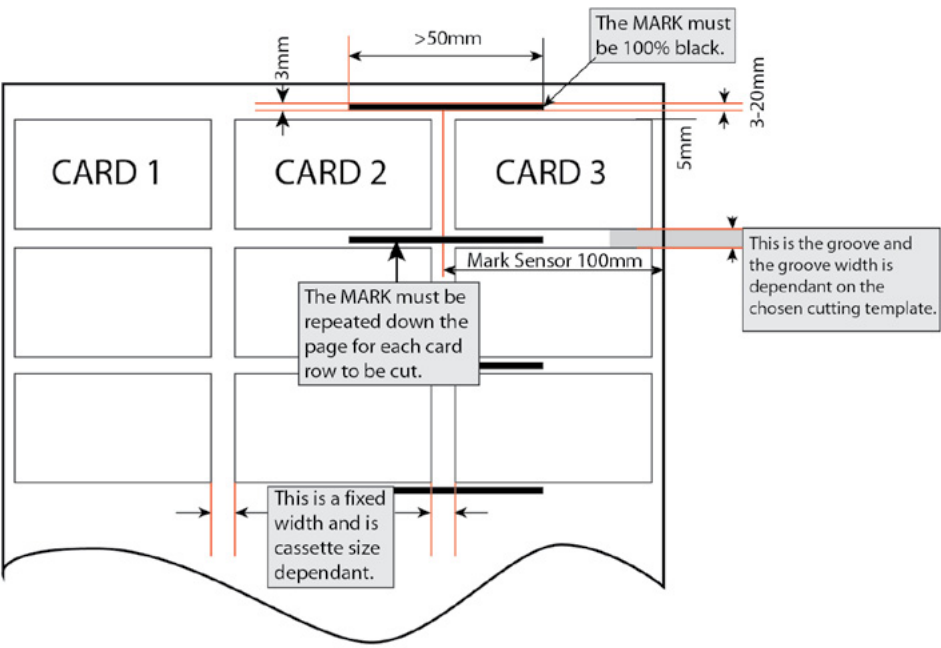
The machine has preset cutting parameters and will always default to EDGE unless you are using the CUSTOM mode and some of the CUSTOM modes have ‘MARK’ detection set as a default - see section 2-4 Cutting modes.

 Please be sure to note what Datum option you are using before you press the  button to cut your sheets.

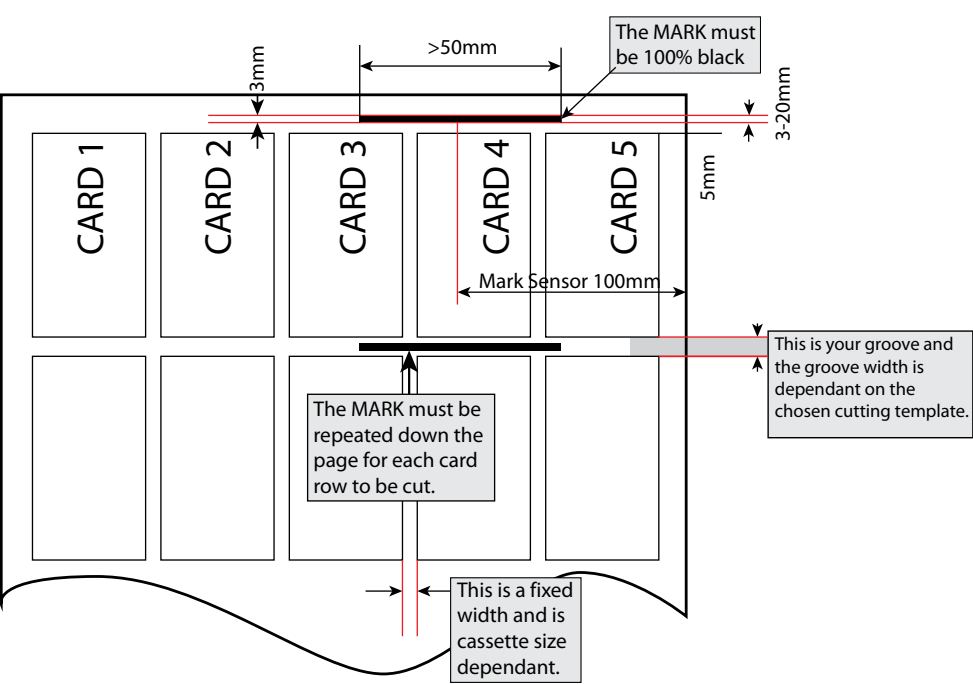
Note: As you scroll through the modes you will need to ensure that you check which datum option is selected for a particular preset.

2-3-1 ‘MARK’ printing set up

This is the template set up if you are using A3 paper and have a 3 column cassette:



This is the template set up if you have A3 paper and a 5 column cassette:



The ‘MARK’ on the templates provided are designed to work with the set ups as described in the manual and those available for download from the Intec website.

If you are creating your own templates be sure to note where the ‘MARK’ falls in relation to the sensor arrow marks for your chosen cutting cassette on the feed table and in relation to how you have the paper feed guides set.



2-4 Cutting modes

2-4-1 Selection of rotary knife cassette (longitudinal knife)

85mm cassette - 3 column cutting widths 85mm - delivered as standard for EMEA countries

89mm cassette - 3 column cutting width 89mm - delivered as standard for the Americas

90mm cassette - 3 column cutting width 90mm - special order

90mm cassette - 3 column cutting width 95mm - special order

55mm cassette - 5 column cutting width 55mm - only available in selected territories

54mm cassette - 5 column cutting width 54mm - only available in selected territories

Indentation cassette - only available selected territories

Perforation cassette - only available selected territories

If you require anything different from the standard cassette provided with the machine, please specify this at time of order.

2-4-2 Cutting modes - paper sizes

(1) Paper size: A3+ (320×480mm)

Mode 0: 89x45mm; select 89mm cassette - 3 columns and 9 rows - total 27 cards

Mode 1: 89x50mm; select 89mm cassette - 3 columns and 8 rows - total 24 cards

Mode 2: 89x54mm; select 89mm cassette - 3 columns and 8 rows - total 24 cards

Mode 3: 89x90mm; select 89mm cassette - 3 columns and 5 rows - total 15 cards

Mode 4: 55x85mm; select 55mm cassette - 5 columns and 5 rows - total 25 cards

Mode 5: 55x89mm; select 55mm cassette - 5 columns and 5 rows - total 25 cards

Mode 6: 55x90mm; select 55mm cassette - 5 columns and 5 rows - total 25 cards

Note: These are default presets out of the box. If you have a different cassette size you can change these presets to suit the cassette size you are using. Please see section 2.5 to do this.

(2) Paper size: SRA3 (320×450mm)

Mode 0: 89x45mm; select 89mm cassette - 3 columns and 8 rows total - 24 cards

Mode 1: 89x50mm; select 89mm cassette - 3 columns and 7 rows - total 21 cards

Mode 2: 89x54mm; select 89mm cassette - 3 columns and 7 rows - total 21 cards

Mode 3: 89x90mm; select 89mm cassette - 3 columns and 4 rows - total 12 cards

Mode 4: 89x95mm; select 89mm cassette - 3 columns and 4 rows - total 12 cards

Mode 5: 89x127mm; select 89mm cassette - 3 columns and 3 rows - total 9 cards

Note: These are default presets out of the box. If you have a different cassette size you can change these presets to suit the cassette size you are using. Please see section 2.5 to do this.

(3) Paper size: A3 (297×420mm)

Mode 0: 89x45mm; select 89mm cassette - 3 columns 8 rows total 24pcs cards

Mode 1: 89x50mm; select 89mm cassette - 3 columns 7 rows total 21pcs cards

Mode 2: 89x54mm; select 89mm cassette - 3 columns 7 rows total 21pcs cards

Mode 3: 89x90mm; select 89mm cassette - 3 columns 4 rows total 12pcs cards

Mode 4: 89x95mm; select 89mm cassette - 3 columns 4 rows total 12pcs cards

Mode 5: 89x127mm; select 89mm cassette - 3 columns 3 rows total 9pcs cards

Note: These are default presets out of the box. If you have a different cassette size you can change these presets to suit the cassette size you are using. Please see section 2.5 to do this.

(4) Paper size: CUSTOM - use for American paper sizes 12"x17" and 12"x18"

Mode 0: CUSTOM (EDGE detection set as default)

Note for USA users: Preset - 12"x17" for 3.5" x 2" cards and no groove, so only to be used with non-bleed. See templates provided.

Mode 1: CUSTOM (EDGE detection set as default)

Note for USA users: Preset - 12"x18" for 3.5" x 2" cards and can be used for non-bleed and cards with bleed. See templates provided.

Mode 2: CUSTOM (EDGE detection set as default)

Note for USA users: Preset - 12"x18" for 3.5" x 5" cards and can be used for non-bleed and cards with bleed. See templates provided.

Mode 3: CUSTOM (EDGE detection set as default)

Note for USA users: Preset - 12"x18" for 3.5" x 8" cards and can be used for non-bleed and cards with bleed. See templates provided.

Mode 4: CUSTOM (MARK detection set as default)

Note for USA users: Preset - 12"x18" for 3.5" x 8.5" cards and can be used for non-bleed and cards with bleed. ALSO this preset on the unit defaults to MARK datum detection all the time, so you have to be change to EDGE before you cut. Press the yellow arrow to change the datum selection. See templates provided.

Mode 5: CUSTOM (MARK detection set as default)

Note for USA users: Preset - 12"x18" for 3.5" x 2" cards and can be used for non-bleed and cards with bleed.

Mode 6: CUSTOM (MARK detection set as default)

Note for USA users: Preset - 12"x18" for 3.5" x 5" cards and can be used for non-bleed and cards with bleed. See templates provided.

Mode 7: CUSTOM (MARK detection set as default)

Note for USA users: Preset - 12"x18" for 3.5" x 8" cards and can be used for non-bleed and cards with bleed. See templates provided.

Mode 8: CUSTOM (MARK detection set as default)

Note for USA users: Preset - 12"x18" for 3.5" x 8.5" cards and can be used for non-bleed and cards with bleed. See templates provided.

Mode 9: CUSTOM (MARK detection set as default)

Note: There are no presets for this mode - please use this option for testing purposes.

Note: These are default presets out of the box. If you have a different cassette size you can change these presets to suit the cassette size you are using. Please see section 2.5 to do this.

2-4-3 Cutting templates

Cutting templates for A3+, SRA3, A3 and CUSTOM sheet sizes can be found on the Intec website in our support and downloads section: <https://intecprinters.com/support-downloads/drivers-downloads/colorcut/>



This information has been provided on a template download card that is shipped with the BC480.

Technical drawing of a 3x10 grid of rectangles. The overall dimensions are 480mm (width) and 320mm (height). The grid consists of 3 rows and 10 columns of rectangles. The dimensions are as follows:

- Overall Dimensions:** 480mm (width) and 320mm (height).
- Column Spacing:** The first column has a width of 5mm. The subsequent 9 columns have a width of 6mm each.
- Row Spacing:** The first row has a height of 45mm. The subsequent 2 rows have a height of 85.89mm each.
- Rectangles:** There are 30 rectangles in total, arranged in 3 rows and 10 columns.
- Dimensions of the first rectangle (top-left):** 5mm (width) and 45mm (height).
- Dimensions of the first rectangle (bottom-left):** 5mm (width) and 85.89mm (height).
- Dimensions of the last rectangle (top-right):** 6mm (width) and 45mm (height).
- Dimensions of the last rectangle (bottom-right):** 6mm (width) and 85.89mm (height).

Technical drawing of a 3x8 grid of rectangles. The overall dimensions are 480mm (width) and 320mm (height). The grid consists of 3 rows and 8 columns of rectangles. The dimensions are as follows:

- Overall width: 480mm
- Overall height: 320mm
- Row 1 (top): 8 rectangles, each 50mm wide and 85.89mm high. Spacing between rectangles is 8mm. Spacing from the left edge is 5mm. Spacing from the right edge is 8mm.
- Row 2 (middle): 8 rectangles, each 50mm wide and 90.95mm high. Spacing between rectangles is 8mm. Spacing from the left edge is 5mm. Spacing from the right edge is 8mm.
- Row 3 (bottom): 8 rectangles, each 50mm wide and 95mm high. Spacing between rectangles is 8mm. Spacing from the left edge is 5mm. Spacing from the right edge is 8mm.

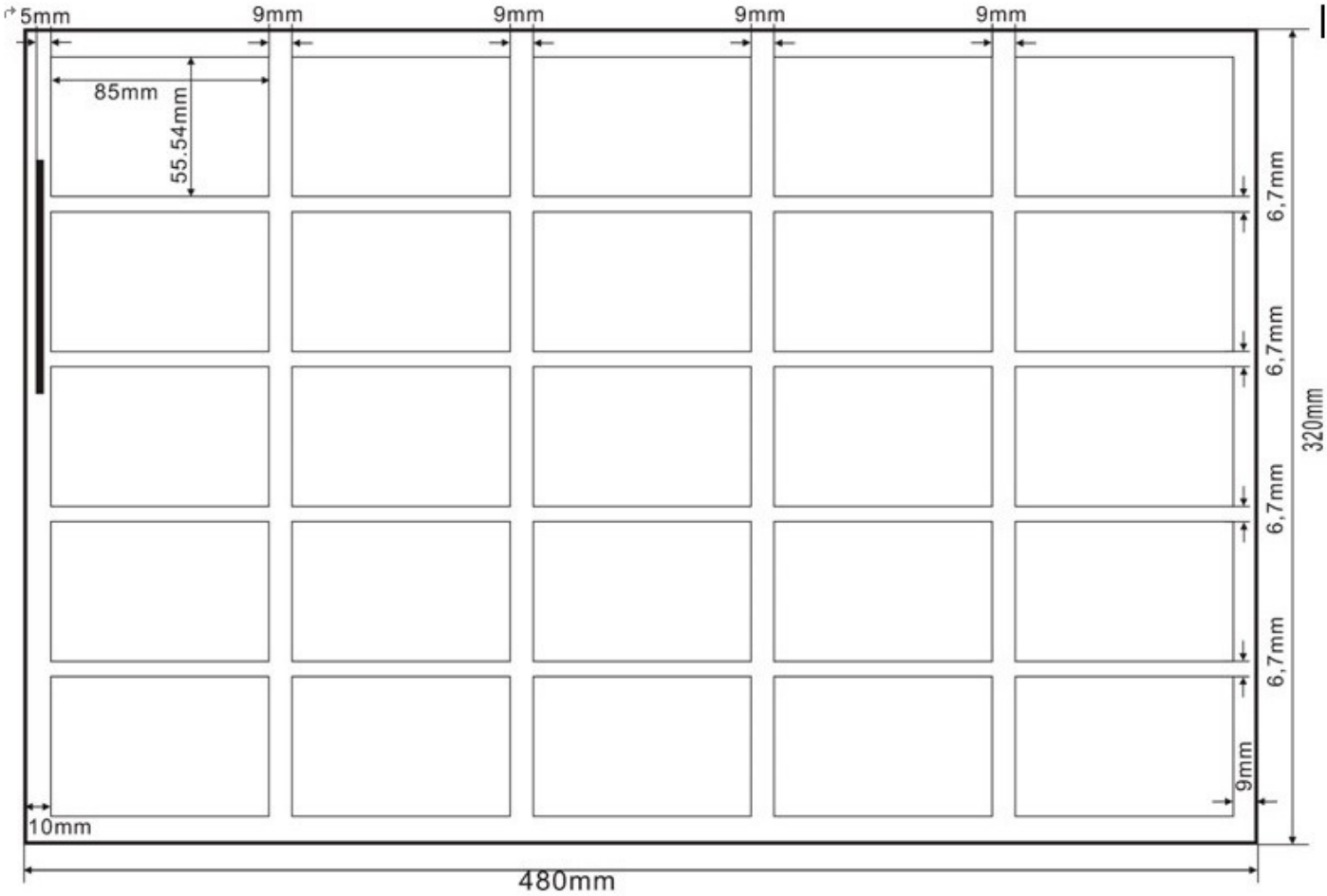
Technical drawing of a 3x8 grid of rectangular cells. The overall dimensions are 480mm in width and 320mm in height. The grid consists of 3 rows and 8 columns of cells. The dimensions of the cells and the spacing between them are as follows:

- Row 1 (Top):** The height of the cells is 85.89, 90, and 90.95mm. The width of the cells is 54mm. The spacing between the cells is 3mm.
- Row 2 (Middle):** The height of the cells is 10mm. The width of the cells is 54mm. The spacing between the cells is 3mm.
- Row 3 (Bottom):** The height of the cells is 10mm. The width of the cells is 54mm. The spacing between the cells is 3mm.

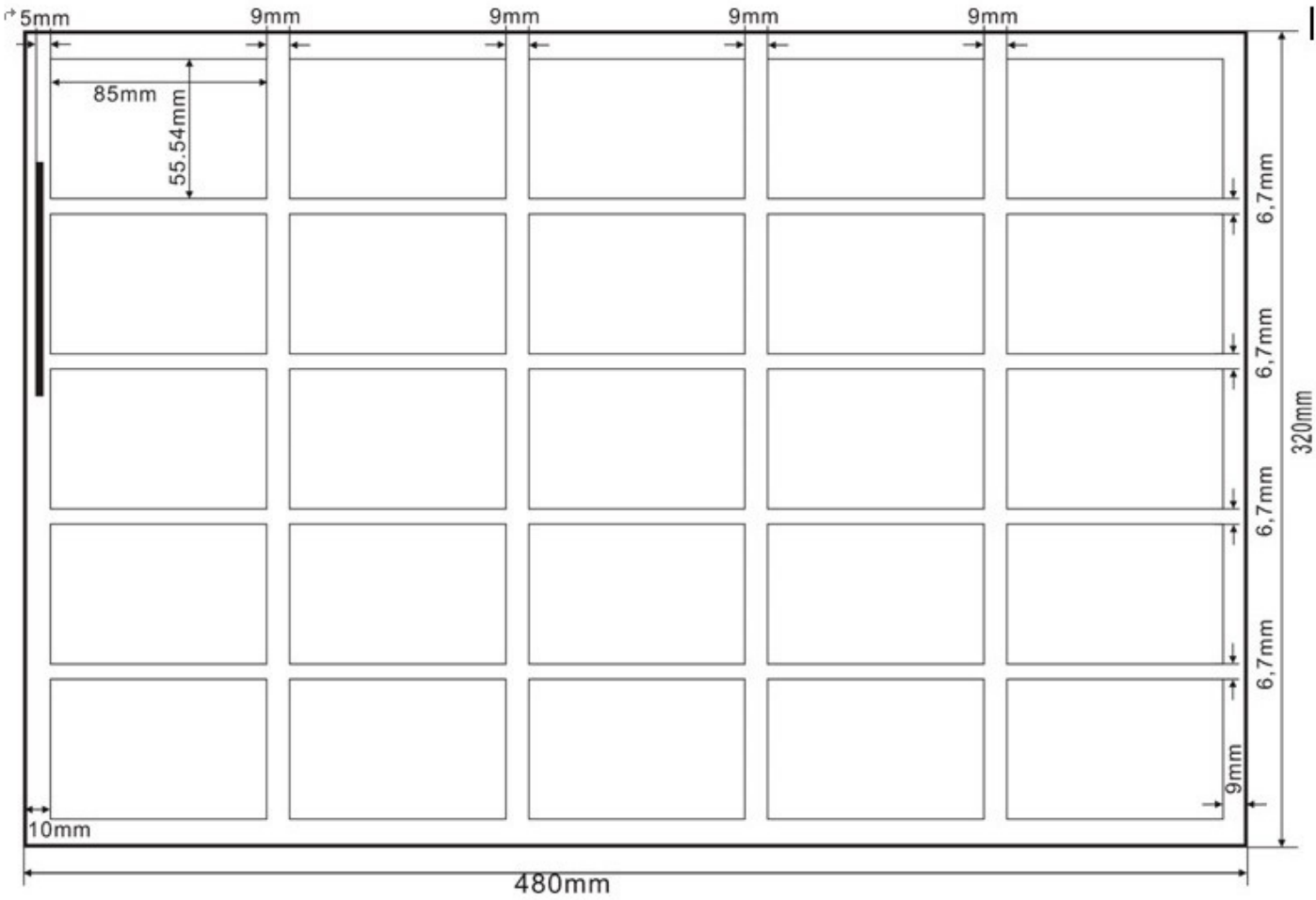
The overall width of the grid is 480mm, and the overall height is 320mm. The drawing includes a scale bar and a north arrow.

Technical drawing of a rectangular plate with dimensions and a grid pattern. The overall dimensions are 480mm in width and 320mm in height. The plate features a grid of 10 rectangular cells arranged in 2 rows and 5 columns. The grid is defined by lines with a thickness of 0.1mm. The spacing between the grid lines is 90mm horizontally and 85.89mm vertically. The plate has a 5mm wide top edge, a 10mm wide bottom edge, and a 10mm wide right edge. The left edge is marked with a 10mm dimension. The grid cells are labeled with their dimensions: 90mm x 85.89mm, 90mm x 90.95mm, 90mm x 90.95mm, 90mm x 90.95mm, and 90mm x 90.95mm.

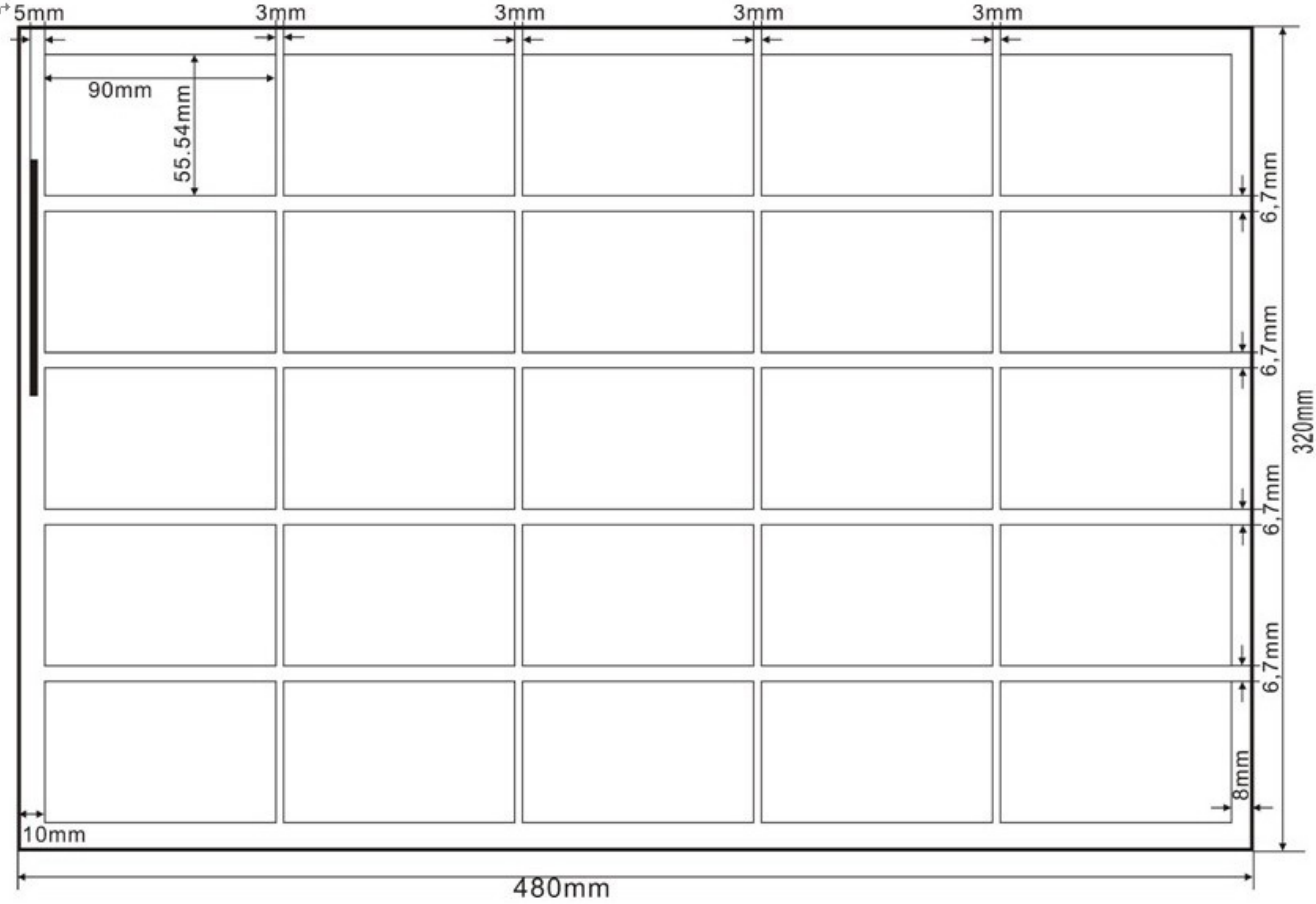
• A3+ MODE 4



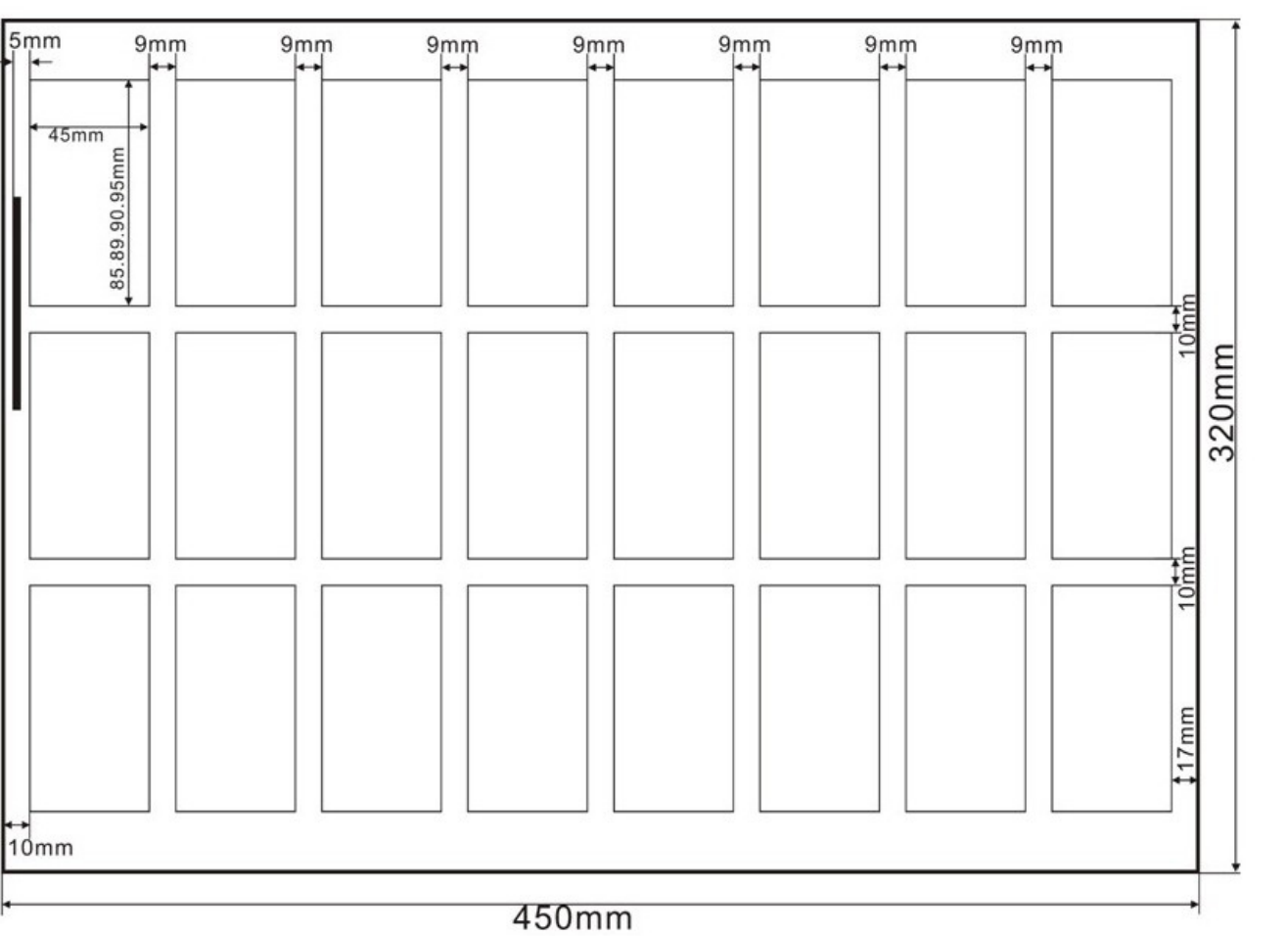
• A3+ MODE 5



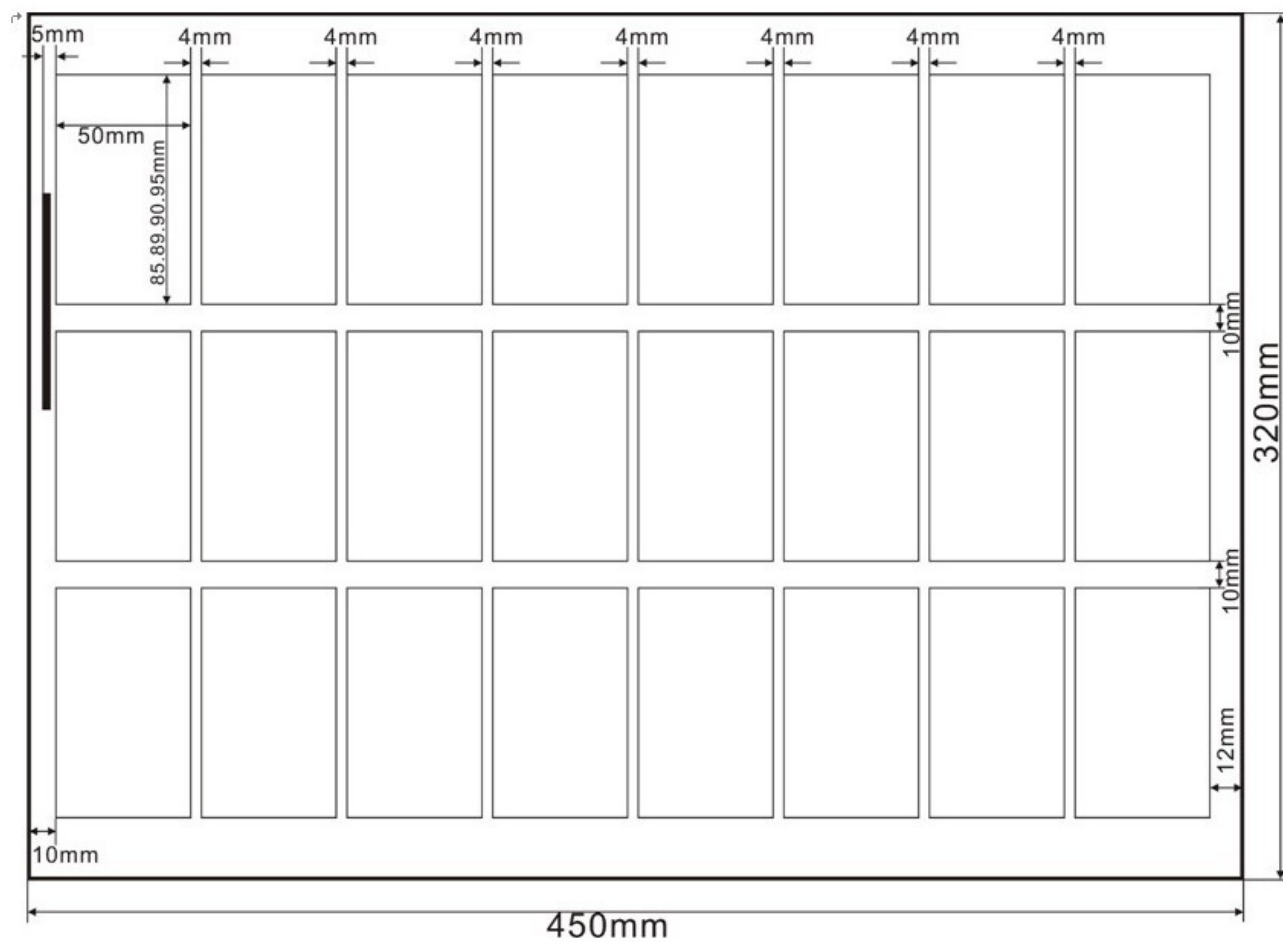
• A3+ MODE 6



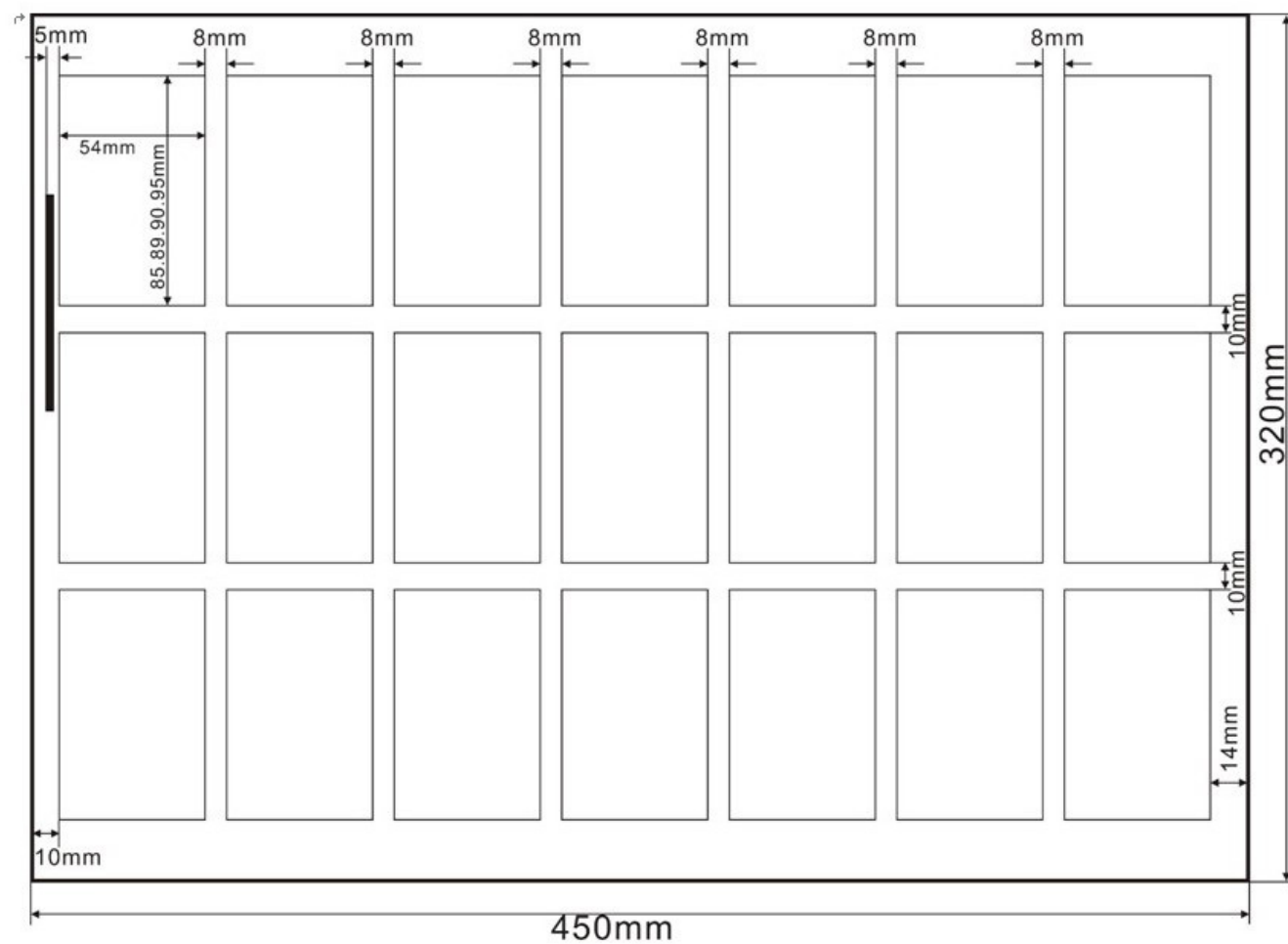
• SRA3 MODE 0



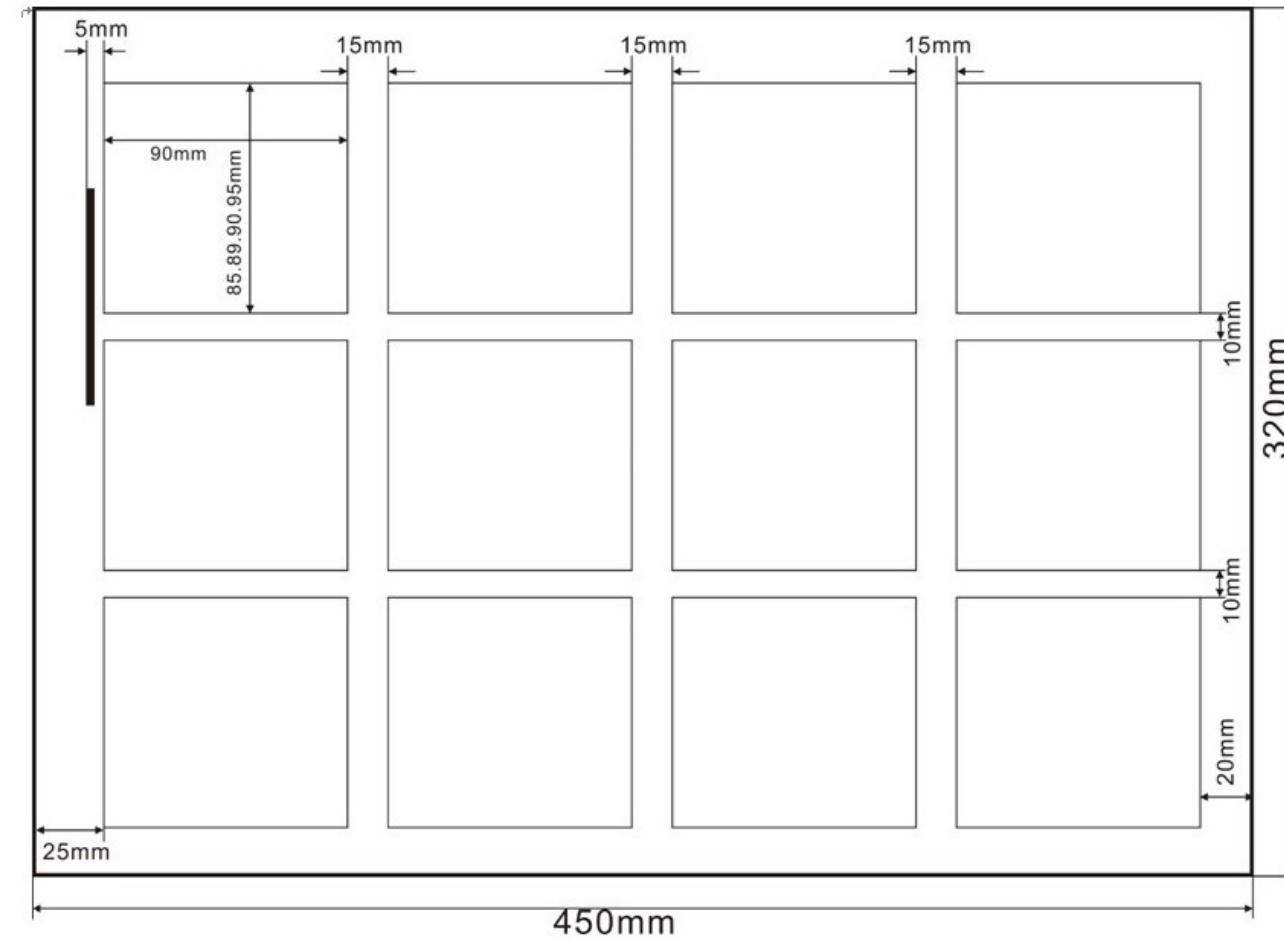
• SRA3 MODE 1



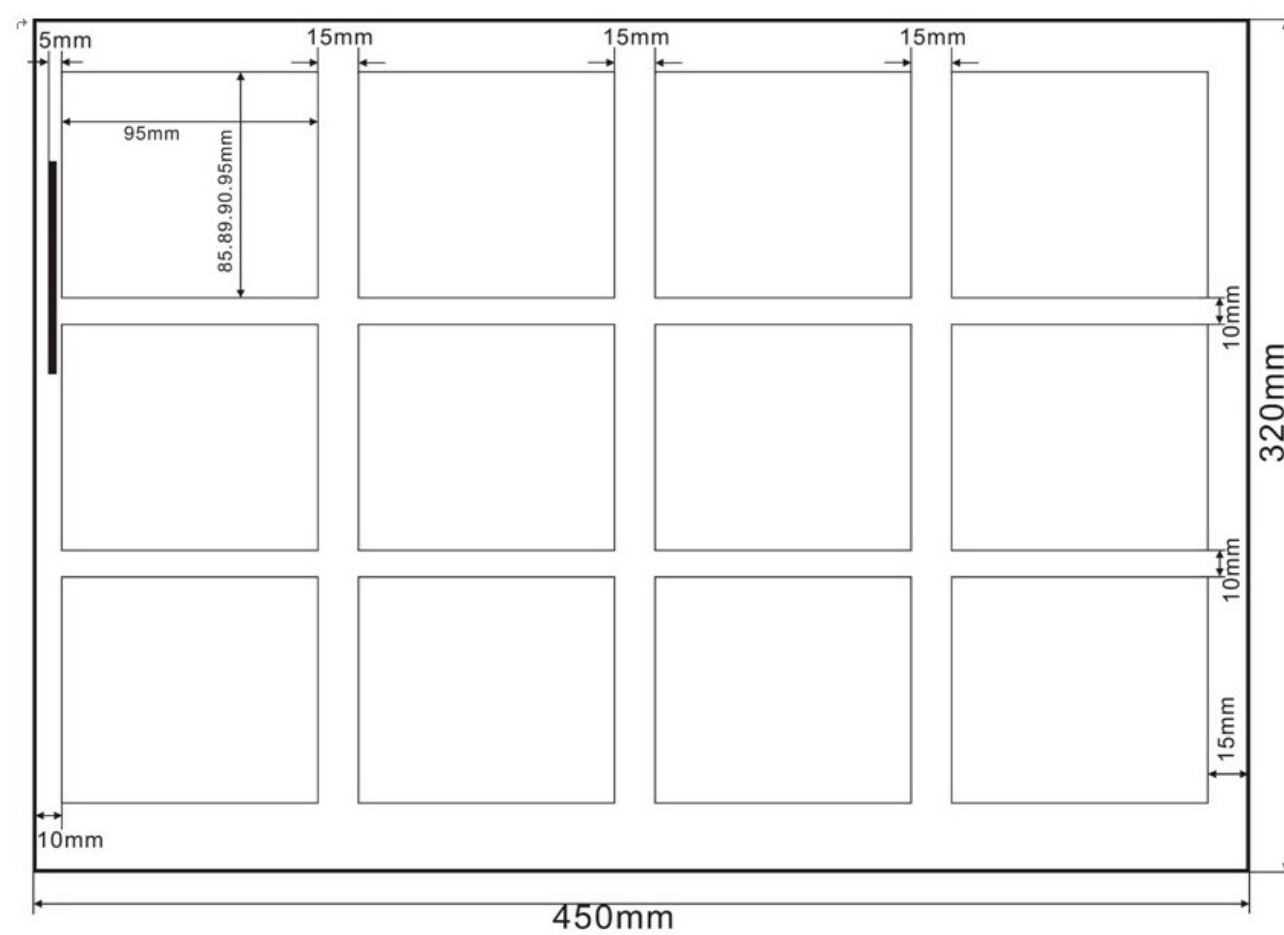
- SRA3 MODE 2



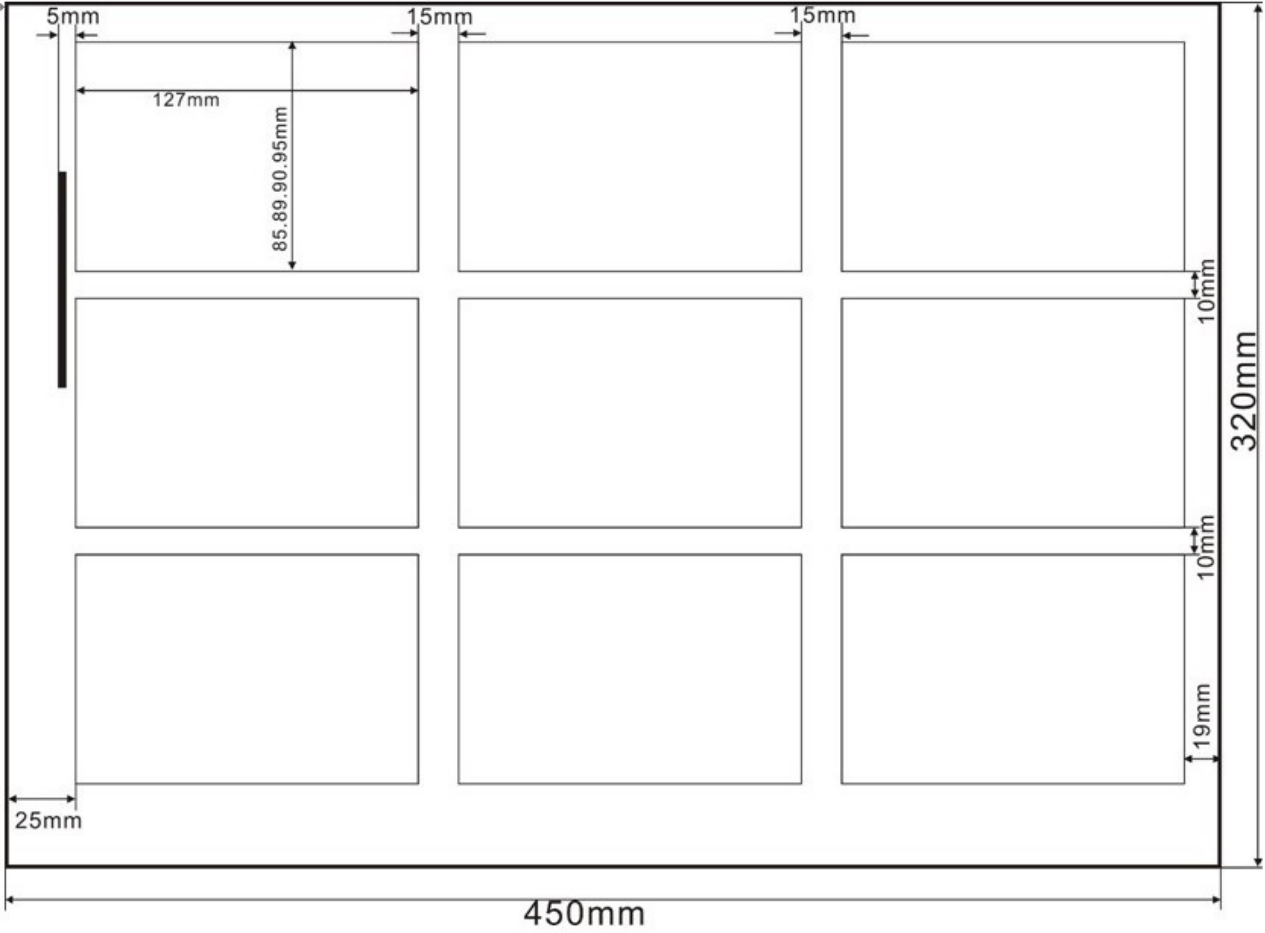
- SRA3 MODE 3



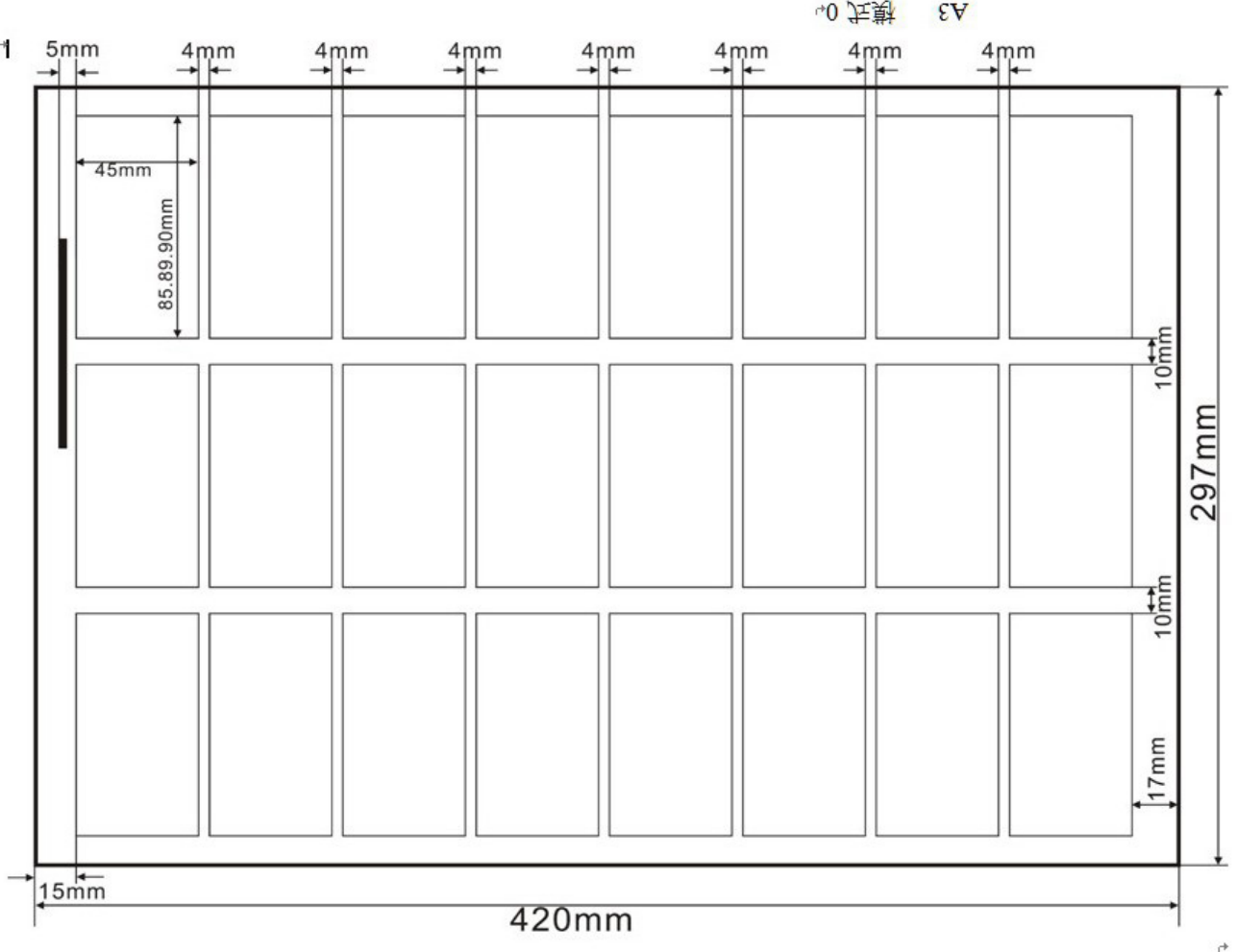
- SRA3 MODE 4



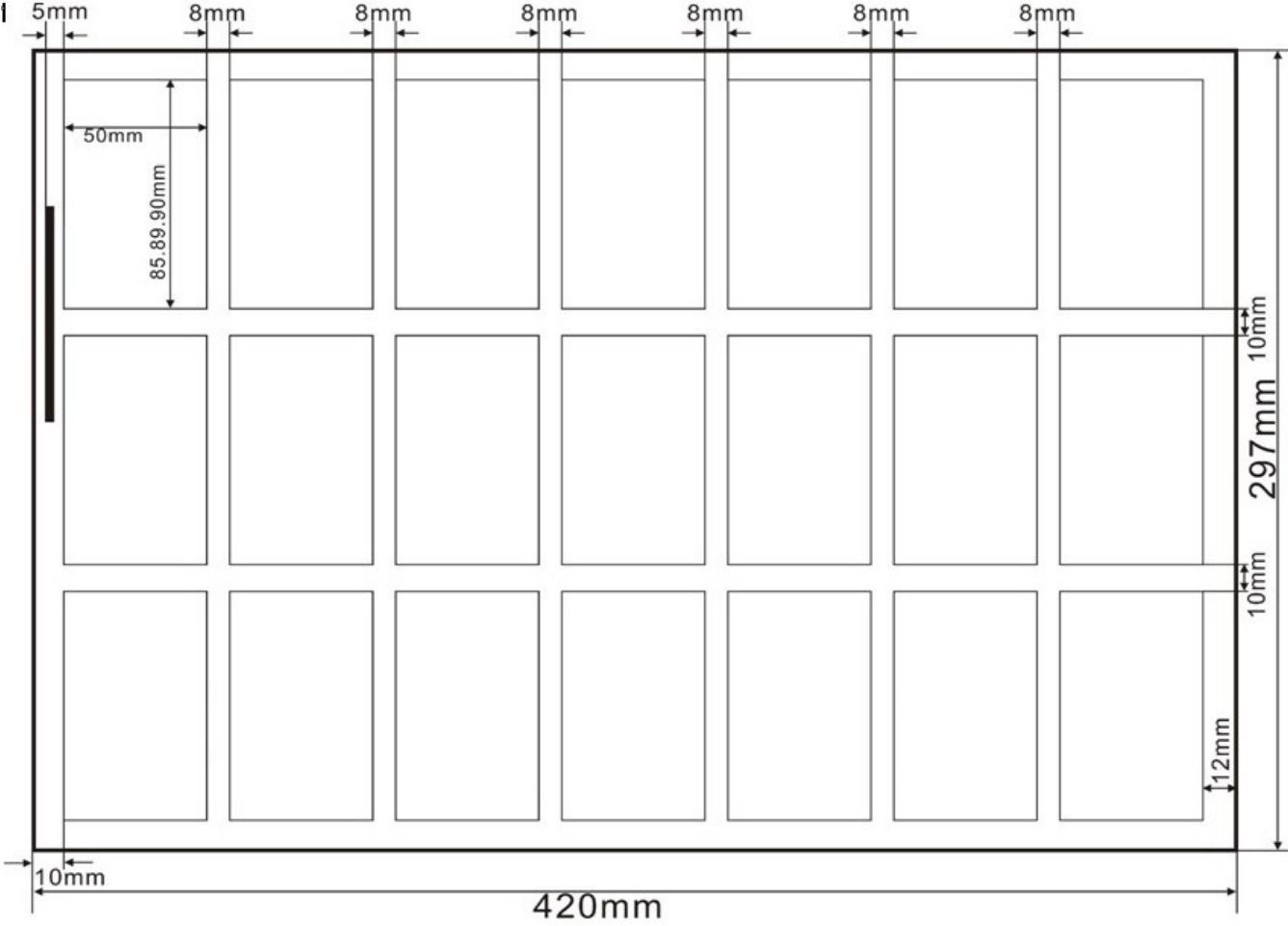
• SRA3 MODE 5



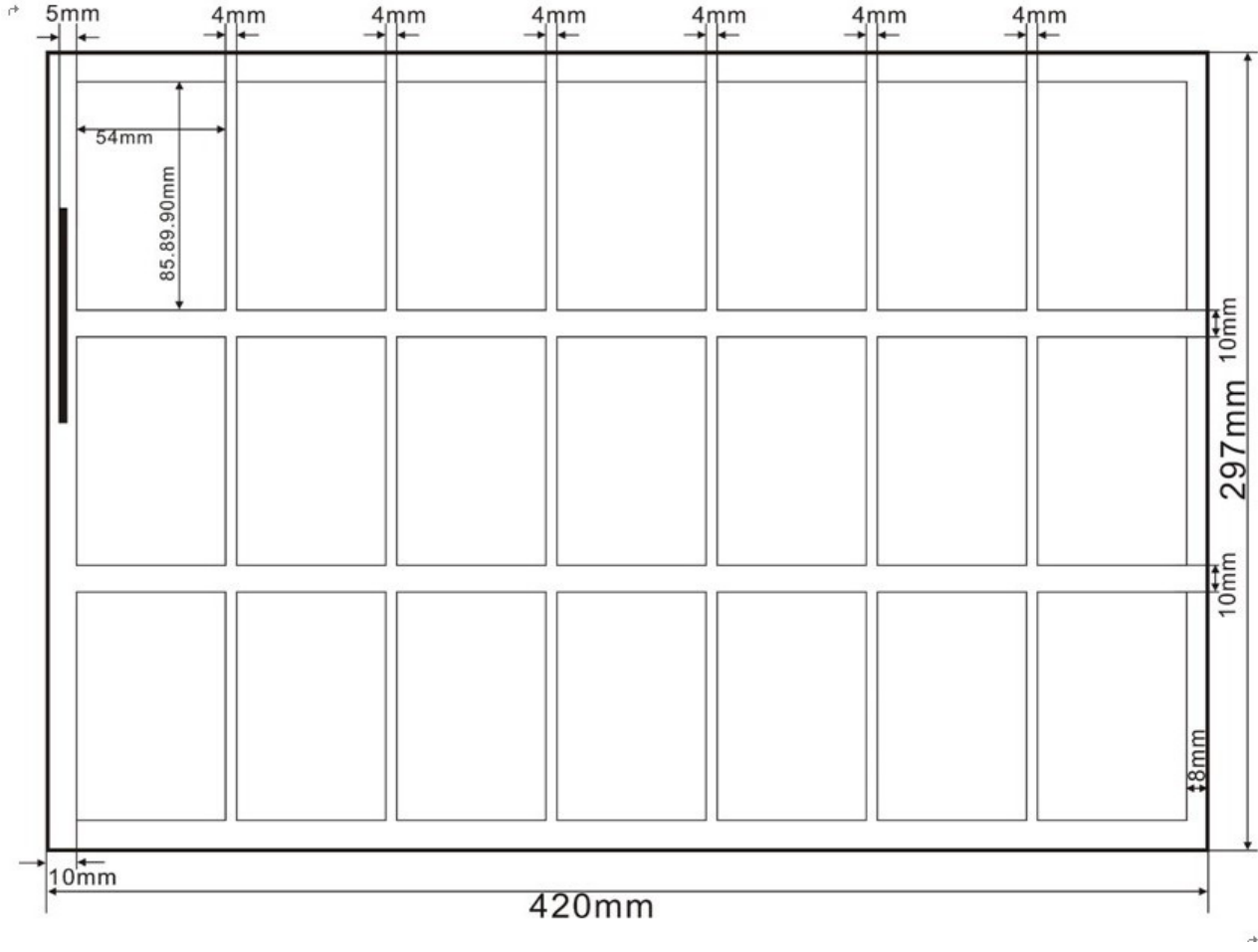
• A3 MODE 0



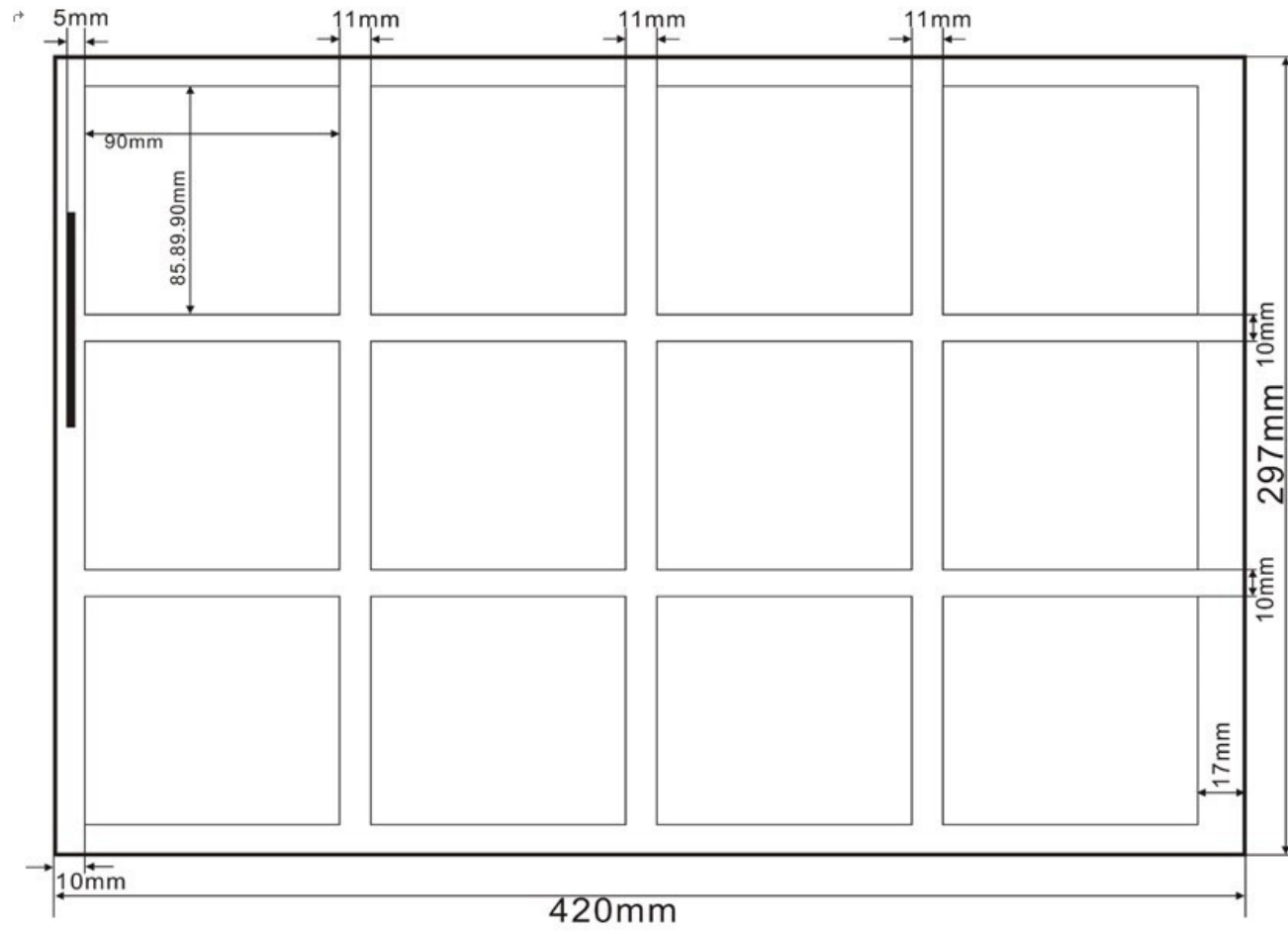
• A3 MODE 1



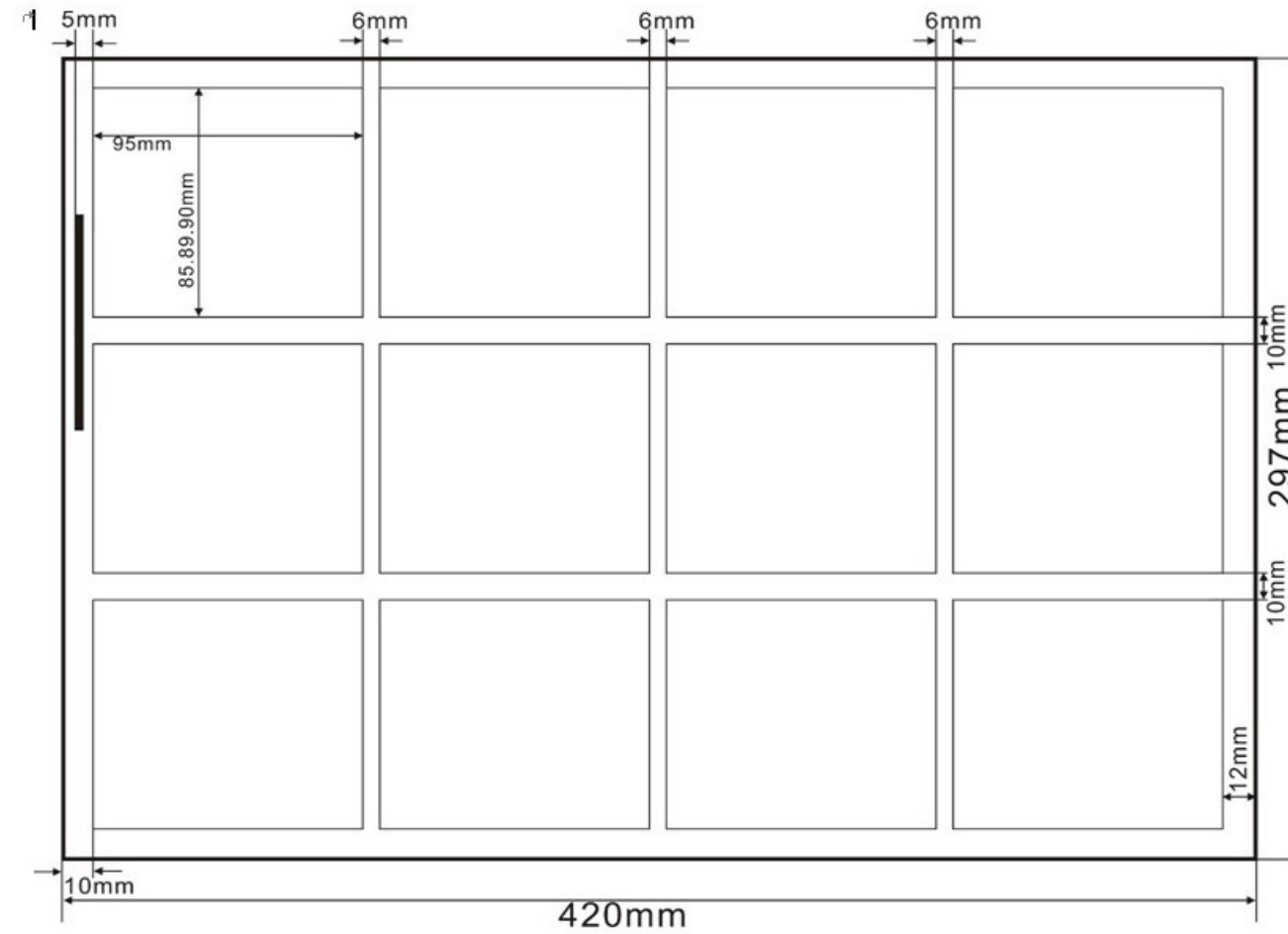
• A3 MODE 2



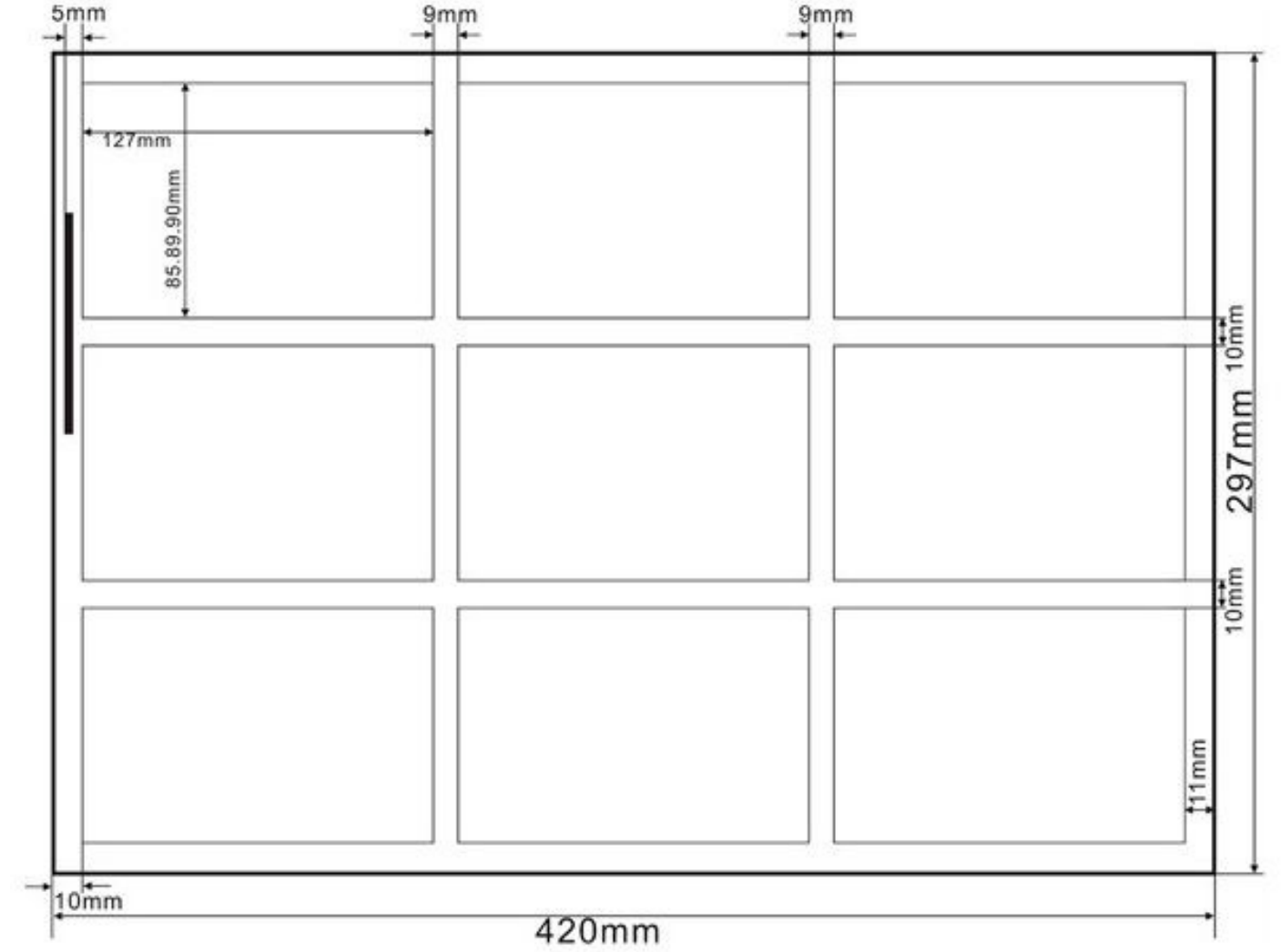
- A3 MODE 3




- A3 MODE 4



- A3 MODE 5




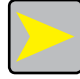




These can be accessed by pressing down the MODE/SET  button for 3 seconds.

Page 32

Page 33





Press  or  button to move the arrow selection cursor to the CARD OPTION menu and press the  button to enter the sub menus as listed.


To navigate through the sub menus for card option press the  button.

1. First cutting compensation

This is where the first cut is placed on your card.
All the card presets (except CUSTOM) default to Edge cutting. Datum selection is chosen our templates will have this set to 10mm as a default.
LCD display:

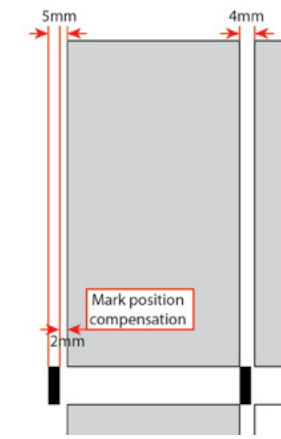




Press  or  button to change the compensation value $\square -5.0 \text{ — } +5.0\text{mm} \square$

Press  button and return to previous menu.

2. Mark position compensation

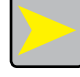
This refers to the gap between the bottom of the 'MARK' and the edge of where the next card is to be cut.
Here our example shows a 2mm gap between the 'MARK' and the edge of card to be cut.




To adjust this value press  or  button, until the LCD displays your required measurement.

Once your measurement is set press the  button to return to previous menu.

3. Card length compensation

Continue to press  button, until you see Card length compensation in the LCD display.

Press  or  button for compensation setting of $\square -3.0 \text{ — } +3.0\text{mm} \square$

Press  button and return to previous menu.


4. Groove width compensation

Your groove width is the gap (measurement in mm) between you card rows. You can apply a compensation to your width. This is a variable measurement and is dependant on the card template you have selected and the therefore the card mode.

Continue to press  button, until the LCD display:




Press  or  button for Compensation setting $\square -3.0 \text{ — } +3.0\text{mm} \square$

Press  button and return to previous menu


2-5-4 System settings

Under normal circumstances the BC480 will have been set up prior to shipping and you will not have to make any changes under the system settings. Should you wish to only change an individual card setting please do this under the CARD OPTION menu specific to the card mode selected.


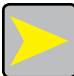

 **Attention:**
Any changes made under the system settings will change the values for all preset card modes. These are universal changes.


The options available under the system settings are:


- System speed
- System accuracy compensation
- Five column blade (longitudinal) width - for 5 card cutting cassettes
- Three column blade (longitudinal) width - for 3 card cutting cassettes
- First cutting compensation
- Mark position compensation
- Groove width compensation
- Last card compensation
- Penultimate card compensation
- Third from last card compensation
- Subtotal clear
- Restore factory settings
- Firmware version




From standby mode, press  and hold the button for 3 seconds to enter the setup menu, the LCD will display:



To navigate around the menus press the  or  buttons to move the cursor to system selection. Once you have selected the System option menu press the  button which will take you to the sub menus.

To navigate around the following sub menus use the  button.

 To easily make changes to a measurement values and when in the menu you would like to

change, press the  and this will add a small arrow above the measurement values as shown below. Keep pressing until the arrow falls above the measurement you want to change and use the  or  buttons to change the value until you are finished.





1. System speed
This menu sets the speed of cutting of your sheets.



Changing the system speed can affect the cutting accuracy and positioning of your cuts. The selectable options are 1-9 . 1 being the slowest and 9 the fastest setting.

As an example and using an SRA3 sheet for 85mm x 54mm cards (21 cards to cut) the system on setting 1 will take 9 seconds to cut the sheet and on 9 it takes 7 seconds to cut the sheet.

The BC480 will have been programmed and tested prior to shipping and so the value set in this menu should not be changed. However, if it has to be changed, we advise you do not set this to more than 8.

If you need to change the speed setting this can be done by using the  or  buttons.

2. System accuracy compensation
This refers to the scaling
This is set prior to shipping and should not be adjusted.





Press  or  buttons for compensation setting -3.0 to +3.0mm.

3. Five column blade width

This measurement is set prior to shipping of the BC480. Should you purchase an additional cassette, this measurement can be changed to match the cassette size - measurements are in mm.





Press  or  buttons, until you reach the cassette measurement.

4. Three column blade width

This measurement should be set prior to shipping of the BC480. Should you purchase an additional cassette, this measurement can be changed to match that cassette size - measurements are in mm.



Press  or  buttons, until you reach the cassette measurement (values between 1 — 99mm).

5. First cutting compensation



This is where the first cut is placed on your card.


When Edge Datum selection is chosen our templates will have this set to 10mm as a default.

LCD display:



If you are using different templates please set this to the measurement of where you would like your first cut to be.

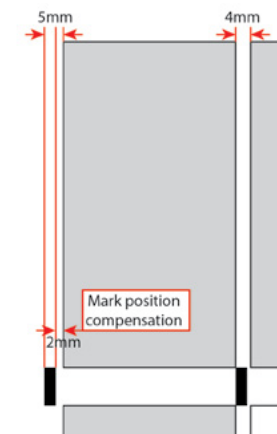
Press  or  button to change the measurement.



Press  button and return to previous menu.

6. Mark position compensation

This refers to the gap between the mark and the edge of where you want your card to be cut.

Here our example shows a 2mm gap between the 'MARK' and the edge of card to be cut.



To adjust this value press  or  button, until the LCD displays your required measurement.

Once your measurement is set press the  button to return to previous menu.

7. Groove width compensation

Your groove width is the measurement between you card rows. You can apply a compensation to your width. This is a variable measurement and is dependant on the card template you have selected and the therefore the card mode.

Continue to press  button, until the LCD display:



Press or button for Compensation setting $\square -3.0 \text{ — } +3.0\text{mm}\square$
 Press button and return to previous menu

8. Last card compensation

Should you need to adjust the cut position of the last card cutting use this option.

Continue to press or button, until the LCD displays:



Press or button for Compensation setting $\square -1.0 \text{ — } +1.0\text{mm}\square$
 Press button and return to previous menu.

9. Penultimate cards compensation

Continue to press or button, until the LCD display:



Press or button for Compensation setting $\square -1.0 \text{ — } +1.0\text{mm}\square$
 Press button and return to previous menu.

10. Third from last compensation

Continue to press or button, until the LCD display:



Press or button for compensation setting $\square -1.0 \text{ — } +1.0\text{mm}\square$
 Press button and return to previous menu.

11. Subtotal clear

Continue to press or button, until the Subtotal clear menu shows in the LCD display:





Press the button for a few seconds and release - the accumulated subtotal number will be cleared to 0.

12. Restore factory settings

Continue to press or button, until the LCD display shows the menu:



Press  button to complete the action and return the BC480 to factory settings - clearing all input values.

Press  button to return to the previous menu and then for 3 seconds to return you to the main operating display.





Attention


Only do this if instructed to by a trained customer support operative.

8. Firmware version

This menu displays the BC480's current firmware version. This may be required by a customer services representative in the event of a query.

Press  or  button, until the LCD displays as shown:



Press  button to return to the previous menu and then for 3 seconds to return you to the main operating display.

2-5-6 CUSTOM mode card settings

There are 11 changeable menu options under any of the CUSTOM format card modes.

- Card width
- Card length
- Card rows
- Card columns
- First cutting length - from the front of the sheet to the first card edge
- Mark position length - this is the 'MARK' width


- Groove width - this is the space between each card edge
- First cutting compensation
- Mark position compensation
- Card length compensation
- Groove width compensation



When setting compensation values the display will show an option of 0.00. The first 0. is a whole mm value i.e. 1mm, 2mm etc. The .00 are the tenths of a mm i.e. If the display shows 1.50 it means the value set is 1.5mm.




To easily make changes to a measurement value and when in the menu you would like to


change, press the  and this will add a small arrow above the measurement values as shown below. Keep pressing until the arrow falls above the measurement you want to change and use the



or buttons to change the value until you are finished.



To select a CUSTOM card mode and when in standby state press the  button to switch the sheet / paper specification. The sheet / paper sizes shown are; A3, A3+, SRA3, A4, and CUSTOM.

Select CUSTOM. By pressing the  button you can scroll through the available CUSTOM mode options - there are 10 custom mode options available to use. See Section 2-4-2 (4) to understand the modes.




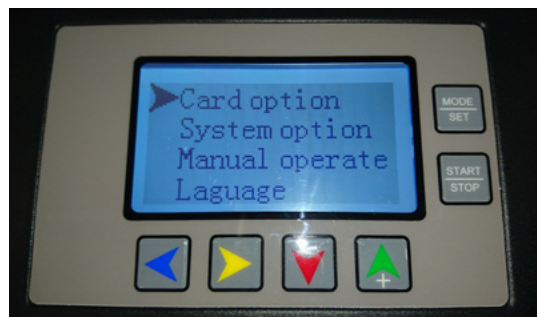
Attention




If you are in the AMERICAS the BC480 has been programmed with the modes as explained in Section 2-4-2 (4).

If you are in an EMEA region you will not have these settings programmed in the BC480. These custom modes are not preset and will therefore show settings that will not relate to anything you may be doing and are all fully adjustable.

To make changes to a CUSTOM mode select the mode number you would like to change and press



and hold the  button for 3 seconds to enter the setup menu, the LCD display will show:




Press  or  button to move the cursor arrow to CARD OPTION, press  to enter the following card settings:

1. Card width

This measurement refers to the longitudinal card cutting cassette delivered with the BC480. Use to set the correct value or if you change the cassette. i.e. If you purchased a 90mm cassette, put 90 in as your measurement.

Continue to press  or  button, until the LCD displays the correct size according to the card cutting cassette.



Press  or  button for compensation setting $\square 1 - 100\text{mm} \square$


Press  button to return to the previous menu and press again for 3 seconds to come out of the CARD OPTION menu and back to standby mode. The new measurement will show on the LCD panel.

2. Card length

The card length is the length of the card to be cut.

Continue to press  or  button, until the LCD displays:

Press  or  buttons to change the card length measurement from 1 to 600mm.



Press  button to return to the previous menu and press again for 3 seconds to come out of the CARD OPTION menu and back to standby mode. The new measurement will show on the LCD panel.


3. Card rows

This is the number of cards you can cut from your sheet depending on your card size and how much 'groove width' set between each cards row.

If you are printing non-bleed cards you can have a 0 groove width setting and therefore more cards per sheet.

Continue to press  or  button, until the LCD display:

Press  or  button to change the value from 1 to 99.



Press  button to return to the previous menu and press again for 3 seconds to come out of the CARD OPTION menu and back to standby mode. The new measurement will show on the LCD panel.


4. Card columns

These are the amount of columns your card cassette will cut and are a fixed measurement for 85mm, 89mm, 90mm and 95mm cassettes.

If you switch cassettes you will need to change your column size settings.

To change the column size continue to press  or  button, until the LCD displays:

Press  or  button to set between 1 and 9 columns.
For 85mm, 89mm, 90mm and 95mm cassettes this figure should be set to 3.
For 54mm and 55mm cassettes this figure should be set to 5. \square


Press  button to return to the previous menu and press again for 3 seconds to come out of the CARD OPTION menu and back to standby mode. The new measurement will show on the LCD panel.

5. First cutting length

This is where the first cut is made on the sheet. All other provided CUSTOM templates have been designed with a 10mm first cut position (for EDGE datum selection). If using the templates provided set this value to 10.

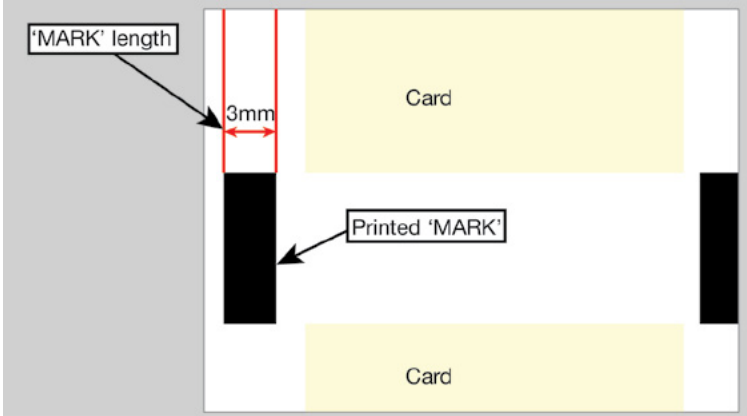
Continue to press  or  button, until the LCD display:


Press  or  button to set between +1.00mm and +30.00mm \square


Press  button to return to the previous menu and press again for 3 seconds to come out of the CARD OPTION menu and back to standby mode.


Note: Templates should be designed to ensure that the first cutting length is less than 15mm and no greater than 30mm.

6. Mark position length
The 'MARK' position length is the length of your printed 'MARK'.



Continue to press  or  button, until the LCD displays:

Press  or  button to set between +1.00mm to +30.00mm. Precision: ± 0.05 .


Press  button to return to the previous menu and press again for 3 seconds to come out of the CARD OPTION menu and back to standby mode.

7. Groove width
This is the measurement between the card rows. Refer to the provided templates or see Section 2-4-3 to set the groove width measurement.

Continue to press  or  button, until the LCD displays:





Press  or  button to set between 0.00 to 15.00mm. Precision: ± 0.05 .


Press  button to return to the previous menu and press again for 3 seconds to come out of the CARD OPTION menu and back to standby mode.

8. First cutting compensation
This is where the first cut is placed on your card.
When Edge Datum selection is chosen our templates will have this set to 10mm as a default.
LCD display:

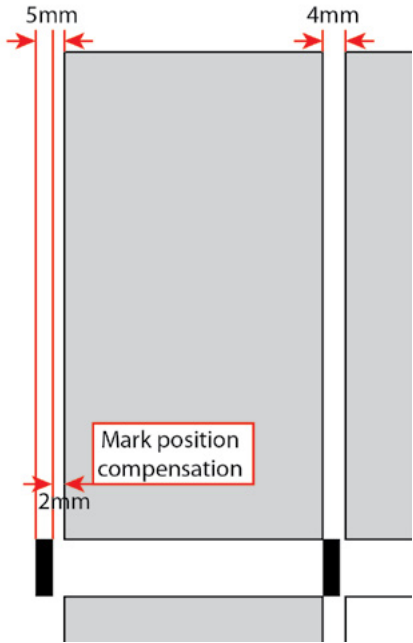




If you are using different templates please set this to the measurement of where you would like your first cut to be. Measure from the edge of the sheet to the top of the first card.

Press  or  button to change the measurement. Precision: ± 0.05 .

Press  button and return to previous menu.

9. Mark position compensation
This refers to the measurement between the bottom of the 'MARK' and the top (edge) of where the card is to be cut.
Here our example shows a 2mm gap between the 'MARK' and the edge of card to be cut.





To adjust this value press  or  button, until the LCD displays your required measurement. Precision: ± 0.05 .


Once your measurement is set press the  button to return to previous menu and press again for 3 seconds to come out of the CARD OPTION menu and back to standby mode.

10. Card length compensation
The card length compensation is available to adjust the length of your card should it not be cutting to the correct size as set in the system.

Continue to press  or  button, until the LCD displays:

Press  or  button and set a compensation setting of between -3.0 to +3.0mm. Set a - figure if the card is too big and set a + value if the card is too short.


Example: If you are expecting the card to be 55mm and it is cutting at 55.5mm set the value to -0.50. Or if the card should be cutting to 54mm and it is 53.6mm set the value to +0.40.


Press  button to return to the previous menu and press again for 3 seconds to come out of the CARD OPTION menu and back to standby mode.

9. Groove width compensation
The measurement between the card rows is the groove.
Section 2-4-3 shows the provided templates and their groove measurements. When cutting any of the templates, if the groove is too short or too long you will need to set a groove width compensation. If the measurement is too short set a + value and if it is too long set a - value.

Continue to press  or  button, until the LCD displays:



Press  or  button to set between 0.00 to 15.00mm

Press  button to return to the previous menu and press again for 3 seconds to come out of the CARD OPTION menu and back to standby mode.

2-6 Operating methods and processes

- Feed tray - to fine tune feed
- Left guide board
- Right guide board
- Alignment marks - ‘MARK’ sensor

1. Input power
Turn on the power switch, the machine is initialized into standby mode.

2. Paper settings
Place the printed sheets / paper ready for cutting into the feed table.
a. Paper width adjustment - ensure the paper guides are not too tight and are only gently touching the paper, the paper should be able to be pulled into the BC480 freely

- b. Do not put too much paper in the paper feed table - maximum of 3mm depth
- c. The front of the paper is curled up, causing poor feed - please correct and replace
- d. Please only feed the same type of paper at any one time. Mixed paper thickness and types can cause a miss feed.
- e. Do not use thick plastic paper, coated paper, PVC, paper thicker than that specified in the product specifications (>0.35mm), any media that is hard otherwise it will cause damage to the tool.


3. The left or right position setting of paper
The paper guides can be moved left and right to adjust for different paper sizes. When feeding SRA3 paper and to ensure correct cutting of the provided template positions make sure the paper guide to the rear of the BC480 is set to its farthest position.
Note where the sensor (arrow) mark falls on the first column of the card when using ‘MARK’ detection and ensure the ‘MARK’ is central to the sensor arrow and to your cassette size.


2. Feed cutting
Warning Feed and cut, do not put your fingers, hair in the first feeding near paper stick, so as not to get hurt
Warning Feed and cut, do not get something from the tray with your fingers.

Paper mode setting, press <start> key, set the size according to the setting mode for cutting, the cutting is complete will automatically stop is in standby mode; want to cut and then press the start button again.
Cutting end, the entire process is completed, please turn off the power switch.

2-7 Changing the longitudinal cutting cassette

If you have purchased an additional cutting cassette you will need to follow the procedure below to ensure correct fitting of the cassette.

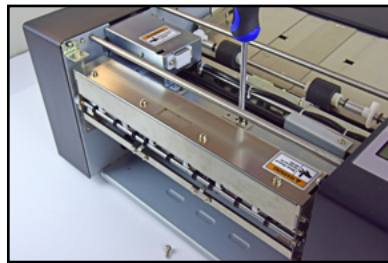
 Attention: Confirm that the power had been turned off and the power cable removed from its input port, so as to avoid electric shock.

 Attention: The cutter must not be touched, to avoid injury please pay close attention to this procedure for installation:

- Removing the longitudinal cutter (cutting cassette)*
- Turn off the power switch and remove mains cable from electrical socket
 - Remove the top cover - Picture 1
 - The cutting cassette has 3 screws holding it in place. 2 screws each on the top of the cassette - Picture 3 and a stabilizing screw to the side of the cassette - Picture 4. Each screw has to be removed and placed carefully to one side to use again.
 - Carefully remove the cassette by lifting upwards off its holding hooks, ensuring that at the gear end you have lifted the gears apart enough to remove the cassette. Pull away in a diagonal movement from the front of the machine first and then the rear gear area and place carefully to one side - Picture 5
 - You now have an empty area to place a new cutter cassette into - Picture 6



Picture 1



Picture 2



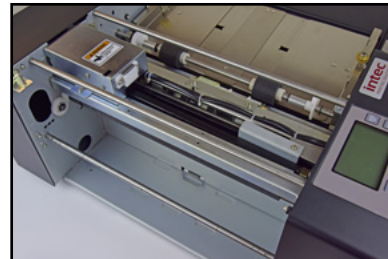
Picture 3



Picture 4



Picture 5



Picture 6

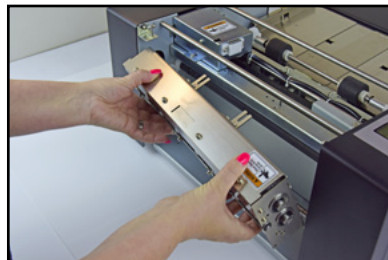
Installing the longitudinal cutter (cutting cassette)

- In the BC480, where the previous cassette has been removed (Picture 1), carefully offer up a cutting cassette as shown in Picture 2
- When offering up the cassette, place the gear end into the hole in the rear frame first and in a diagonal movement - Picture 2, making sure the gears fit together firmly whilst hooking the remainder of the cassette onto the holding pins on the side of the BC480. The locating bars, on the top of the cassette, should now be fitting flush to the top of the chassis with the locating bars fitting around the locating pins - Pictures 4 and 5
- Replace the 3 screws from where they were removed and tighten firmly once in position - Pictures 5 & 6, ensuring the cutter is level
- Replace the top cover ensuring the interlock switch is in place
- Turn on the power

Attention: If there is a grinding noise coming from the BC480, turn it off immediately and re-seat the cassette at the gear end.



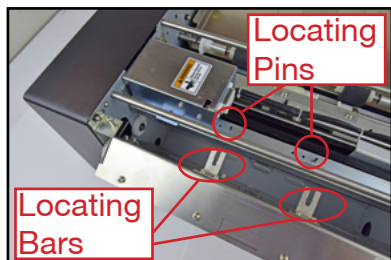
Picture 1



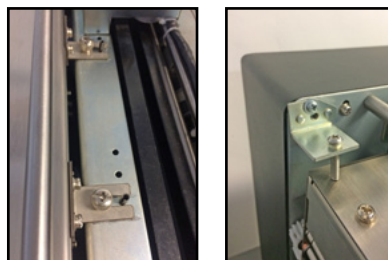
Picture 2



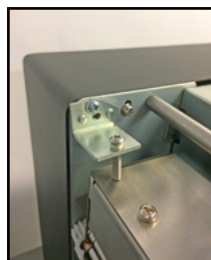
Picture 3



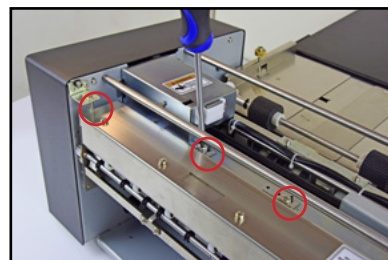
Picture 4



Picture 5



Picture 6



Picture 7

3. Troubleshooting

The BC480 will provide you with an audible beep if there is an error with cutting, a paper jam or if one of the safety switches has been interrupted. The LCD screen will also provide an indication of the error and the machine will stop working and continue to beep until the error or jam has been cleared. When cleared the machine will go into standby mode.

3-1 Safety cover failure

If you open the safety cover or try to operate the machine while the safety cover is open you will hear an audible beep and the machine will stop working. This message will appear on the LCD display:



This error message shows because the machine's magnetic interlock switch is not in its home position.

You can stop the audible beep by pressing the  button.


Solution: Place the cover back on the machine ensuring that the interlock switch is in position. The beep will disappear and the LCD will go back to standby mode.


3-2 Jam handling

If paper has been taken into the cutter but stopped or did not cut the machine will provide an audible beep and you will see this message:



Attention - DO NOT PULL PAPER BACKWARDS OUT OF THE MACHINE - you can damage the feed rollers and cutters if you attempt to do this.

Solution: Press the  button until the paper is released.

When the paper has been released press the  button to return to standby mode.


If this does not resolve your issue it is possible that paper is caught in the cutter cassette. Please follow this procedure to remove the paper:

- Turn off power
- Remove the top cover
- Remove cutter cassette - refer to Section 2-7
- Replace the top cover
- Turn on the power, press start button
- Make sure any of the jammed paper and paper scraps come out of the machine
- Turn off power
- Open the top cover
- Replace the cutter cassette
- Replace the top cover

Turn on the power.

If you still hear an audible beep or an unusual noise it is possible paper is still caught in the cutter mechanism. Follow this procedure:

- Turn off power
- Remove the backlog of paper in the paper tray
- Pull out the stuck paper
- Turn on the power

Press the  key to confirm whether there is abnormal sound or the BC480 is working normally.


3-3 Crosscutting knife cutting failure


There is paper stuck in the knife or the paper is too thick or curled.

When the LCD display shows:

- Crosscut knife cutting paper failed

Depending on the situation, press  or  button and the crosscut knife motor will move forward or reverse. Whilst doing this, confirm that the crosscut knife has separated any stuck paper and then press the press  or  buttons to remove the paper.

Press the  button and you will hear a click - this is so you know that the knife is working or whether it has been damaged.


Press  button to exit and return to standby mode.


3-4 MARK' was not detected

Cause: The BC480 has not been able to detect the black 'MARK' or the 'MARK' has not meet the requirements.



The LCD display will show this message:

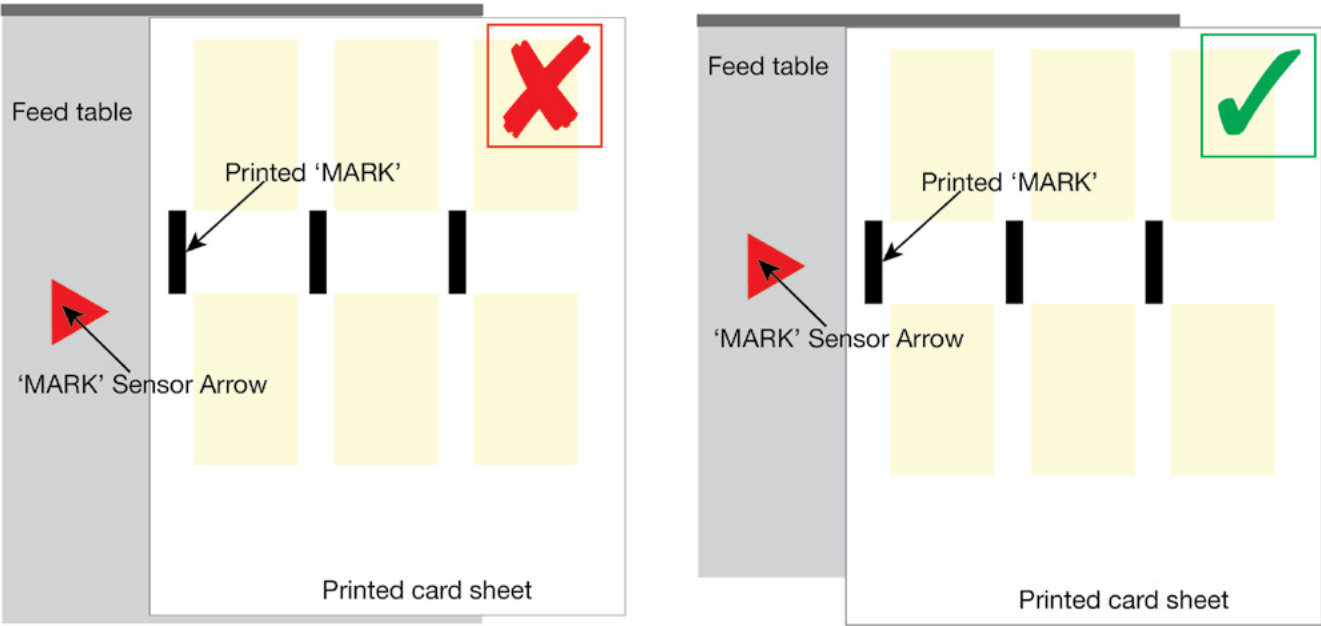


To eject the paper press  button, feeding or ejecting paper to troubleshoot the problem.

Press the  button to exit the error and return to standby mode.


Solution:


- Ensure you check that you have a printed 'MARK' on your sheet. If  is no printed MARK set your machine to detect by EDGE and not 'MARK' by using the  button.
- If you do have a 'MARK' printed on your sheet, ensure that the 'MARK' is correctly lined up in position on the feed table for the 'MARK' to be read. Refer to the templates to ensure correct placement of the 'MARK' on your sheet.
- Ensure the 'MARK' has been printed using only 100% black toner.
- If you have a 'MARK' and it is not lining up with sensor arrow on the feed table, your paper guides could be in the wrong position - move the guides to line the 'MARK' up with the arrow.




3-5 Paper too narrow

When the LCD displays: The paper is too narrow, use the 'MARK'.

Press  button

Press  button , feeding or ejecting paper to troubleshoot the problem.

Press the button  to exit and return to standby.

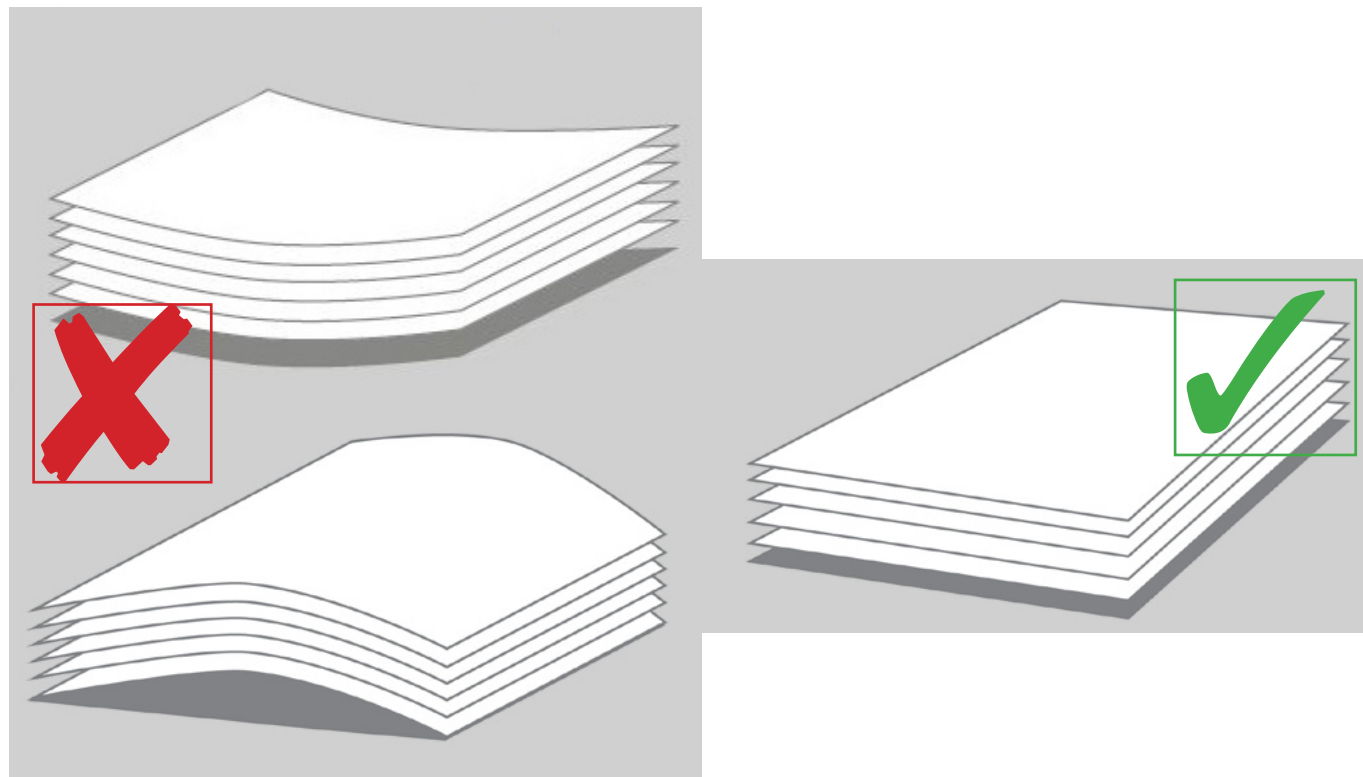
Solution : Check that you are using the correct paper size as selected on the LCD display.

3-6 Poor feed

There can be several reasons for poor feeding of your sheets.

These can be:

- Paper guides are too tight - adjust your paper feed tray guides
- Unsuitable paper is being used - thickness and quality - The paper is too thick (>0.35mm) or is too thin (<0.20mm)
- Only one sheet is present in feed tray - add additional sheets to increase feed height
- Incorrect paper size used - paper is too large or small for the option selected
- Too much paper stacked in the feed tray - no more than 3mm depth can be in the feed tray
- Paper is curled - present only flat sheets



Attention: Please do not use the paper as shown above as this may cause poor feed and poor cut positions.

If you require further customer support for the BC480 you should, in the first instance, contact the dealer you purchased the BC480 from.

Support contact information

Intec Printing Solutions Limited

Unit 11 Dawkins Road Industrial Estate
Hamworthy
Poole
Dorset
BH15 4JP United Kingdom
Tel: +44 (0)1202 845 960
Email: support@intecprinters.com

Intec Printing Solution Corporation

North Tampa Business Center
16011 N. Nebraska Avenue,
Lutz, Florida 33549
United States of America
Tel: +1-813-949-7799
Email: supportcorp@intecprinters.com

www.intecprinters.com