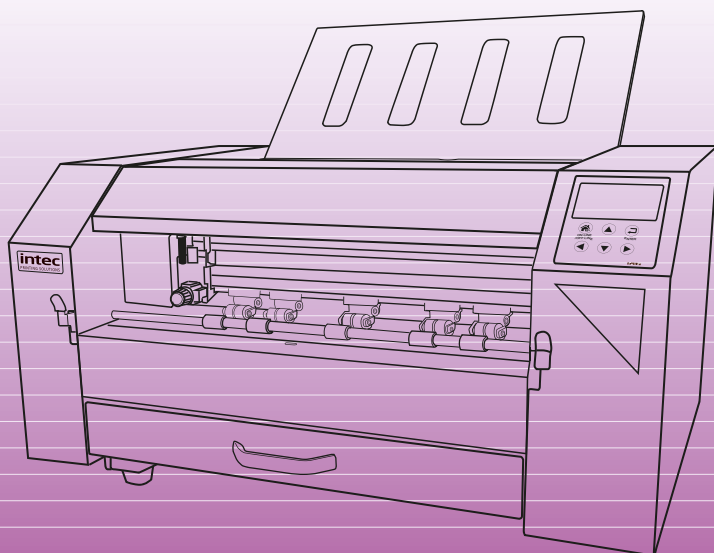


Digital Sheet Label Die-Cutter

ColorCut LC600 Series

Installation Guide - English



Congratulations on the purchase of your Intec ColorCut LC600 Sheet fed label cutter. Please carefully read this operating manual to assist you in setting up, designing and cutting your files so you can easily integrate your new Intec LC600 Cutter into your production environment.

Any type of reproduction of this manual requires the written permission of Intec Printing Solutions Ltd (UK). Changes, errors and omissions in the technical data and the product characteristics are accepted.

Intec Printing Solutions Ltd (UK) is not liable for any direct or indirect damages occurring as a result of the use of this product.

Version 1.0 (15.05.2020).

Contents

Preface -THE INTEC COLORCUT FLATBED SERIES	5
Safety Information	6
Introduction.....	7
Hardware Specification	8
Installation of the LC600 Cutter (Overview of steps).....	9
Chapter 1. UNPACKING & POSITIONING THE INTEC LC600	10
1.1 Contents of the ColorCut LC600 (Overview)	10
1.2 Contents of ColorCut LC600 (Detailed)	11
1.3 Identifying the key features of your ColorCut LC600	12
Chapter 2 - SETTING UP A WI-FI HOTSPOT	15
2.1 Using Wi-Fi to connect to LC600 - Live Video Feed	15
2.2 How to create a HotSpot (2 different approaches).....	16
2.3 Method 1 - Using Windows Wi-Fi HotSpot	16
<i>Configuring Windows Wi-Fi HotSpot</i>	<i>17</i>
<i>Setting the SSID when using Windows Wi-Fi HotSpot.....</i>	<i>18</i>
<i>Starting the Windows HotSpot.....</i>	<i>19</i>
<i>Daily Operation - Enabling Windows Wi-Fi HotSpot.....</i>	<i>20</i>
2.4 Method 2 - Using Wi-Fi Direct Access Point.....	21
<i>Configuring Windows Wi-Fi Direct Access Point.....</i>	<i>22</i>
Chapter 3. Software Installation - Intec ColorCut Pro	23
3.1 ColorCut Pro Overview	23
3.2 ColorCut Pro Installation.....	23
3.3 Intec ColorCut Pro - for CorelDRAW	26
3.4 Intec ColorCut Pro (Activation)	29
Chapter 4. Connecting and powering on the cutter.....	30
4.1 Turning the cutter on (The Initialisation Process).....	30
4.2 Connecting to your computer.....	31
4.3 ColorCut Pro - USB Connection confirmatio	31
4.4 ColorCut Pro - Device Type.....	32
Chapter 5 - The Intec ColorCut LC600 Cutting Tool	33
5.1 Cutter Blades (An overview of Blade types)	34
5.2 The Blade Holder - an introduction	35
5.3 Replacing the blade.....	35
5.4 Blade Adjustment (Adjusting the Blade length)	36
5.5 Installing Tools in your ColorCut.....	37
Chapter 6 Using the ColorCut LC600 Cutter	38
6.1 Overview of control Panel.....	38
<i>The HOME screen</i>	<i>38</i>
<i>The MENU settings & options</i>	<i>39</i>
<i>The MOVE screen.....</i>	<i>40</i>
<i>The TEST screen</i>	<i>41</i>

6.2 Checking the Blade depth & Force.....41

6.3 Calibration the Vision3 sensor offset to the Cutting Blade.....43

ColorCut Pro - Setting the Sensor Offset to the Blade..... 44

6.4 The Dual Grip Roller.....46

Changing the Dual Grip Roller 46

Graphics File Design - Creating your Artwork..... 48

Preface

Safety Information

Introduction

Specification

Installing your LC600 (Overview of steps)

Safety Information

Safety measures

Please read the information and safety measures carefully prior to installation and initial operation of the unit.

- Do not place any magnetic objects in the vicinity of the cutting head; otherwise uniform contact pressure may not be ensured.
- Do not remove the connection cable to the computer while cutting is in progress.
- Relieve the pressure on the pressure rollers when not in use by moving the pressure lever up.
- Do not open or reach into the unit when it is connected to electricity supply.
- Never open the casing and do not make any modifications to the unit yourself
- Ensure that neither liquids nor metal objects are put inside the Intec LC600 Sheet Label Cutter.
- Ensure that the wall socket used is grounded.
- Ensure that the connected voltage (230V) does not deviate by more than $\pm 10\%$. Otherwise install a voltage stabiliser.
- Remove the power plug from the unit if it will not be in use for a longer period of time.
- Never reach into the unit in the vicinity of the blade holder during the cutting operation
- Stop any cutting jobs in progress before readjusting the blade holder
- Always ensure that the Sheet Cutter is out of reach of children during operation and never leave the unit or individual parts of it switched on without supervision.
- Do not touch the tip of the cutting blade to avoid injury.
- Always place the unit on a stable base to prevent it from falling down.
- Disconnect from the power supply during thunderstorms; it can be damaged or destroyed by electrical surges caused by lightning.

INTEC COLORCUT SHEETFED - DIGITAL CUTTING SOLUTION

The Intec LC600 is designed primarily to cut label, decal and vinyl materials effectively. It includes a 'Dual Grip' feed system, that holds the media during cutting BOTH sides of the cutting head, enabling the LC600 to cut closer to the media edges than most other types of cutter.

There are also additional functions for cutting using perforated and dashed cut features, plus an additional pen calibration tool used for the initial configuration of the machine.

The ColorCut LC600 solution consists of 2 parts:

Hardware

The Intec Digital Cutting Engine

Integrated Vision3 CCD Sensor for automatic registration mark sensing

Automatic Job Recognition & Wi-fi Echo(Live preview) through Vision3 CCD sensor

An integrated autosheet feeder for up to 250 sheets*

An integrated, concealed exit catch tray

A separate external USB Wi-fi Dongle for PC systems (enabling, users to connect non-wi-fi based PC's to view the ColorCut's Vision3 sensors' Live Preview)

and

Software

The ColorCut Pro3 cutter control software consists of 2 parts.

The **ColorCut Pro plug-in**. Enables you to simply add Page Registration Marks for cut jobs and provides the ability to send projects designed in Adobe Illustrator® or CorelDRAW® directly to the Intec ColorCut LC600 cutter (no need to convert them to a different format). In addition the ColorCut Pro plugin can assign Job numbers or QR codes and send jobs to the ColorCut Pro job library which can be running on the same or a *different* computer.

The **ColorCut Pro Job Server**. A stand-alone version of ColorCut Pro, providing simple interface enabling jobs to be cut at any time, without requiring Adobe Illustrator or Corel Draw and without having to re-open the original file ideal for production environments, where the 'graphic designer' creates the work and other individuals within your company 'finish' or cut the work

The ColorCut Pro software works in conjunction with the Vision3 CCD sensor integrated into your ColorCut hardware, detecting the SMARTmark in a fraction of a second and adapting the cut path to any variations in the origin, scale or skew distortion of the print. The Vision3 CCD sensor can also read the QR code and retrieve your cut files instantly enabling any user to cut jobs as long as they have a QR code on them and enabling a mixed stack of jobs to be loaded for true unattended productivity.

Please use this guide to set up your ColorCut LC600 cutter and install your ColorCut software. For details specifically on ColorCut Pro software and how to use it with your LC600 please refer to the separate - ColorCut Pro (LC600) software guide.

INTEC COLORCUT LC600 - SPECIFICATIONS

MEDIA HANDLING		
Standard media sizes		A4 (210 × 297mm), A3 (297 × 420mm), SRA3 (320 × 450mm), A3+ (320 × 480mm)
Custom sized label media	Width	Media width (min-max): 150mm - 330mm
	Length	Media length (min-max):190mm - 750mm
Media thickness		0.25mm (180g/m²) - 0.35mm (350g/m²)
Auto-sheet capacity		Up to 250 sheet auto-sheet feeder
Media alignment		Slide adjustment with self centring guide
CUTTING CONTROL		
Mountable tools		Single tool holder, supports Cutting Blade (30°, 45° or 60°) for range of media types and also calibration pen for auto-calibration
Cutting system (force)		Contour cutter, with up to 7.35N (750gf) delivered in 190 steps programmable through Intec ColorCut Pro 3 cutting software
Maximum speed		960mm/s
SOFTWARE & CONNECTIVITY		
ColorCut Pro 3 Plugin (PC)		ColorCut Pro 3 plug-in (all features available). ColorCut Pro sends projects designed in Adobe® Illustrator® or CorelDRAW® directly to Intec ColorCut label cutter with no need to convert them to a different format. Requires: PC - Adobe® Illustrator® CS1 – CS6, CC, CC2014, CC2015, CC2017, CC2018 , CC2019, or CorelDRAW® X4 - X8, 2017 - 2019
ColorCut Pro 3 Plugin (Mac)		ColorCut Pro 3 Plugin for Mac enables the ColorCut Pro Job Library Client. Mac users add cut marks to Illustrator files and assign Job numbers and QR codes. Th jobs are sent to the remote ColorCut Pro Job Library on a PC for cutting. Requires: Illustrator CC2018- 2020
ColorCut Pro 3 PC Standalone		ColorCut Pro 3 – Job Server version of ColorCut Pro is PC only and enables jobs created by the ColorCut Pro plugin (above) to be cut at any time, without requiring Adobe® Illustrator® or CorelDRAW® and without having to re-open the original fil
PC minimum specificatio		64-bit. 2 GB of RAM (4 GB recommended). Minimum display resolution: 960×830 . For live preview PC must have Wi-Fi capability for direct connection to Vision3 camera sensor (USB Wi-Fi dongle included)
Connectivity		USB (1 connection to PC is required)
REGISTRATION CONTROL & JOB MANAGEMENT		
Registration system		Vision3 - High resolution CCD vision system reads registration marks on media, automatically adjusting cut lines to correct for scale or skew.
Cut position accuracy		+/- 100 micron
Auto job recognition		Yes: Cut file retrieval, supported through QR code (requires ColorCut Pro 3)
Mixed job recognition		Yes
GENERAL		
Weight		38kgs
Power supply		AC 110-220V 50/60Hz, 0.5A
Dimensions WxDxH		670 × 970 × 350mm (with media catch tray closed)

INSTALLATION START

- 1



Unpacking & positioning the LC600
Unpack the Intec LC600 cutter, check the accessories. Get familiar with the key features of the LC600. Then position the cutter with enough room to load media and for the retractable exit tray to be opened.
- 2



Setup Wi-Fi HotSpot
Configure the Wi-Fi Hotspot to receive the Live video feed (Install provided Wi-Fi dongle if your PC doesn't have Wi-fi capabilities)
- 3



Install the Software
Install the supplied ColorCut Pro 3 software for Illustrator or CorelDRAW. (Install Mac client where applicable)
- 4



Connect to your Computer
Using the supplied USB cable connect the cutter to your PC. Then check in the software that the cutter can be seen.
- 5



The ColorCut LC600 Tools
Overview of the Blade Holder, and different blade types. Setting the blade depth. How to install the Blade and Pen Tools.
- 6



LCD Panel & Calibrating the Cutter
Turn your cutter on, check Cutter appears on Wi-Fi Hot-Spot, launch ColorCut Pro & calibrate the sensor to cutting position in your software.
- 7



Load media and perform test cut
Use **TEST** cut to perform a cutting test and adjust blade if necessary. Load your media and start cutting.
(Please refer to your ColorCut Pro, Cut file design & Daily Operating Manual.

INSTALLATION FINISHED

Chapter 1. UNPACKING & POSITIONING THE INTEC LC600

1.1 Contents of the ColorCut LC600 (Overview)

Your Intec ColorCut LC600 is packed in 1 box/crate.

The box/crate contains :

The ColorCut LC600 Cutter (i)

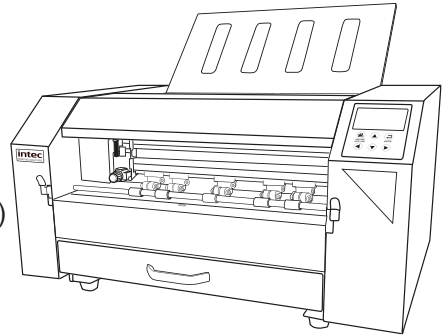
'Dual grip' Front Standard feed roller (iia)

'Dual grip' Front Narrow feed roller (iib)

A USB Wi-fi Dongle (iii)

The Accessories box (iv)

And the ColorCut Pro Software (v)



Item (i) - Intec ColorCut LC600 Cutter

NOTE: The standard 'Dual Grip' front media feed roller will be already installed in the LC600 cutter.

However, the supplemental narrow media feed roller will be typically placed in the retractable media feed tray. The narrow 'dual grip' front feed roller enables users of narrow label media to achieve consistent feed on narrow media without creating uneven wear on the standard 'dual grip' front feed roller.

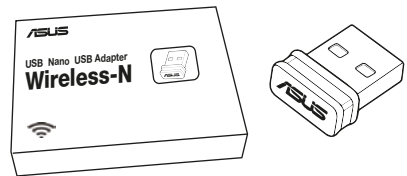


Item (iia) - Standard media feed roller
(Pre-fitted in front of LC600)



Item (iib) - Narrow media feed roller

The USB Wi-Fi dongle is for PC users, that may not have Wi-Fi capabilities on their PC, and it enables a Live Preview of the scanning and cutting process.



Item (iii) - USB Wi-fi Dongle

The final items found inside the accessories box, include the power cable and USB cable plus a disk containing your ColorCut Pro Software. A Blade Holder, a selection of Cutting Blades, a Calibration Pen Tool and a Creasing Blade.

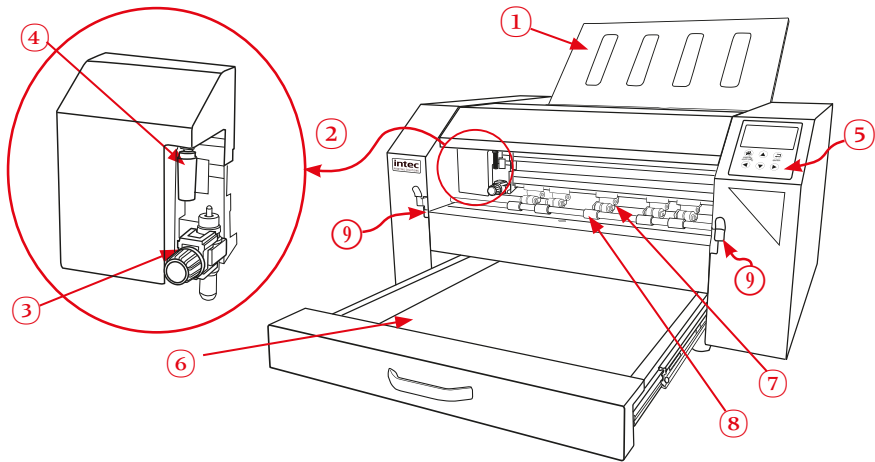


Item (iv) - Manuals, USB & Power Cables

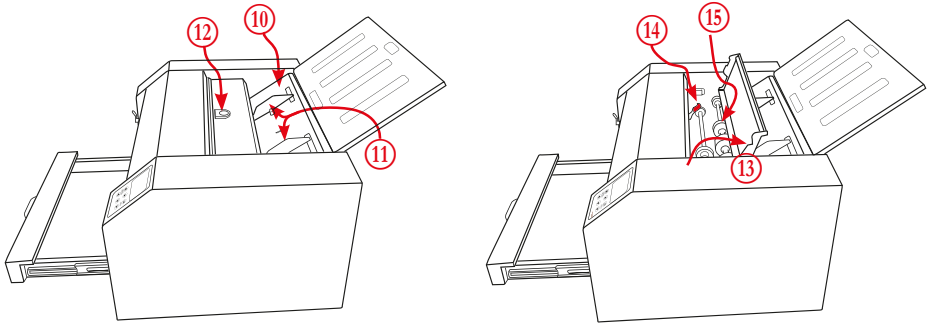
1.2 Contents of ColorCut LC600 (Detailed)

Item	Qty	Description / Purpose
Intec LC600 Cutter	1	Main Cutting Engine
'Dual Grip' Front Feed bar (Std.)	1	Secondary feed roller for standard paper sizes (>210mm width), to enable extended cutting area for standard paper sizes - Pre-Fitted in LC600 Cutter
'Dual Grip' Front Feed bar (Narrow)	1	Secondary feed roller for narrow paper sizes (<210mm width), to enable extended cutting area - shipped inside LC600 retractable feed tray.
USB Wi-Fi dongle	1	Supplied for users that do not have a Wi-Fi connection in their PC. Enables LIVE VIDEO Pre-View to be recieved by PC and shown in ColorCut Software.
Software (ColorCut Pro)	1	ColorCut Pro cutting control software - Direct plug-in for Illustrator or CorelDRAW - ColorCut Pro Standalone version (Job Server) - Sample templates
Blade Holder	1	Used for loading the blades in Tool Holder on the cutting head.
Pen Tool	1	Used in the calibration process for aligning the sensor to the cutting position
Blades	3	3 x 30° Blade 0.9/1mm (Yellow) 3 x 45° Blade 0.9/1mm (Red) 3 x 60° Blade 0.9/1mm (Blue)
USB Cable	1	For connection to the computer
Power Cable	2*	1 for Digital Cutting Engine *1 for Vacuum Pump (Not required FB520 /220v)
5A Fuse		/ Spare

1.3 Identifying the key features of your ColorCut LC600

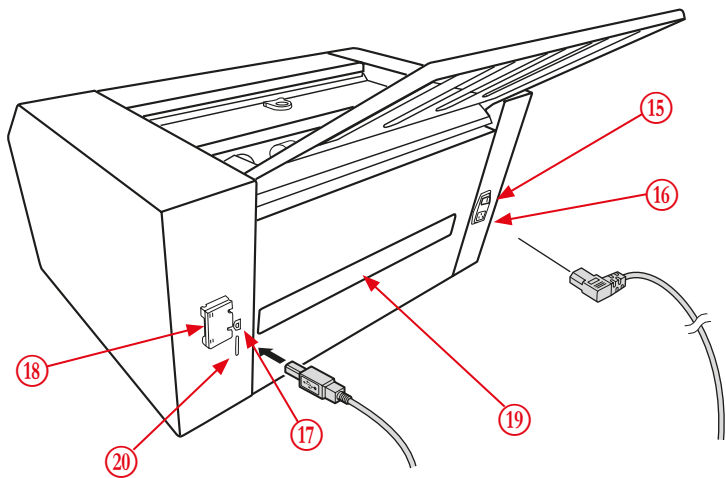


- ① **Media Support** Supports media in media tray
- ② **Tool Carriage** Holds the Cutting tool, moving left and right.
Drives cutting tool up/down
- ③ **Blade Holder** Holds the Cutting tool.
- ④ **Wi-Fi Antenna** Drawer exit tray catches cut media.
- ⑤ **Control Panel** Used to set and use the cutter's various functions.
- ⑥ **Retractable exit tray** Drawer exit tray catches cut media.
- ⑦ **Media Feed Rollers**..... Used to driver media back & forward during cutting.
- ⑧ **Front 'Dual Grip' rollers** Secondary grip rollers, enable extended cutting area.
- ⑨ **Front 'Roller' release**..... Lever to release Front 'Dual Grip roller when changing



- ⑩ **Media Tray**..... Media is loaded in here
- ⑪ **Media Guides**..... Self-Centering Media Guides to feed media straight.
- ⑫ **Cover Handle**..... Used to access Media Roller release lever.
- ⑬ **Feed Roller Release**..... Media release, lifts grip rollers to remove paper jam.
- ⑭ **Media Feed Rollers** Feed rollers used to feed media into LC600 cutter

1.4 IDENTIFYING KEY FEATURES of your ColorCut LC600 (Rear)



- 15 Power Switch Turns the ColorCut LC600 Digital Cutter ON/OFF.
- 16 Power Cable Socket Used to connect the cutter to the Mains Power.
- 17 USB Interface Connector.... Used to connect the cutter to a computer via the USB interface.
- 18 Cable Clamp Cable Clamp for USB cable
- 19 Cutting Paper Path Rear exit for paper in the cutting section of the 'Y' paper path.

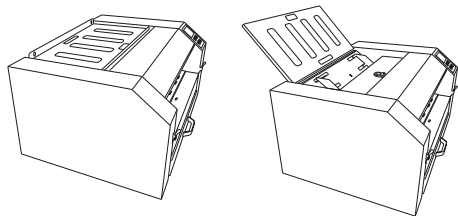


The LC600 uses a 'Y'(on its side <) shaped media path when feeding and cutting. Sheets are stacked in the feeder, which represents 1 arm of the 'Y' shaped media path. Upon receiving a feed command, the top sheet of media is fed into the cutter and the entire length of the sheet is fed directly out of the front of the cutter, it is then reversed back in to the cutter into the second arm of the 'Y' media path (this method of feeding the media all the way through the device and back, is often used in digital duplex printers - and is commonly referred to as a Peek-a-boo media path).

- 20 SDcard (Engineering feature , not required for customer use)

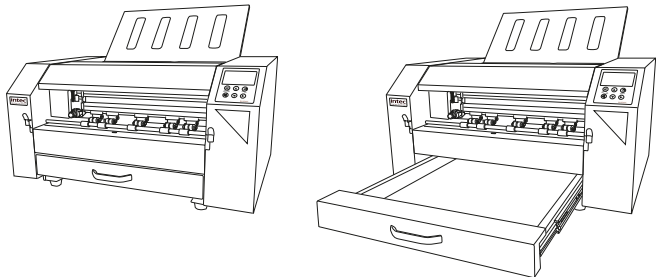
1.5 POSITIONING your ColorCut LC600

The Intec ColorCut LC600 weighs 38Kg (77 Lb) and should be placed on a strong & even table.



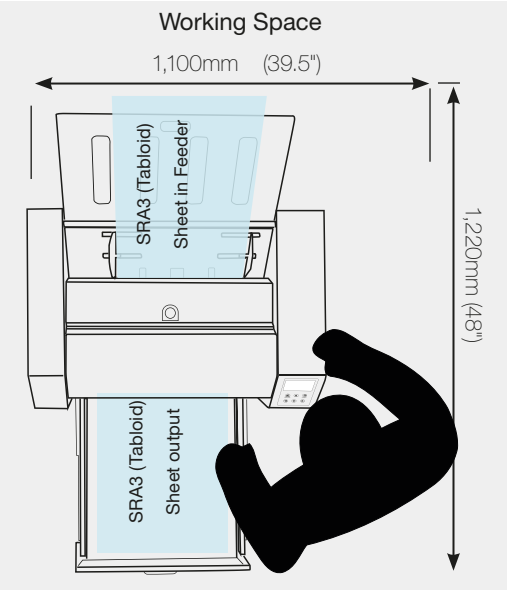
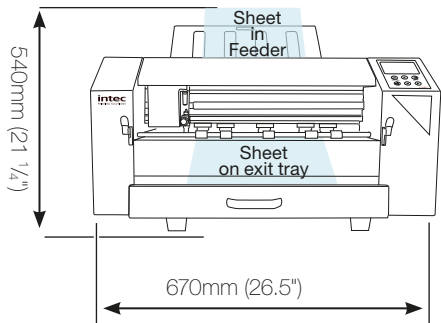
When deciding where to position, the Intec LC600, open the Media support tray (TOP) ready to accept media to be cut.

Next, open the retractable media exit tray at the base of the machine.



2.3.2 Positioning Requirements & Working Space

- 1. The Intec ColorCut LC600 weighs 38Kg (77 Lb) and should be placed on a strong & even table.
- 2. Ensure there is sufficient space above the LC600 to easily load sheets
- 3. Ensure there is space for the retractable exit tray to be opened, without causing an obstruction to walkways.
- 4. Working Space is different to Machine dimensions.



Chapter 2 - SETTING UP A WI-FI HOTSPOT

The LC600 uses the Vision3 registration system in conjunction with the ColorCut Pro software to identify your cutting registration marks (PageMarks), and to read the QR code for retrieving job numbers.



Please Note: ColorCut Pro does NOT require a live video feed to do this, your cutting will work perfectly fine with no video connection as all this is all handled in the cutter. However, in addition to the 'on-board' registration and QR code handling, the Vision3 registration camera's control system includes an image echo function that broadcasts the video feed from the Vision3 sensor over Wi-Fi. You can connect to the live video stream using the ColorCut Pro application and view the video feed which is useful when cutting, helping you to identify issues and so you can see while placing sheets if you are working in a manual mode. manually, We do recommend you do enable this feature. Please follow the guide below on how to connect to the live video feed before launching ColorCut Pro.

2.1 Using Wi-Fi to connect to LC600 - Live Video Feed

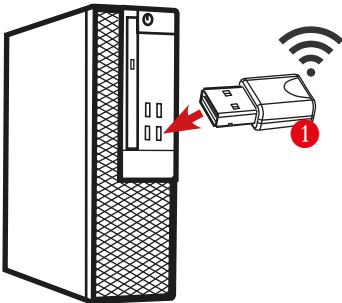
This LC600's Vision3 registration system has a camera image echo function, and the live feed from the echo is transmitted through WLAN. To connect to the Video feed, you will need to broadcast a Wi-Fi Direct connection from the computer that is running ColorCut Pro.

The LC600 cutter will connect to a 2.4GHz Wi-Fi Direct connection or Wifi-HotSpot defined as follows

SSID: H3
Password: 12345678

If your computer is not a laptop, then you may not have Wi-Fi capabilities on your PC, therefore your Intec LC600 is supplied with a USB Wi-Fi Dongle ❶ to enable you to do this.

If you are connected on a PC with a Wi-Fi connection (such as a laptop you can ignore this step).



1. Insert the Wi-Fi Dongle supplied with the LC600.

2. When the dongle is recognised, please install the drivers (supplied in the Wi-Fi dongle box).

2.2 How to create a HotSpot (2 different approaches).

Once you have Wi-Fi enabled on your computer, there are 2 methods to connect to your Intec LC600 flatbed cutter .

1. Use the built in Windows HOTSPOT function. This is easy to use, and uses Windows 10's own HOTSPOT feature.



Note: Even though, you will be connecting directly to the LC600 cutter (and you are not using the internet for this connection), the Windows HotSpot feature requires an internet connection before you can enable the HotSpot. So please bear in mind, without an internet connection made via a router the Windows HOTSPOT feature can not be enabled. If you do not have an internet connection then we recommend creating a DIRECT connection (Below) which is how newer devices like some TV remote controls (Roku 3) work, to do this use a utility like **Wi-Fi Direct Access point** (below).

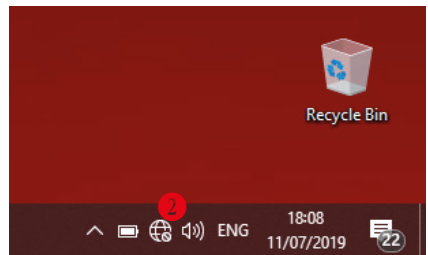
2. Use the Wi-Fi Direct Access Point. This is a paid for utility from the Windows Store, for Windows 10 users.



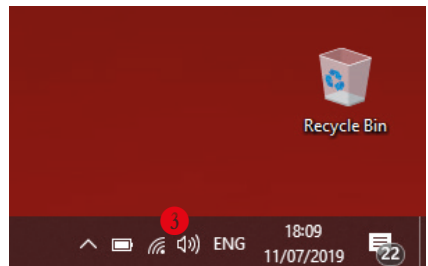
Wi-Fi Direct, makes a direct connection the the LC600's Wi-fi video feed f om the Camera eliminating any routers or network management issues. It does this using the Wi-Fi Direct standard, which enables devices to easily connect with each other without requiring a wireless access point. Wi-Fi Direct allows two devices to establish a direct Wi-Fi connection without requiring a wireless router.

2.3 Method 1 - Using Windows Wi-Fi HotSpot

1. Check the task bar on your computer and ensure you have an internet connection. If NO Wi-Fi connection shows, or the "Not connected to the Internet" icon shows **2** then click on the icon and connect to your Wi-Fi router and enter any ID or passwords required.



2. Check the task bar on your computer and ensure you have a the Wi-Fi connection showing **3**. (This is essential to start the Wi-Fi HotSpot)



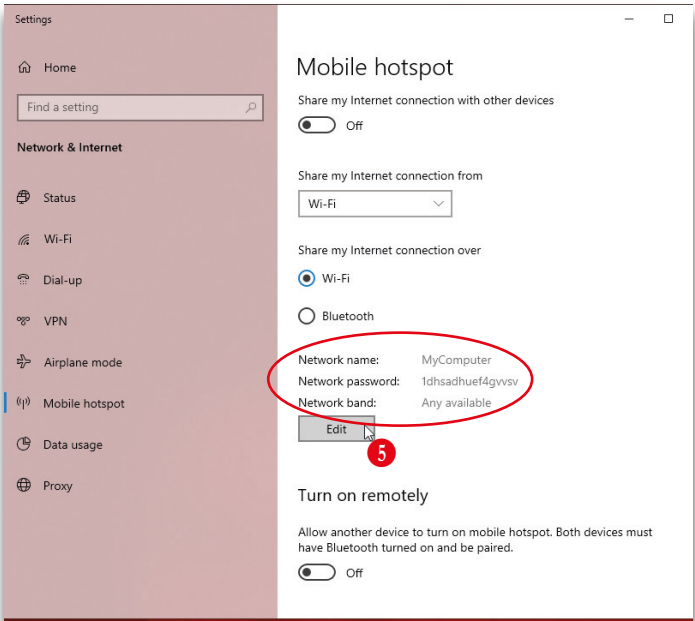
Configuring Windows Wi-Fi HotSpot

3. Left click on the Wi-Fi icon 3 in the task bar to display the 'Wi-Fi, Network & Internet setting' menu, then Right mouse click over the Mobile Hotspot 4 button in the lower right.

The sub menu item 'Go to Settings' will be displayed. Click this.



4. The 'Windows Mobile hotspot' configuration menu will be displayed. This menu is only required when initially setting up the HotSpot. Each time you activate the HotSpot after this, the settings for the SSID, and Password will be remembered.



The Intec LC600 is set to make a direct connection to a 2.4GHz WLAN with an SSID of "H3", and broadcasts the Live video feed to that connection .

You need to set up your HotSpot to match this SSID name. Click Edit 5 to configure your Hotspot to 2.4GHz, and set your SSID and the password for connection.



If you can't activate the HotSpot and you see the message show to the right, then you skipped step 2. You must ensure you have an internet connection to use Windows HotSpot, even though the cutter does not need one.

Mobile hotspot

We can't set up mobile hotspot because your PC doesn't have an Ethernet, Wi-Fi, or cellular data connection.
Share my Internet connection with other devices
☐ Off

Setting the SSID when using Windows Wi-Fi HotSpot.

5. Under, *Network Name*, enter the SSID name ‘H3’ as shown ⁶. Within the field, *Network password*, enter the password ‘12345678’ ⁷ (The LC600 automatically will connect to the SSID H3, with a password of ‘12345678’. So, these entries must be set to match.

Edit network info

Change the network name and password that other people use for your shared connection.

Network name

H3

Network password (at least 8 characters)

12345678

Network band

Any available

Save Cancel

6. The Intec LC600’s Image Echo feature broadcasts using 2.4GHz, so it is essential that you set the ‘*Network Band*’ ⁸ to 2.4GHz, if you set it to 5GHz the cutter will not connect to your HotSpot and you will not be able to see the Camera.

Edit network info

Change the network name and password that other people use for your shared connection.

Network name

H3

Network password (at least 8 characters)

12345678

Network band

Any available

5 GHz

Any available

2.4 GHz

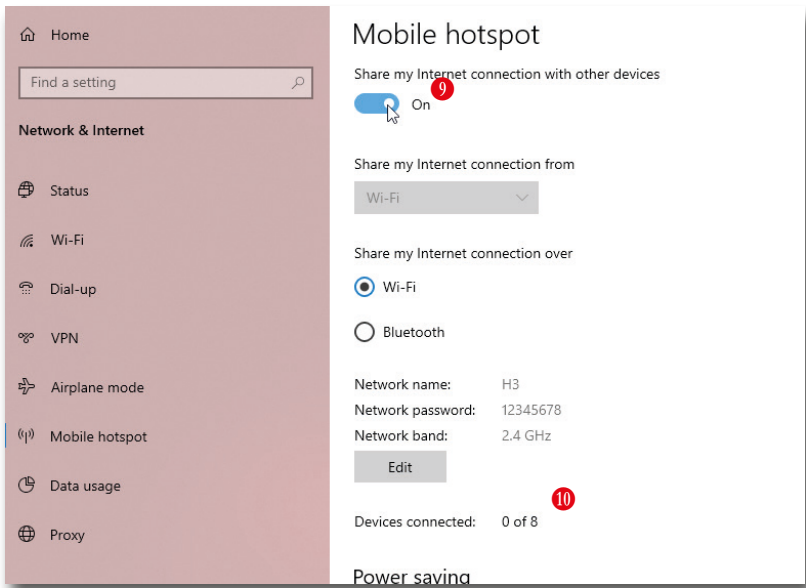
Save Cancel

7. Click save to save finish and save your setting. These will be emembered and in future you only need to enable or disable the connection. When you click SAVE you will be returned to the ‘*Windows Mobile hotspot*’ configuration dialogue box

Starting the Windows HotSpot.

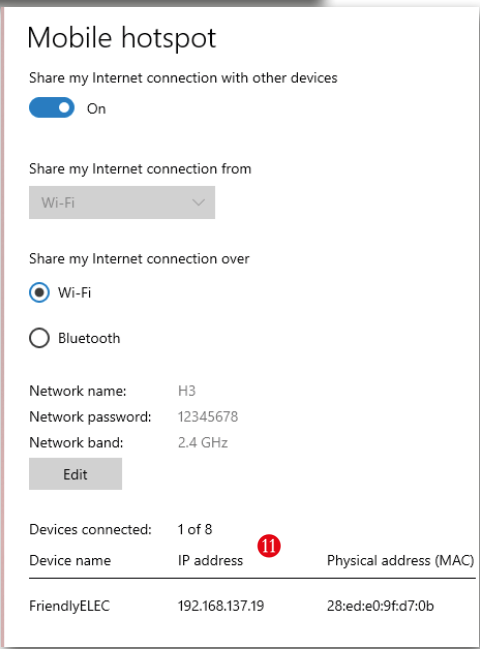
8. In the 'Windows Mobile hotspot' configuration dialogue box, turn ON the 'Share my hotspot connection with other devices' 9.

At the bottom of this dialogue box, you can see the devices that connect to your computer 10. It will take approx 30 secs to 2 mins for the Intec LC600 to see the connection and connect to your Hotspot.



9. After a short period (30 secs to 2mins) you should see the Intec LC600 device connect, the IP address will be shown in the connected devices list, so you know it has connected. 11.

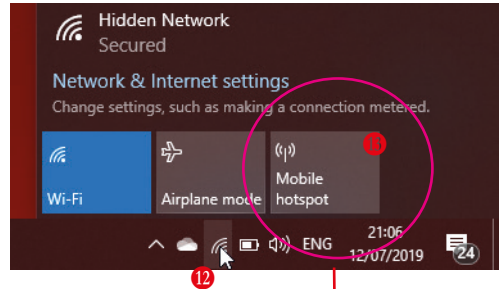
The setup is complete, in future, you only need to enable and disable your HotSpot, to connect to the cutter. (See step 10 to understand how to do this).



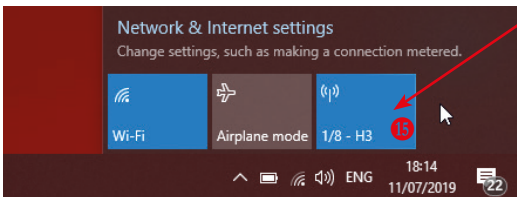
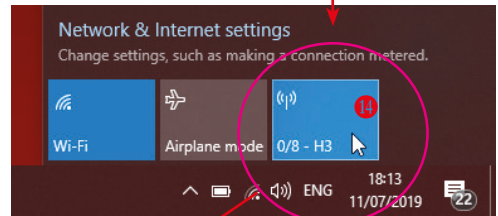
Daily Operation - Enabling Windows Wi-Fi HotSpot.

10. During daily operation you can now enable the connection to your Intec LC600 cutter by simply clicking on the Wi-Fi icon in the Windows task bar **12** (Bottom right of your screen).

Next click on the Mobile HotSpot button **13** that appears in the lower right corner of the 'Network and Internet settings' Dialogue box/menu that appears.



The Mobile HotSpot button will change color when it is activated, and indicate the SSID name (H3), and how many devices are connected. **14**



After enabling the mobile Hotspot, ensure you power ON the Intec LC600 cutter, and allow 30 secs - 2mins for it to connect to your HotSpot. Your Mobile HotSpot will show when the device is connected. **15**

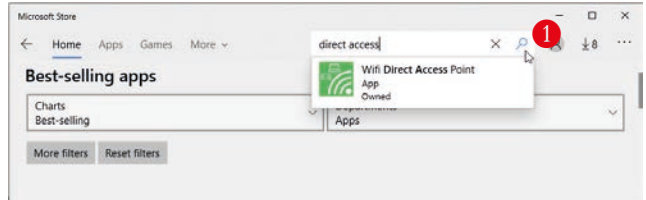
You can now skip to the section on Installing ColorCut Pro and calibrating your LC600 cutter.

However, if you do not have an Internet connection then follow the steps on how to set up a direct connection to the Cutter without requiring an internet connection or router. (Wi-Fi Direct Access Point following.)

2.4 Method 2 - Using Wi-Fi Direct Access Point

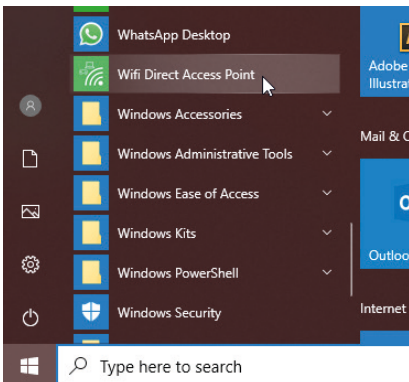
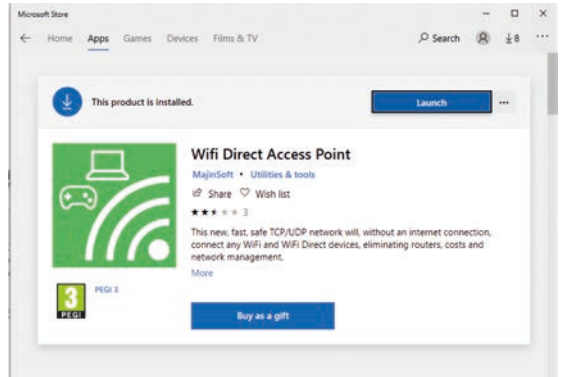
1. **'Wi-Fi Direct Access Point'** is an app available from the MicroSoft Store. It is available for Win 10 users, and enables you to set up a Direct Wi-Fi connection to the Intec LC600 Flatbed without the need for an internet connection or a separate router. It is ideal for users without connection to a router OR users in secure environments where connection to the Internet is not permitted for IT reasons, and as such the normal Windows Wi-Fi HotSpot will not work.

'Wi-Fi Direct Access Point' (and other apps may be available), is a paid for application available from the MicroSoft Store.



To download it, open the Microsoft Store program from your Windows Start Menu, and click on the SEARCH box **1**, enter the search term 'Direct Access' and the app will appear in the search.

2. Click on the application and click [**GET**] to download it. (Note: This is a paid app and not part of the Intec LC600, please check it is compatible with your Wi-Fi network (The USB Dongles supplied have been tested, so if you are using these it should be fine)



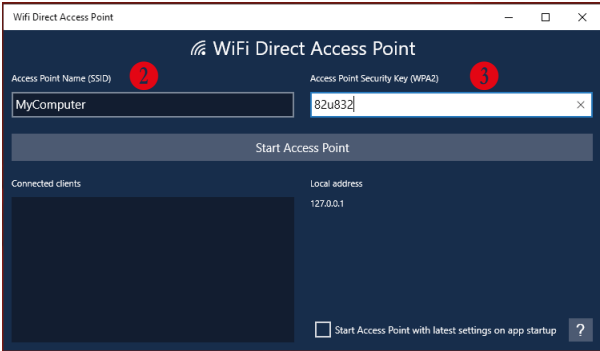
3. After installing the Wi-Fi Direct Access Point, locate the app from your Windows START Menu and click to launch it.

Configuring Windows Wi-Fi Direct Access Point.

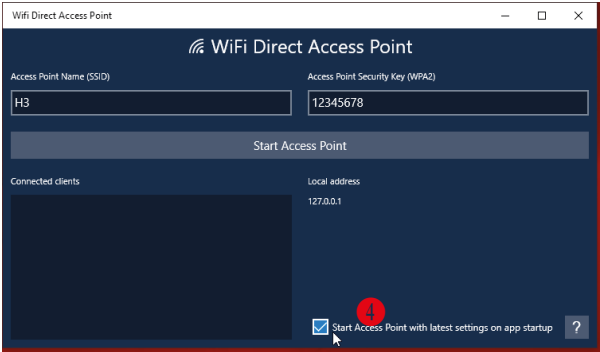
4. The first time you launch Wi-Fi Direct Access Point, you will need to set the Access Point Name (SSID) and the Security Key/Password to match the SSID and Password that your ColorCut LC600 will try to connect to.

Click on the Access Point Name SSID 2 and set it to 'H3' .

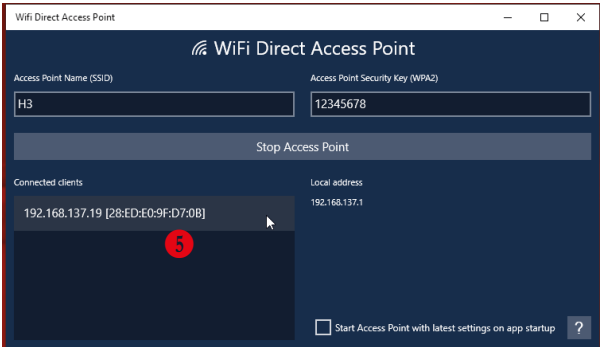
Click on the Access Point Security Key and set the password to '12345678' 3



5. Having entered the Access Point Name, and the Password ensure that it starts each time with the same settings by clicking the check box next to “Start Access Point with latest settings on app startup” 4. Click on the button ‘START ACCESS POINT’ to configure the PC to accept Direct Wi-Fi connections.



6. After clicking ‘START ACCESS POINT’, the LC600 will take approx 30 secs to 2mins to see the Wi-Fi access point and connect. When the LC600 connects, you will see the device and IP address appear in the left column, 5



You can now skip to the section on Installing ColorCut Pro and setting up your LC600 for initial use and daily operation.

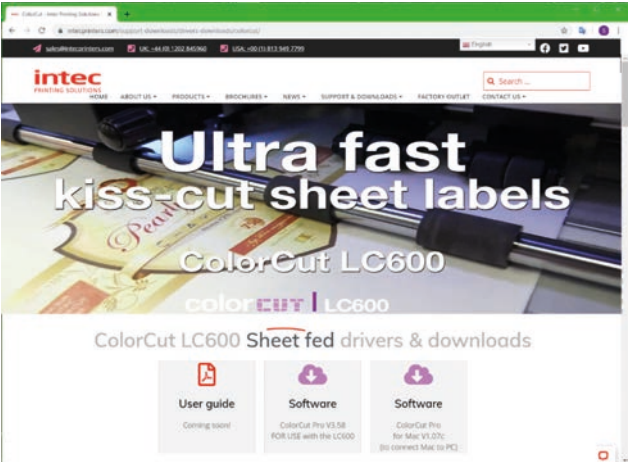
3.1 ColorCut Pro Overview

The Intec ColorCut Pro software is a professional cutting package that creates cutting files directly from Illustrator or CorelDRAW using the vector lines you have drawn, ColorCut Pro communicates directly with your cutter and ultimately cuts your jobs.

There are two installation versions of ColorCut Pro, a plug-in (which requires Adobe Illustrator® (MAC or PC) or CorelDRAW® (PC)) which creates the cutting jobs directly from your vector lines and can either send your jobs directly to the cutter (PC only) or create a cut file that can be retrieved at any time using a QR code (automatically added to the sheet) (MAC & PC clients) then users can cut a different computer (acting as a production server).

This standalone version known as the ColorCut Pro Job Library server, which can be installed any PC and directly connected to the Intec LC600 sheet fed cutter.

Intec ColorCut Pro Software for your Intec ColorCut Flatbed is supplied on the included CD, however it may also be downloaded from our website
<https://intecprinters.com/support-downloads/drivers-downloads/colorcut/>



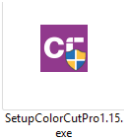
Please note:



ColorCut Pro requires a **Minimum display resolution : 960×830**
The computer directly connected to the ColorCut LC600 must have Wi-Fi capability for Direct connection to iVision3 Camera Sensor.
For users with no Wi-Fi capabilities a USB Wi-Fi dongle is included.

3.2 ColorCut Pro Installation


Please run the installation program:
SetupColorCutPro.exe

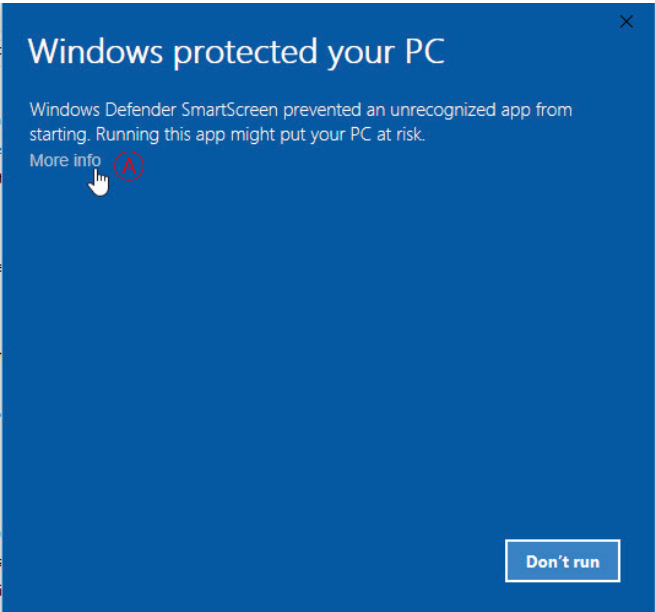


The setup program requires various confirmations for the installation of the program.
On some computers you could be asked the system administrator's password to execute the installation, in the case you do not have this information; contact the technician who administrates your system.

3.4.1 Software Installation - Intec ColorCut Pro (Cont.)

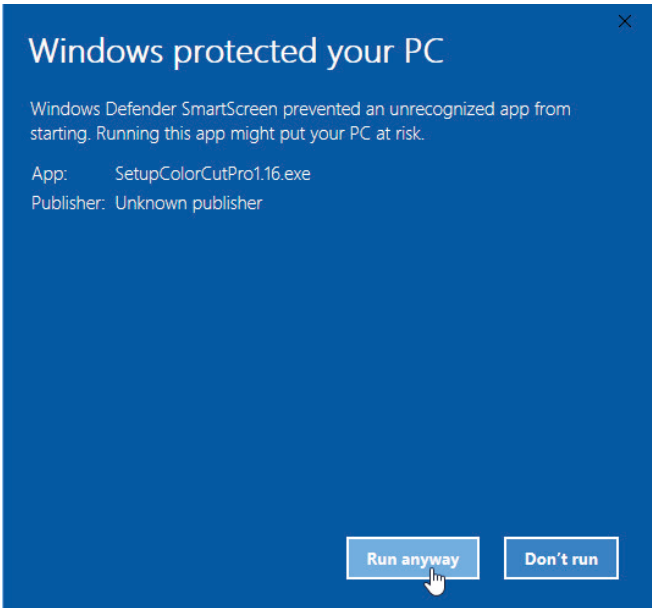
In some instances, (depending on your PC configuration) Windows 10 users ‘may’ see a security warning appear, as this is not a Microsoft application.

Do not worry, this is perfectly normal. Click more info .



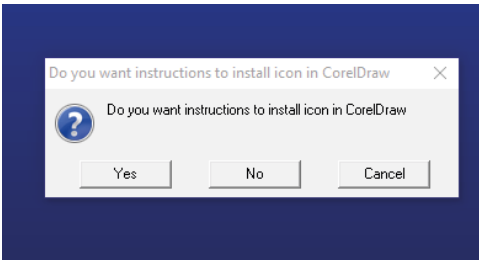
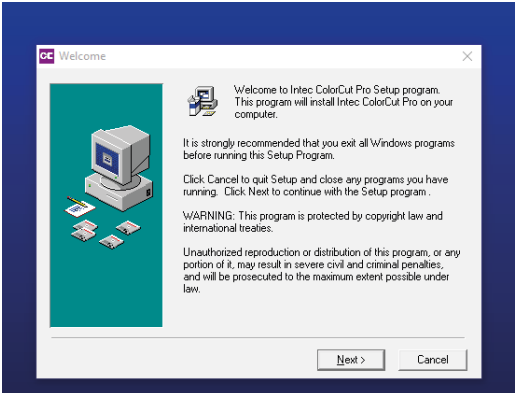
The dialogue box will confirm the App. you are installing is the ColorCut Pro App.

Click [RUN ANYWAY]



3.4.1 Software Installation - Intec ColorCut Pro (Cont.)

To start the installation of the ColorCut Pro software, simply click the [NEXT>] button.

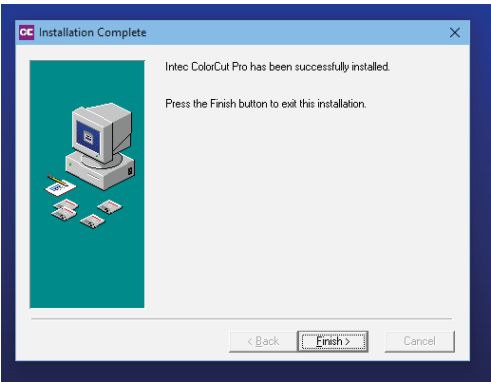


By default the ColorCut Pro software will automatically install into Adobe Illustrator if it is installed on your computer.

If you have Adobe Illustrator, then the installation has completed and click [NO] on the dialogue box asking you if you wish to review the CorelDRAW installation instructions.

If you have CorelDRAW, SKIP to the next page.

If you have Adobe Illustrator , then the installation has finished and you should now advance to Step 4.(Connecting to your computer) in this manual.



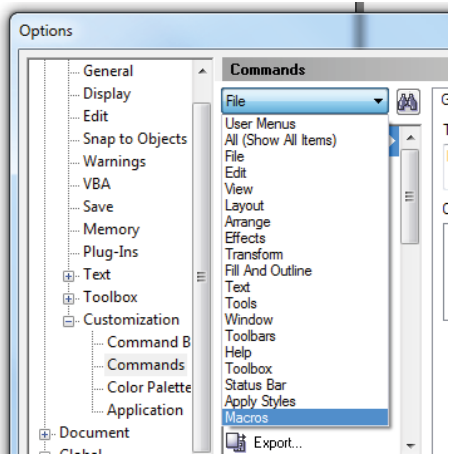
3.3 Intec ColorCut Pro - for CorelDRAW

As part of the ColorCut Pro installation, the plug-in's to CorelDRAW are installed, however you need to add a short cut into CorelDRAW.

Open CorelDRAW then click on the Tools menu, and select Options.

From the Options dialogue box, select: Customisation and under this, click Commands

In the panel on the right, select macros from the drop down.



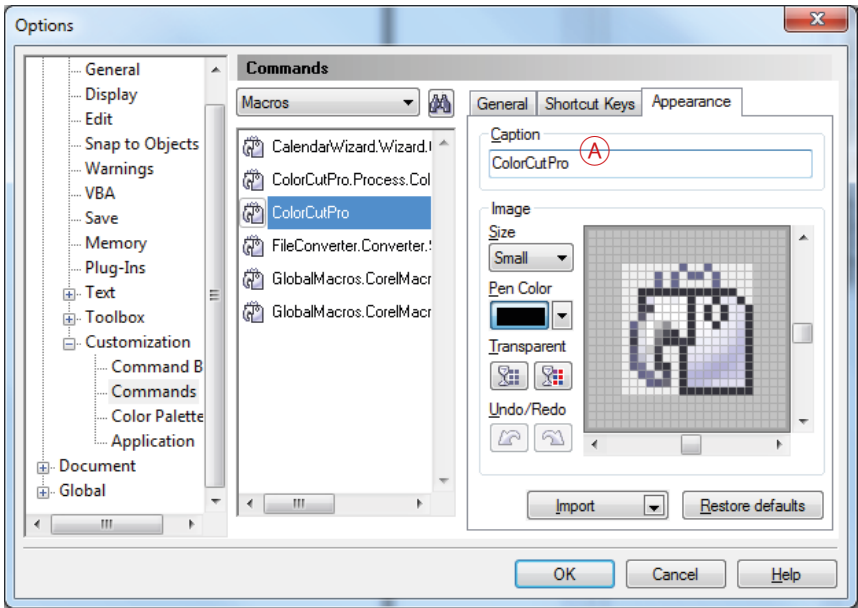
select either : colorcutpro.process.colorcutproall

or

 colorcutpro.process.colorcutpro

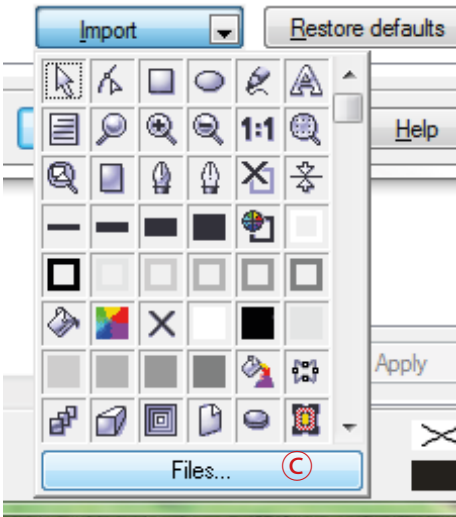
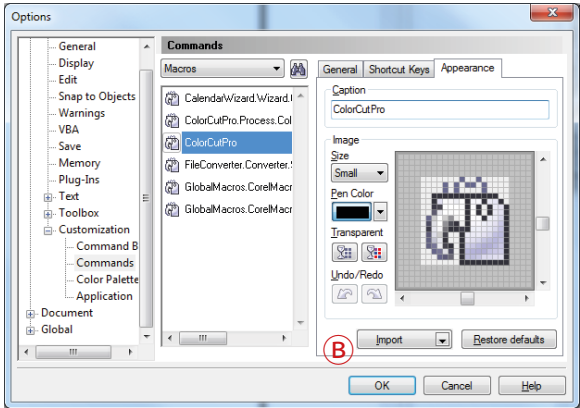
The 'all' version exports the entire drawing however the desired way to work is with layers, and the 'non all' version exports just the current layer. We recommend unless specifically want to export the entire drawing, or if you don't know the answer select the 'non-all' version.

This is quite a long name, so, on the appearance menu (Under caption), **A** change the name to ColorCutPro. This is the name that will appear on the menu.



Intec ColorCut Pro - for CoreIDRAW (Cont)

From the same Appearance TAB , click on[Import] (B)



From the [Import] drop down, select [FILES] (C) at the bottom.

navigate to :

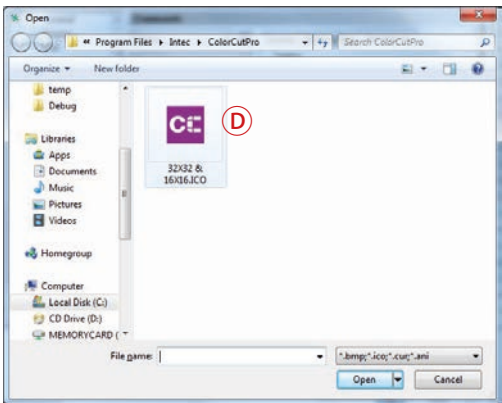
(For 32bit users of CoreIDRAW)

C:\Program Files (x86)\Intec\ColorCutPro

or (For 64bit users of CoreIDRAW)

C:\Program Files\Intec\ColorCutPro

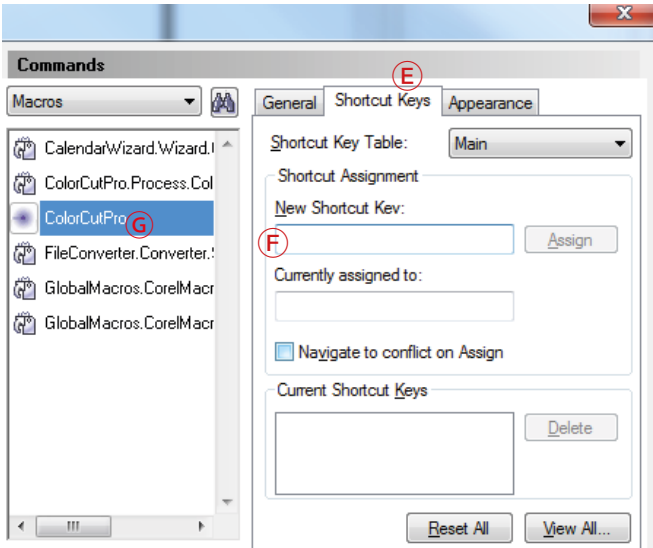
and select the icon as shown below (D).



Intec ColorCut Pro - for CorelDRAW (Cont)

Back on the ShortCut keys Tab **E**.

Place the mouse cursor at **F** (New Shortcut Key) and click then hold down the Alt key and type C.



Next you need to add the ColorCutPro icon to your tool bar.

Click on the ColorCutPro Command **G** from the Macro list, press and hold the left mouse button and drag the ICON next to the printer icon on the tool bar **H** and release.



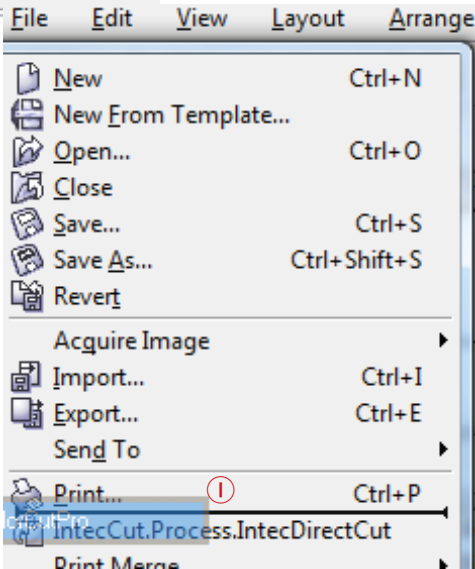
Next we want to simply add the ColorCutPro plugin to your FILE MENU next to the PRINT item.

Press and hold on the Command name again at point **G**, CLICK and HOLD the left mouse button and DRAG the icon until you position the mouse over [FILE] Menu, which will pop open the file menu

Then move the mouse to next to the print button **I** without releasing it and then let go of the mouse button.

You should now see the ColorCutPRO menu option appear.

Installation of Cor elDRAW is now complete.



3.4 Intec ColorCut Pro (Activation)

Activating ColorCut Pro

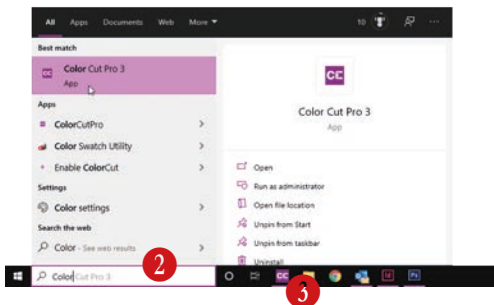
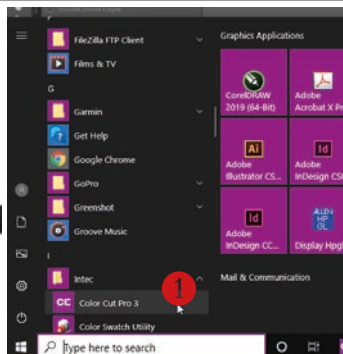
The first time you open the ColorCut Pro application, you will need to activate it before you can use it.

To launch ColorCut Pro, use the Windows [START] menu, (or press the Windows key) and select the [ColorCut Pro] icon from the Intec folder ①.

Alternatively, type the first few letters of ColorCut Pro in the search bar ②, to find the ColorCut Pro application.

You can PIN the ColorCut Pro application to the START bar, or quick launch taskbar ③ if required.

NOTE: You can also launch from inside Illustrator or CorelDraw, however this requires some vector lines on the page before you do so, thus for the initial launch, please use one of these methods.



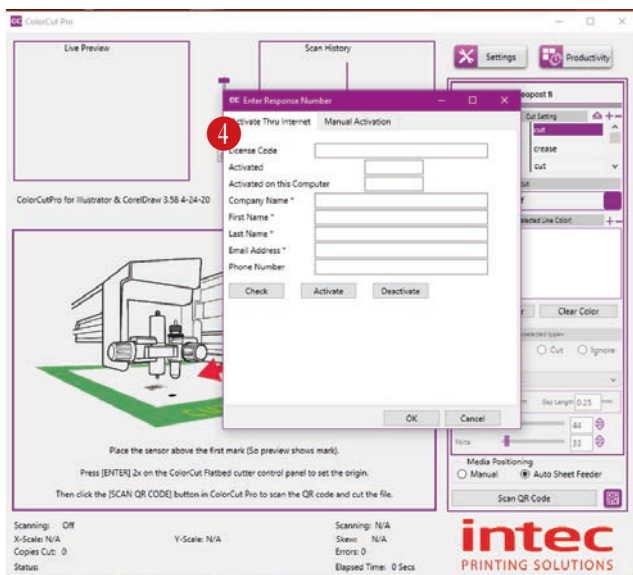
Upon first launch, the ACTIVATION screen ④ will appear.

The ColorCut Pro software can be activated automatically online. Enter the Licence code from the card supplied with your ColorCut Pro software and fill out your details

The click [ACTIVATE]

If your computer does not have Internet access, you can manually activate the software by clicking the [MANUAL ACTIVATION] tab in the window.

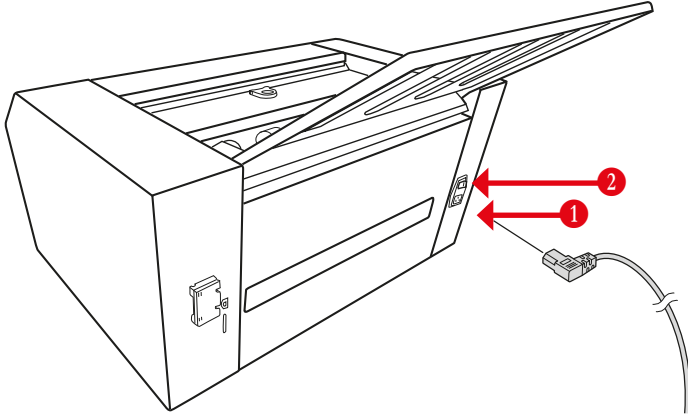
When manually activating the software, a challenge number is displayed, you will need to either email this number to Intec Support, or call one of the activation numbers as shown in the dialogue box. The activation team will email back the response code, or provide it over the telephone. Enter the response code to activate your software.



Chapter 4. Connecting and powering on the cutter.

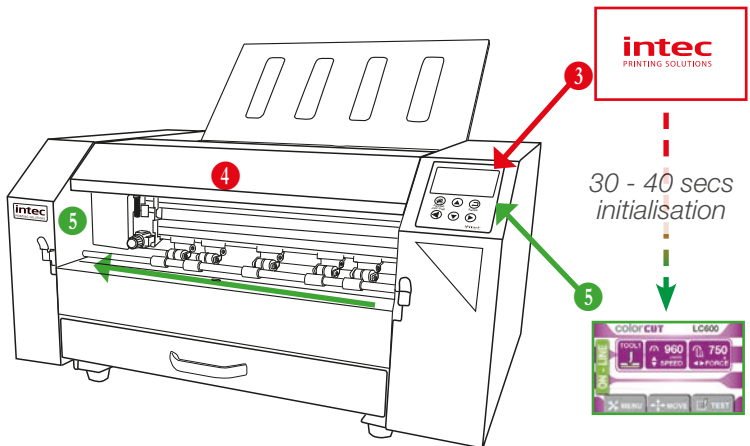
4.1 Turning the cutter on (The Initialisation Process)

1. Securely plug the power cord into the mains socket **1** on the rear panel and connect to an electrical outlet of the specified voltage



2. Turn on the power using the mains switch **2**.

3. The LCD Panel will illuminate and the Intec Logo will be displayed **3**, after approx 5 secs, the cutter will emit a beep sound and the tool carriage will move the far left position **5** (If not already in that position). The main control system will then boot, and the Wi-Fi function will initialise. After approx 35 -40 secs, the illumination strip under the front cover will illuminate **4** and the **HOME** screen will be displayed on the LCD panel **5**. Once the **HOME** screen is displayed on the LCD panel the cutter is Online and ready to use.



4.2 Connecting to your computer

The Intec ColorCut Pro software includes the USB drivers built into the software. There is no need to install any additional drivers.

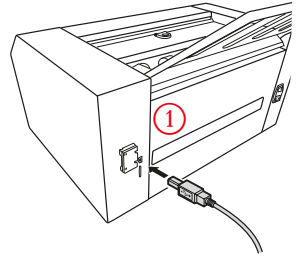


Please note, that operation can not be guaranteed in the following circumstances:

- 1) When connection is made through a USB hub or an add-on USB board.
- 2) When you are using a custom-built computer that has been modified

For optimal results, please ensure the following:

- Do not connect or disconnect the USB cable while you are installing the Intec ColorPro software.
- Do not connect or disconnect the USB cable while starting up the computer.
- Do not connect or disconnect the USB cable while switching on the cutter.
- Do not disconnect the USB cable within a 5 second period of connecting it. (It does not always recognise the fact it was subsequently disconnected and won't reconnect again until you power-cycle both devices)
- Do not disconnect or connect the USB cable while you are cutting a job, or while data is being transferred.




Securely plug the USB cable into the USB socket **1** on the rear panel and connect to your Windows PC.

4.3 ColorCut Pro - USB Connection confirmation

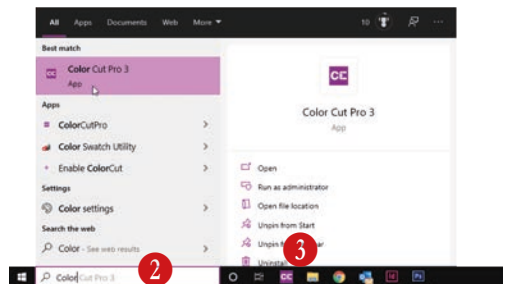
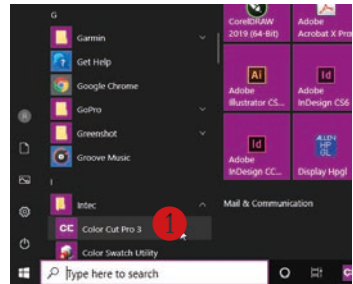
Launch ColorCut Pro, to check the cutter can be seen correctly.

To launch ColorCut Pro, use the method as described in section 3.4 (also detailed following)

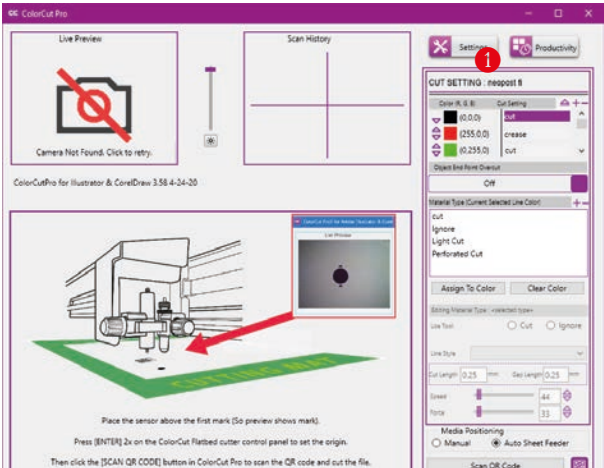
Use the Windows [START] menu, (or press the Windows key)  and select the [ColorCut Pro] icon from the Intec folder **1**.

Alternatively, type the first few letters of ColorCut Pro in the search bar **2**, to find the ColorCut Pro application.

You can PIN the ColorCut Pro application to the START bar, or quick launch taskbar **3** if required.



4.3 ColorCut Pro - USB Connection confirmation (Cont)



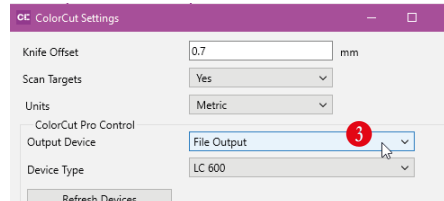
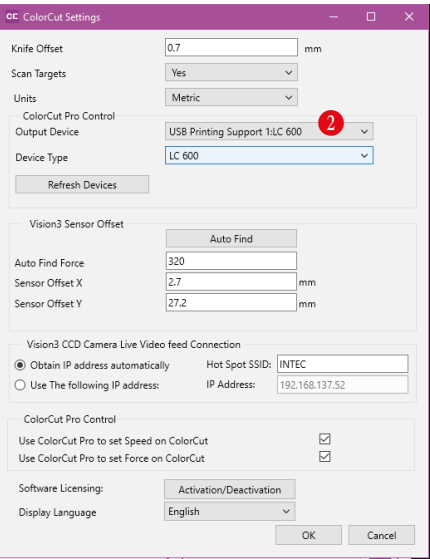
4) When the ColorCut Pro application launches, click on the **SETTINGS** button **1**.

The ColorCut Pro **[Settings]** dialogue box will appear. A number of options and settings can be viewed or changed here.

IF the connection to your cutter is successful then under the Output Device option **2** you will see the term USB Printing Support.

(After a short delay, the identifier 'LC600' may appear after the description 'USB Printing Support', however you don't need to wait for this, and this may take a few minutes to appear)

Alternatively, IF the **[OUTPUT DEVICE]** option shows, **[File Output]** **3** then the USB connection has not been recognised.

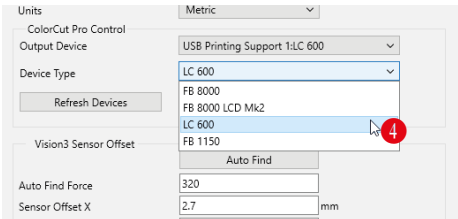


Switch off the cutter and wait 10 secs. Unplug the USB cable from your computer, and try a different port, then switch back on the ColorCut engine. Wait until the HOME screen is displayed on the LC600 LCD panel.

4.4 ColorCut Pro - Device Type

After confirming the USB connection is connected successfully, please ensure the **DEVICE** type is selected as **LC600** **4**. (This is not automatic, you need to select your cutter as LC600). Click [OK] to confirm and close the settings dialogue box.

Now continue to Step 5 (Tools).



Chapter 5

5.1 Types of cutter blades




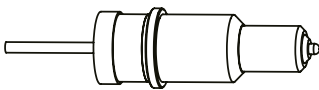
5.2 Blade Holder introduction

5.3 Replacing the blade

5.4 Blade length (Adjustment)

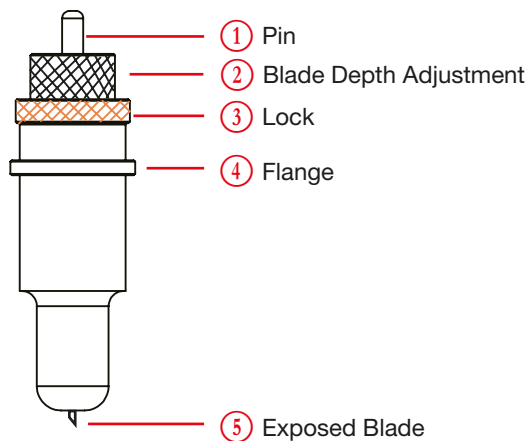
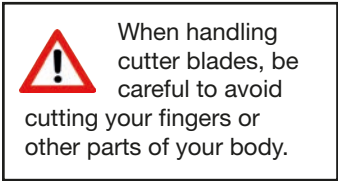
5.1 Cutter Blades (An overview of Blade types)

Your cutter comes with a selection of blades. The blades are packed in a foam packing material, in addition to this there is a colored rubber protective cap. The yellow caps indicate 30°, red caps indicate a 45° blade while the blue caps are 60° blades. Be careful when handling the blade as the cutting end is very sharp. Blades are selected for different applications, a guide is shown below:

Name	Image	Angle	Blade Diameter	Features and Application
Blade		30°	1mm	For Film, very soft material, thin label material.
		45°	1mm	Typically for labels, stickers, and thin paper/card,
		60°	1mm	For thick media. Suitable for Magnetic media or dense media like Metallic vinyl.
Pen Holder				Used at setup, to calibrate the offset between the Optical Registration Mark sensor (Red light) and the centre of Tool1 (The blade).

* Maximum cutting depth is defined by a combination of the material type (Density) and the blade (for label media, papers and card this is typically 350 microns)

5.2 The Blade Holder - an introduction



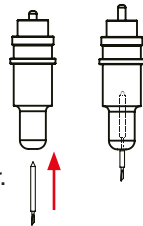
5.3 Replacing the blade

The blade is a consumable item, and you'll always get the best quality cut with a newer blade. Please replace with a new blade when the cut quality reduces.

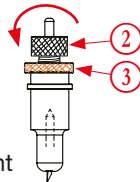
For Standard blades

(Without the cir-clip)

1. Push the blade into the bottom of the blade holder.



2. Adjust the amount of exposed (visible) blade tip to a suitable length by rotating ② the "Adjustment depth knob" and then tighten the lock ③.



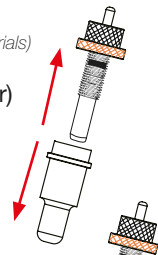
3. Press the push-pin ① to remove the blade from the blade holder when replacing blade



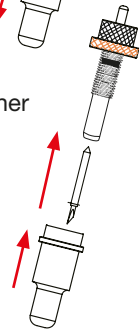
Alternative method

(Useful to clear dust with fibrous materials)

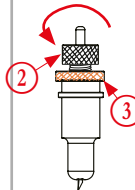
1. Unscrew the lower (cover) part of the blade holder.



2. Insert the blade into the inner blade holder. Then replace the outer cover of the blade holder;



3. Adjust the amount of exposed (visible) blade tip to a suitable length by rotating ② the "Adjustment depth knob" and then tighten the lock ③.



4. Replace the blade by following the steps above (or you can push the pin as you do with the standard method of replacing blades)

5.4 Blade Adjustment (Adjusting the Blade length)

Blade Depth is a major factor in how well the machine cuts and, along with the downforce/pressure, determines how cleanly the material cuts and easy or difficult it will be to weed the material. Too much blade depth is as bad as not enough.



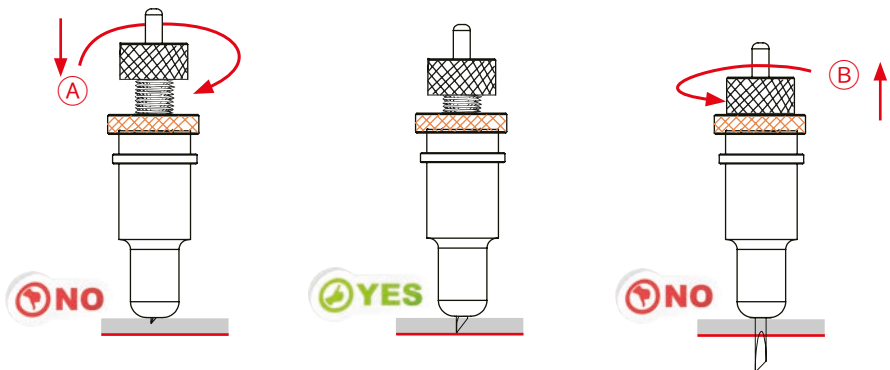
If you have enough blade sticking out to clearly see and feel the tip, it's probably too far out. Most new Intec LC600 cutter owners improperly install the blade with too much of it protruding from the holder. This may damage the cutting strip and mean, you will need to replace it earlier than normal. Ensure you set it so that you can barely see the tip.

Then take the blade holder and manually drag it across a sheet of label material that you wish to cut, making a box pattern or square.

Labels: Lay a scrap piece of material on a hard work surface (not on a nice table in case you cut through the backing). With the blade holder in your hand press down and cut a circle in the material. Press down using a moderate amount of force while you cut the circle. Adjust the blade length so that only traces of the blade appear on the backing sheet when a cutting test is performed. You will not be able to cut through the material backing when the blade depth is set correctly. If it cuts through the backing then the depth is too much (You have too much blade exposed) and you need to retract the blade.

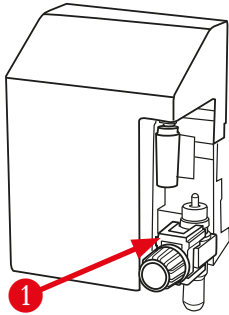
The blade length is adjusted by turning the blade adjustment knob.

- To extend the cutter blade, turn the knob in the (A) direction.
- To retract the cutter blade, turn the knob in the (B) direction.



5.5 Installing Tools in your ColorCut

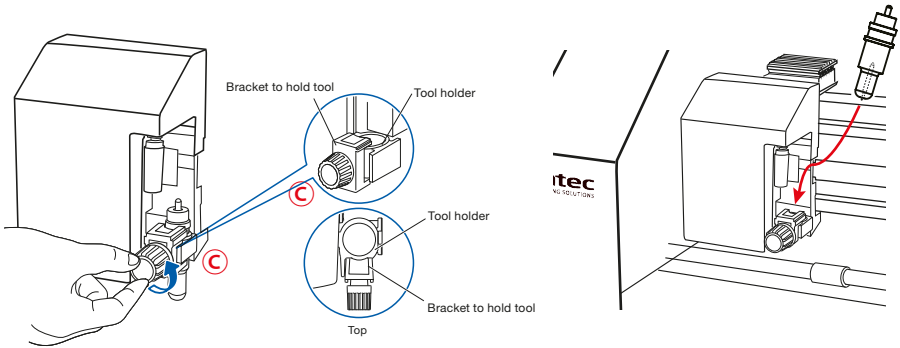
The tool carriage is mounted on the beam that travels across the cutting area.



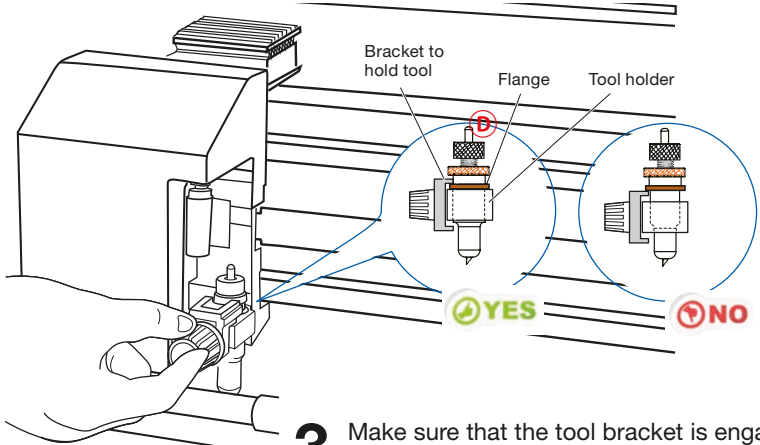
It contains a tool holder which enables you to easily and efficiently switch between different blade holders if required, or fit a pen for calibration purposes

The Tool Holder holds the item described as TOOL1, typically the cutting blade.

- 1.** To install a tool into your Intec ColorCut LC600, loosen the tool holder's thumb screw **(C)** sufficiently to enable a blade holder or calibration pen to be inserted up to its flange



- 2.** Push the tool, i.e. the Blade Holder or Calibration Pen all the way into the tool holder until its flange completely touches the upper part of the holder..



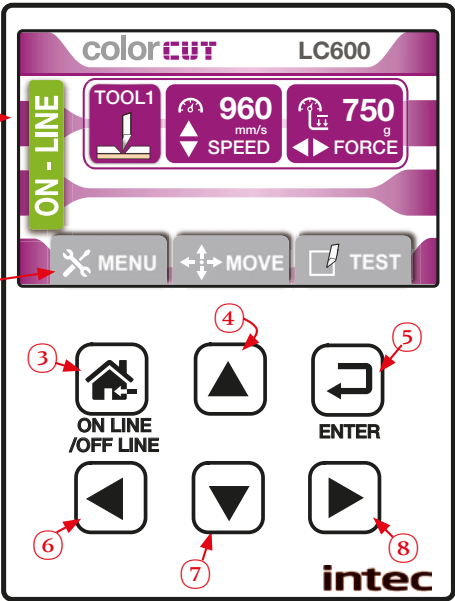
- 3.** Make sure that the tool bracket is engaged on top of the tool's flange **(D)**, and then tighten the screw.

6.1 Overview of control Panel

The Intec LC600 combines an intuitive 2.4" Color LCD "Touch" LCD panel, with 6 hard buttons to help you make selections and change values.

1 The 2.4" LCD Display 2.4" LCD panel is situated at the top of the Control panel, it displays information and menu parameters for each screen selected.

Pressing the light Grey TAB style buttons along the bottom of the LCD panel screen, enables users to enter the individual functions screens, the Hard buttons can be used in each screen.




The HOME screen

When the normal 'HOME' screen is displayed, the Speed and Force for the cutting control is displayed, and can be adjusted.


Please find below details of the function for each hard button.

- 3




(ONLINE/OFFLINE)

Places the cutter ONLINE ready to cut jobs. Pressing the button again, will take the cutter offline and jobs can not be sent.


In addition, when you scroll through the menu options, or setting the parameters. Pressing the [] (ONLINE/OFFLINE) key leaves the menu list and returns to the default home screen.

The default Online/Home screen displays: Tool : Speed & Force Plus access to the Menus/settings, Move and Test functions.
- 4




UP

INCREASES the cutting SPEED when HOME screen, is displayed. (Range 0 - 960mm/s)
- 5




ENTER

Pressing the [ENTER], button will accept the setting shown on the LCD panel when changing menu options.
- 6




LEFT

REDUCES the cutting FORCE when HOME screen, is displayed. (Range 0 - 760g)
- 7



DOWN

DECREASES the cutting SPEED when HOME screen, is displayed. (Range 0 - 960mm/s)
- 8



RIGHT

INCREASES the cutting FORCE when HOME screen, is displayed. (Range 0 - 760g)

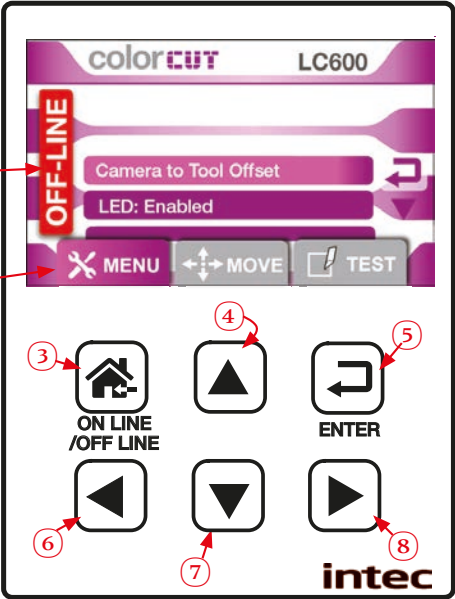
6.1 THE CONTROL PANEL (Cont.)

The MENU settings & options

The Menu screen allows you to check settings or change options on your Intec ColorCut LC600 cutter.

1 Press the **MENU** TAB, to select the menu screen. The **MENU** TAB changes color to a solid purple color, to show you have selected that option.

In the Menu mode, the cutter status changes to [OFF Line] 2 and will no longer receive new cutting files. When you have finished changing the menu settings press the [**ON-LINE**] 3 Key to return the cutter to the HOME screen, and change the LC600 cutter status back, to ONLINE.



When the main '**MENU**' screen is displayed, the options available will be displayed in the LCD panel screen. Press the **DOWN** arrow button 7 on the key pad to scroll down the list. Press the **UP** arrow button 4 on the key pad to scroll up the list.

If an Item displays the symbol next to it, this indicates you can press the **ENTER** key 5 to select the item to set the parameters.

If an Item displays the symbol next to it, this indicates you can toggle through the options by pressing the **LEFT** 6 or **RIGHT** arrow keys 8 to change the settings.

There are 2 MENU modes, **DEFAULT** which provides the typical settings required. And **ADVANCED**, which displays additional advanced settings which do not normally need to be changed. Each menu option is described later in this manual.

MENU MODE: DEFAULT		MENU MODE: ADVANCED	
CAMERA to TOOL OFFSET		CAMERA to TOOL OFFSET	
LED: Enabled / Disabled		LED: Enabled / Disabled	
Menu Mode: Default / Advanced		Menu Mode: Default / Advanced	
Firmware Ver: FW1.00.04		Firmware Ver: FW1.00.04	
		Scale Check & Calibration	
		Fan Setting: 1,2,3	
		Sensor Check	
		Reset To factory Defaults	

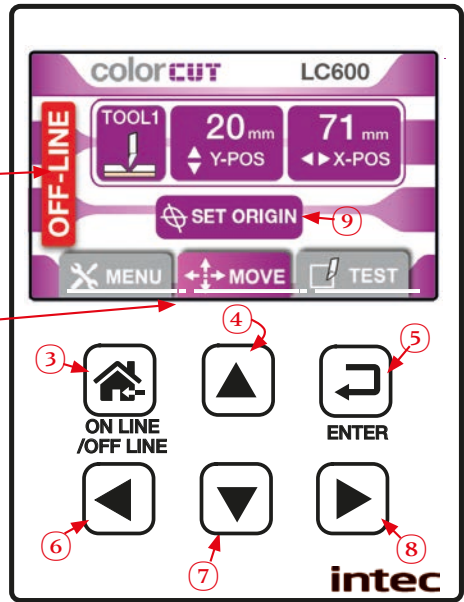
6.1 THE CONTROL PANEL (Cont.)

The MOVE screen

The MOVE screen allows you to the TOOL carriage and Feed the media feed rollers backwards or forwards on your Intec ColorCut LC600 cutter.

It is typically not required to use this feature UNLESS, you wish to manually load some media from the front and cut a manual job without any registration marks. You can use this screen to manually define the cut origin

1 Press the **MOVE** TAB, to select the menu screen. The **MOVE** TAB changes color to a solid purple color, to show you have selected that option.



In the MOVE mode, the cutter status changes to [OFF Line] 2 and will no longer receive new cutting files. When you have loading/ejecting media or moving the media tool carriage press the [ON-LINE] 3 Key to return the cutter to the HOME screen, and change the LC600 cutter status back, to ONLINE.

When the main 'MOVE' screen is displayed, press the [REVERSE] 4 arrow button on the key pad to 'REVERSE' the media feed rollers. You can use this to load a sheet of media from the FRONT of the cutter. Press the [FORWARD] 7 arrow button to advance any media loaded further forwards.

Pressing the [LEFT] 6 or [RIGHT] 8 arrow keys to move the tool carriage left or right across the media.

NOTE: The origin will be 2mm above the tip of the blade in the tool holder.

When you have placed the cutting tool where you want the cutting to commence press the [ORIGIN] button on the LCD panel.


Then press the [ENTER] 5 key twice (2x) symbol next to it, this confirms your **ORIGIN** selection. You can now press the [ON-LINE] 3 Key to return the cutter to the **HOME** screen.

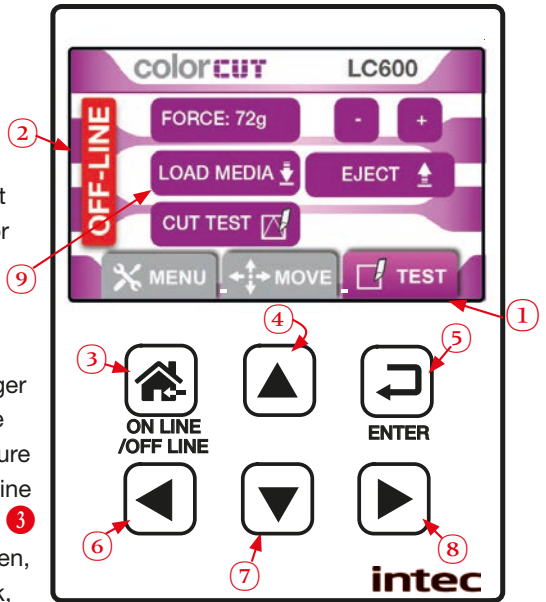
6.1 THE CONTROL PANEL (Cont.)

The TEST screen

The Test screen allows you to check your blade depth/force settings on your Intec ColorCut LC600 cutter.

1 Press the **TEST** TAB, to select the Test Cut screen. The **TEST** TAB changes color to a solid purple color, to show you have selected that option.

In the TEST CUT mode, the cutter status changes to [OFF Line] 2 and will no longer receive new cutting files. When you have adjusted your blade exposure and pressure correctly, [EJECT] any media in the machine the to finish, p ess the  [**ON-LINE**] 3 Key to return the cutter to the HOME screen, and change the LC600 cutter status back, to ONLINE.



The TEST screen is very useful for checking your blade depth and the pressure/force used during cutting, prior to starting a job.



After the Blade tool has been loaded, and you have manually adjusted the blade depth to a level you believe is correct. Load a sheet of your media, and perform a test cut, following the instructions below . Then adjust the blade and pressure accordingly. Adjusting the settings prior to a production saves time and eliminates waste.

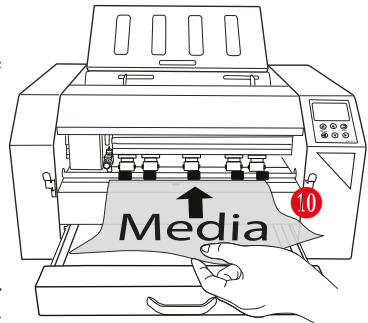
6.2 Checking the Blade depth & Force

A quick check and final adjustment of the blade depth & pressure can be made by loading a sheet of media in from the FRONT of the cutter (this enables you to leave a stack of media in the feeding tray).

1. Press [TEST] tab button on the LCD display. 1

2. Place a sheet of paper over the front paper sensor, and up to the Dual GRIP feed rollers at the front of the machine. 10

3. Press the [LOAD MEDIA] button 9 on the LCD panel.



6.2 Checking the Blade depth & Force (Cont.)

The media will be 'REVERSED' back, into the LC600 cutter, until the media lead edge passes the front paper sensor. The tool carriage will then move towards the right side of the media.

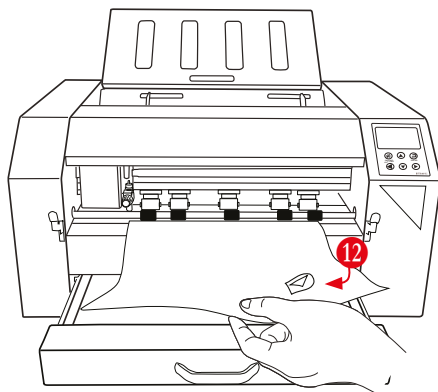
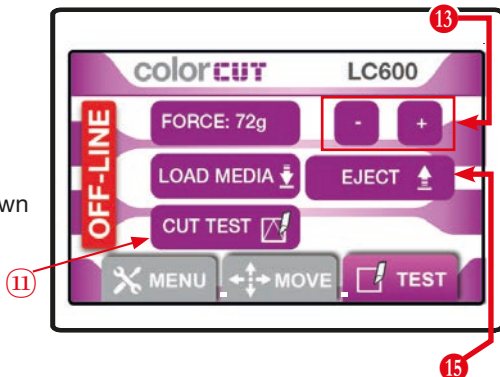
- 4.** Press [**CUT TEST**] button on the LCD display. **11**

The LC600 will now cut the shape shown below.



It will then feed the media FORWARDS so you can check the cut quality / depth and pressure. **12**


Adjust the [FORCE] using the [+] and [-] keys on the LCD panel **13** until you can cut through the top layer of your label material, and DO NOT cut through the liner (Base layer).

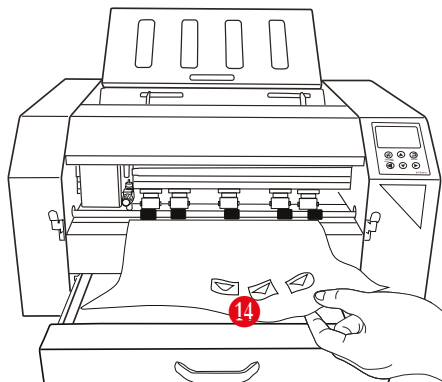


If you still cut through your media with a pressure <120g then it is likely you have too much blade exposed. STOP, remove the blade holder and reduce the blade amount exposed and then test again. If you can not cut through normal paper labels or polyester labels with a force >400g, then it is likely you may not have enough blade exposed.

NOTE: The maximum 760g is for metallic materials and vinyl's.

- 5.** Each time you press [**CUT TEST**] button on the LCD display. **11** The test cut shape automatically moves so it is cutting next to the previous test, for you. **14**

- 6.** When you have completed the test of your cutting pressure and blade depth, press the [**EJECT**] button **15** on the LCD display to eject the media. Then press the  [**ON-LINE**] **3** Key to return the cutter to the HOME screen, and change the LC600 cutter status back, to ONLINE.



6.3 Calibration the Vision3 sensor offset to the Cutting Blade

The Intec ColorCut LC600 engine includes a Vision3 sensor which is a 7th Generation ARMS system (AutoMatic Registration Mark Sensor). The Vision3 sensor uses a CCD camera to automatically detect registration marks, enabling accurate cutting and ColorCut Pro to adapt cutting lines and compensate for any scale or skew errors.

The Vision3 sensor is mounted **offset** to the cutting blade holder, so your ColorCut Pro application must be calibrated to compensate for the offset (distance) from the Sensor to the cutting blade.

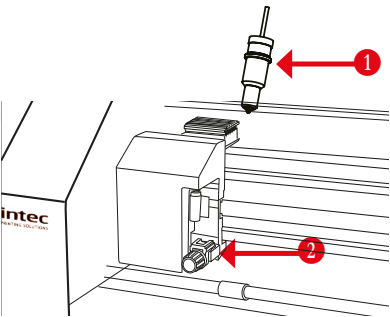


NOTE: The sensor offset value is stored within the software application, so if you plan to use multiple machines, you must set the sensor offset on each computer therefore, if you are using ColorCut Pro Job server, on a different computer as a production machine, you will need to set it on that machine also in order to cut accurately.

Calibrating the Vision3 camera offset is extremely easy, as the software will automatically do it for you (It can be done manually if you wanted to).

To use the AutoFind feature to set the Vision3 sensor offset, use the **PEN CALIBRATION TOOL**. The pen tool is used to draw a circle, the centre of which is used to define point of the cutter blade, then the Vision3 ARMS sensor reads the location of the circle and the software calculates the offset automatically for you.

- 1. Place the Calibration Pen Tool **1** In to Tool Holder 1 **2**. (Normally the position for the Blade Holder).
- 2. Set the appropriate pressure for the Calibration Pen Tool



(Not too much pressure or you may break the pen).

With the LCD panel showing the HOME screen, you will be able to see the values for TOOL1's SPEED and FORCE. If the screen below is not show, then press [**Home**] (ON-LINE) to display the HOME screen.

Use the Left / Right keys to set the Force. (to 160 g)

Speed is not important for this, but you don't want it too slow, or this will take a long time, so set the speed using the UP / DOWN keys to set the speed. (any value > 500mm/s)

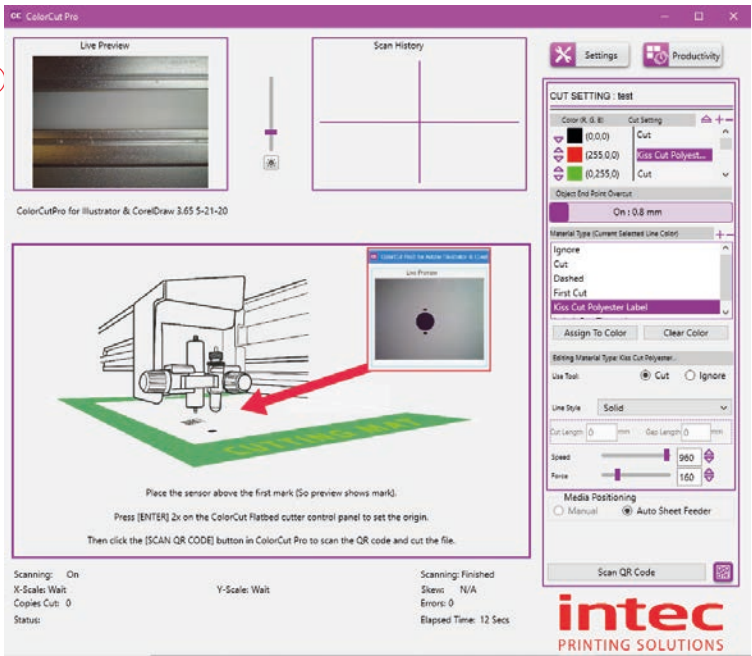
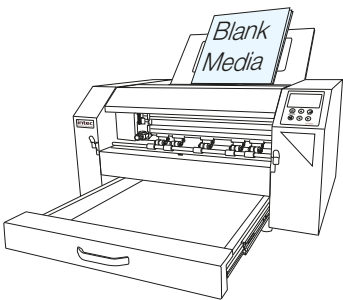


When finished press the [Enter] key to accept the settings,

Now follow the steps for your Software application: ColorCut Pro.

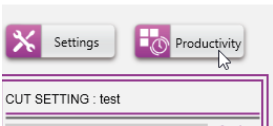
ColorCut Pro - Setting the Sensor Offset to the Blade

1. Load blank paper sheet(s) into the media tray .
Adjust the self centering side guides to the edges of the media. Ensure they are not too tight against the side of the media.
2. Start the Wi-Fi HotSpot on your computer (as described in Section 2 of this manual). Ensure 1 connected device appears (this will be the IP address of your cutter), in the HotSpot.
3. Launch the ColorCut Pro application from your computer.



If the LC600 is connected under the [SETTINGS] button, and your Wi-Fi HotSpot is active, you should see a preview of the Vison3's CCD camera in the 'Live Preview' window (A). If not check the Wi-Fi Hot Spot has a device connected, and that 'OBTAIN IP ADDRESS Automatically' is set under the [SETINGS]- live video connection option. Then restart the ColorCut Pro app.

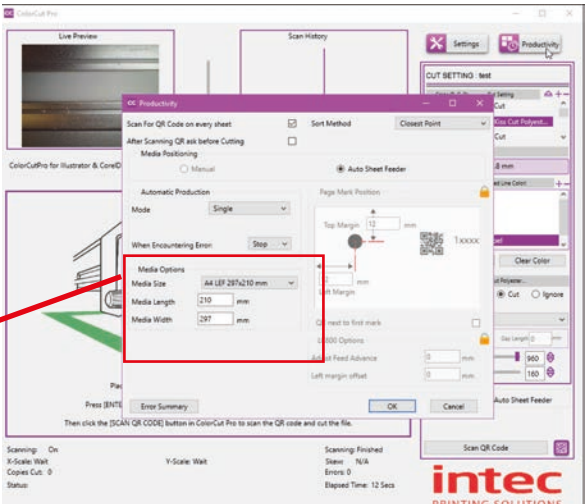
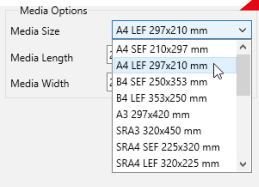
4. At the top of the ColorCut Pro window, click on the [PRODUCTIVITY] button to display the productivity window.



ColorCut Pro - Setting the Sensor Offset (Cont.)

5. From the **Media Options** click on the media size to match the paper size you placed in the feeder.

IF selecting A4, or US Letter, ensure you set **LEF** (Long Edge Fed), or **SEF** (Short Edge Feed) orientation. Then click [OK].



6. In the main ColorCut Pro application screen, click on the [SETTINGS] button.

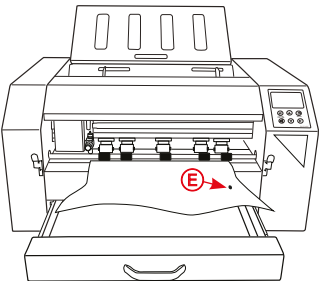
7. The ColorCut **Settings** dialogue box will appear. Here you can manually enter the Sensor offset (A) (B)

Or automatically set it by clicking the [AutoFind] button (C).

(The force used by the Calibration Pen, is manually set here (D), by default for you. >200 <320g this should not need to be changed)

7. Click the [AutoFind] button, you will be asked to place media in the cutter and click OK, then the Intec ColorCut LC600, will use the Pen Calibration Tool, to repeatedly draw a spiral pattern (E) to simulate a registration mark. it will then move the Vision3 sensor over to find the mark and automatically enter the values into your Sensor Offset X and Y settings. Once completed you will see a confirmation message

You can now close this window , the calibration for ColorCut Pro is now complete.



6.4 The Dual Grip Roller

The Intec ColorCut LC600 engine primarily grips and feeds the media using a 'PINCH' roller system situated behind the Tool Carriage position.

HOWEVER, to maximise cutting area, and to enable the LC600 to cut closer to the rear and front edge of your media, the LC600 is also supplied with a supplemental slave grip roller. This Front Roller, works as a SLAVE to the main roller and is known as the **Dual Grip Roller**.



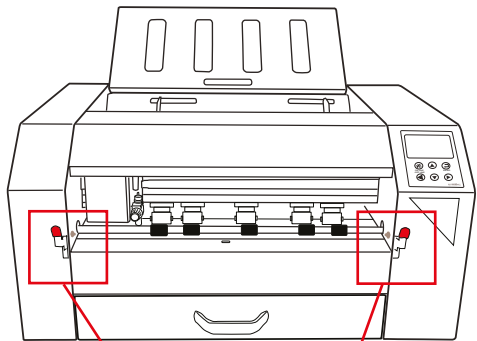
NOTE: The LC600 comes with the default Dual GRIP roller already fitted, this can be distinguished by the 5 rubber rollers on the shaft. Shipped in the exit tray, you can find the Narrow Grip Roller, this can be distinguished by 3 rubber rollers on the shaft.

In normal use it is NOT necessary to change the Dual Grip Roller. When using A4, or US LETTER media we recommend feeding these LEF (Long Edge First), so that all rubber rollers are in contact with the media. If you do this, then you will not normally need to change the dual grip roller.

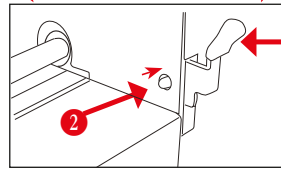
You should ONLY replace the standard Dual Grip Roller, with the Narrow Grip Roller, IF you consistently run media that is 260mm or narrower. Running narrow media can cause the outer rollers to wear unevenly. Therefore, replace the Standard Dual Grip roller, with the Narrow Dual Grip roller when running media that has a feed edge <260mm.

Changing the Dual Grip Roller

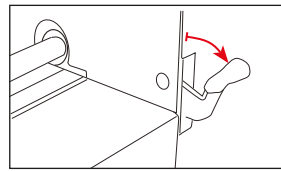
1. The Dual Grip front roller is held in place by the Dual Grip Clamps, these can be lifted using the Dual Grip Levers with RED covers at the front of the LC600 ❶.



2. Open the Dual Grip Lever clamps to remove the Dual Grip Roller. In order to release the Dual Grip Lever, press in the ball catch ❷ (You may find it easier to use the end of a pen to do this).

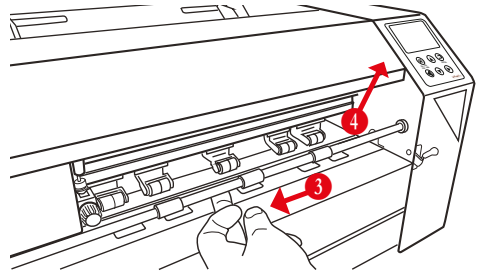


3. Once the Ball catch has been depressed, you can press the red catch down, to open the Dual Grip Roller clamps.



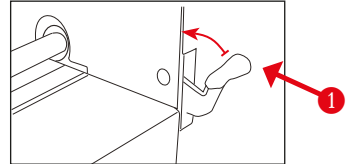
Changing the Dual Grip Roller

4. Having released the Dual Grip Levers you can move the Dual Grip bar towards the left **3** side (in to the LC600 chassis) and then diagonally up **4**.

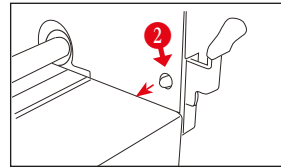


5. Replacing the Dual Grip Roller is the opposite procedure, diagonally fit the new bar towards the left and then down into position.

6. Finally close the Dual Grip Lever clamps **1** to secure the Dual Grip Roller.



The ball catch **2** will click back to secure the levers in place as you close the levers.



Please NOTE: The DUAL GRIP roller enables you to cut closer to end of the sheet than normally possible, however please be-aware the accuracy may decrease when sheets have PageMarks, or Cutting elements within the last 27mm of the sheet, as the sheet is now held by the dual grip rollers (the slave roller) and no longer held by the main drive rollers.



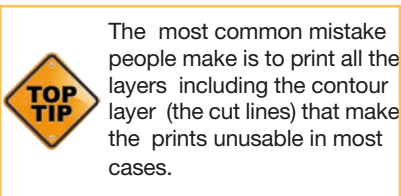
To achieve the highest cutting accuracy it is important that the sheet is held at all times by the main grip rollers particularly while scanning the PageMarks. Therefore, always ensure the rear / tailing edge registration PageMARKs are 25 - 30mm from the rear edge of the sheet. This will ensure during the scanning of the pagemarks, the sheet is retained at all times by the main grip rollers. When positioning PageMARKs in the last 25mm of the sheet there is a risk, the final marks will be read in a less accurate position and as a result scale or skew compensation can be incorrectly applied for the entire sheet. Please see the LC600 ColorCut Pro manual for tips and details about Graphic File Design and how to get the best results from your LC600.

Graphics File Design - Creating your Artwork

The ColorCut Pro Plug-in works directly from Adobe Illustrator or CorelDRAW. It requires the lines for cutting, perforating and creasing to be organised on a single layer. Therefore when designing with graphics you should organize the graphic design in different layers:

- **One or more layers for the main graphics (the printed artwork).**
- **One layer for the contour (the lines to be cut).**
- **PageMARKs, the marks that are used for Page Registration are automatically placed for you on a different (3rd) layer.**

Designing using layers makes life easier, because when printing you don't want to print the cutting lines or folding lines on your artwork. Equally, when sending cutting lines to the cutter, you don't want to confuse the cutter with lines that may be in your printed design. The layers feature enables you turn layers on or off as required. But in both cases, you need to have the registration marks available.



Similar commands are available in Adobe Illustrator and CorelDRAW to enable and disable the layers. In the pictures shown on this page there is an external frame to indicate the border of the sheet making it easier for you to see the page.

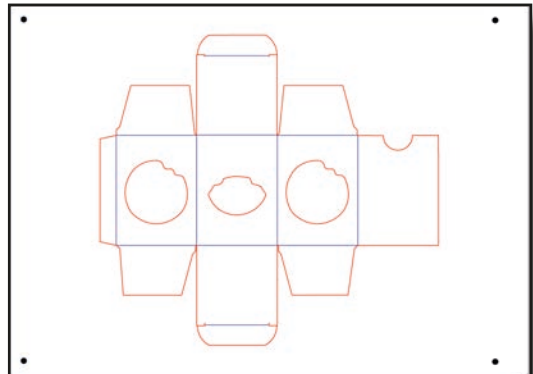
Note: This is for illustration purposes only.

Also please note: When you open some PDF format files directly in Adobe Illustrator or CorelDRAW, very often you may also find an external frame on the graphics. You will need to delete the external frame if it exists for the file to operate correctly with the ColorCut Pro software.

Graphics/Printing layer



Cut contour layer



Please now read the ColorCut Pro guide on how to design, and get the best out of your ColorCut pro software.

