

---

# ***ColorCut FB9500 Unpack and Installation Manual***



T09388A  
4 March 2025

---

---

**Warning:**

*This is a Class A product. In a domestic environment this product may cause radio interference in which case the user may be required to take adequate measures.*

---

NOTE: The domestic environment is an environment where the use of broadcast radio and television receivers may be expected within a distance of 10 m of the apparatus concerned.

---

## Introduction

Please read the Safety Information included with your shipment before using this machine. It contains information related to USER SAFETY and PREVENTING EQUIPMENT PROBLEMS.

## How to Read This Manual

### Notation Conventions

Whenever necessary, the following points for attention are indicated in this manual.

---

#### **Warning:**

*Indicates a potentially hazardous situation which, if instructions are not followed, could result in death or serious injury.*

---

---

#### **Caution:**

*Indicates a potentiality hazardous situation which, if instructions are not followed, may result in minor or moderate injury or damage to machine or property.*

---

NOTE: This refers to:

Remarks for making the operation much easier. You get practical hints or knowledge to assist you in the machine operation such as:

Preparations required before operating

How to prevent papers from being misfed or damaged

Precautions required or actions to take after misoperation

Limitations like numerical limits, functions that cannot be used together or conditions under which a particular function cannot be used or obtained.

Other General Information.

---

## Safety Information

When using this machine, the following safety precautions should always be followed.

### Safety During Operation

---

#### Warning:

- To avoid hazardous situations such as electric shock or danger while exposed to moving, rotating or cutting devices, do not remove any covers, guards or screws other than those specified in this manual.
  - Turn off the power and disconnect the power plug (by pulling the plug, not the cable) if any of the following conditions exist:
    - Before disassembling or assembling parts of the System and peripherals.
    - You drop objects or spill something into the equipment.
    - You suspect that your equipment needs service or repair.
    - Machine covers have been damaged
    - You notice unusual noises or odours when operating the equipment.
    - If the power cable or plug becomes worn out or otherwise damaged.
    - Before cleaning and care (unless otherwise specifically instructed).
  - If any adjustment or operation check has to be made with exterior covers off or open while the main switch is turned on, keep hand away from electrical or mechanically driven components.
  - Note that components of the System and peripherals can be supplied with electric voltage even if the main power switch is turned off and the power cord is disconnected.
  - Electromagnetic compliance:
    - This is a Class A product. In a domestic environment this product may cause radio interference in which case the user may be required to take adequate measures.
-



---

## General Safety

---

### Warning:

- Always connect the equipment to a properly grounded power source (wall outlet). Wall outlet should be located near the system and easily accessible. If in doubt, have the power source checked by a qualified electrician.
  - Improper grounding of the equipment can result in electrical shock. Never connect the machine to a power source that lacks a ground connection terminal. This machine is destined for specific purpose only. Any use going beyond this specific purpose is regarded as beyond the determination. The manufacturer will not be liable for damages resulting from any use beyond the determination, unallowed operation, respectively. The user alone bears the risk.
  - Do not make arbitrary changes or modifications to the machine. The manufacturer will not be liable for modifications made at the machine on your own and damages resulting thereof. CE declaration of conformity and the mark CE will be invalidated, if you make changes at the machine or to the individual components.
  - Do not override or bypass electrical or mechanical interlock devices.
  - The machine is to be used only by authorized and instructed persons. The responsibilities on operating the machine have to be strictly laid down and observed so that there are no unclear competencies regarding safety aspects.
  - Vent holes serve for air circulation to protect the machine from overheating. Make sure that the holes are not covered.
  - Do not expose fingers or other parts of the body to moving parts.
  - Always locate the equipment on a solid support surface with adequate strength for the weight of the machine.
  - This equipment is not suitable for use in locations where children are likely to be present.
  - This equipment is only intended for instructed and qualified operators.
  - Operators and technicians shall be familiar with the safety information in this manual and other safety information supplied with this equipment.
- 

Continued on next page.

---

## General Safety (continued)

---

### Caution:

- Always follow all warnings marked on, or supplied with, the equipment.
  - When you disconnect the power plug from the wall outlet, always pull the plug (not the cable).
  - While moving the machine, always exercise care and make sure that the power cord will not be damaged under the machine.
  - Do not move the machine while the machine is running.
  - Do not open covers while the machine is running.
  - Do not switch off the power while the machine is running. Make sure the machine cycle has ended.
  - Lay the power cord in a way that nobody will stumble over it. Do not place things on the cord.
  - Never attempt any maintenance function that is not specifically described in this documentation.
  - Always keep magnets and all devices with strong magnetic fields away from the machine.
  - If the place of installation is air-conditioned or heated, do not place the machine where it will be:
    - Subject to sudden temperature changes.
    - Directly exposed to cool air from an air-conditioner.
    - Directly exposed to heat from a heater.
  - If the machine is not used over an extended period of time it should be unplugged to prevent damage in the case of overload.
- 

### NOTE:

The indications like front and rear, left and right refer to the paper transport direction.

The operator manual always has to be available at the place of use of the machine.

In the interest of technical development the company reserves the right to make alterations to specifications without prior notice!

---

### Warning:

*Do not put fingers or other parts between moving parts.*

---

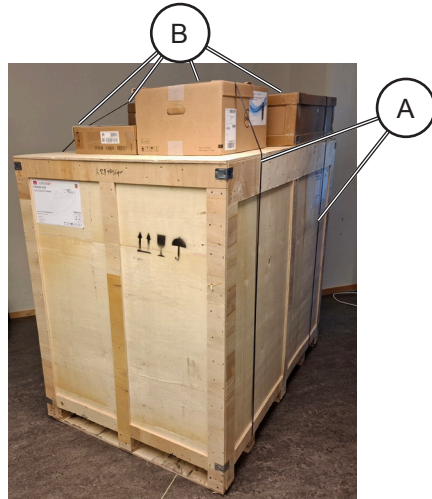
---

# 1 Unpack and Installation Instructions

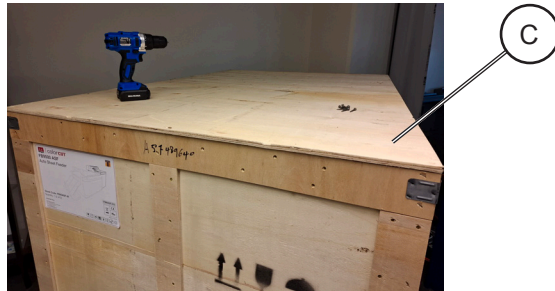
1.1	Unpack Instructions .....	1-2
1.1.1	Feeder.....	1-2
1.1.2	Cutter .....	1-5
1.2	Installation Requirements .....	1-7
1.2.1	Minimum space requirements .....	1-7
1.2.2	Power Requirements.....	1-8
1.2.3	Workstation Hardware Requirements .....	1-8
1.3	Installation Precautions.....	1-9
1.4	FB9500 Installation .....	1-10
1.4.1	Accessory check .....	1-10
1.4.2	Cutter preparation .....	1-11
1.4.3	Fuse replacement (if required) .....	1-13
1.4.4	Tool Carriage and Tools installation .....	1-14
1.5	Software installation.....	1-16
1.5.1	ColorCut Pro Installation .....	1-16
1.6	Connecting and powering on the cutter .....	1-20
1.6.1	Turning on the cutter .....	1-20
1.6.2	Connecting to computer .....	1-20
1.6.3	USB or Ethernet Connection confirmation .....	1-21
1.7	Checking the installation.....	1-22
1.7.1	Test Cut .....	1-22
1.7.2	Calibration of the Vision3 sensor offset to the Cutting Blade .....	1-23
1.7.3	Test cut using pen tool to calibrate Tool2 to Tool1 .....	1-25
1.7.4	Tangential Tool Calibration .....	1-25

## 1.1 Unpack Instructions

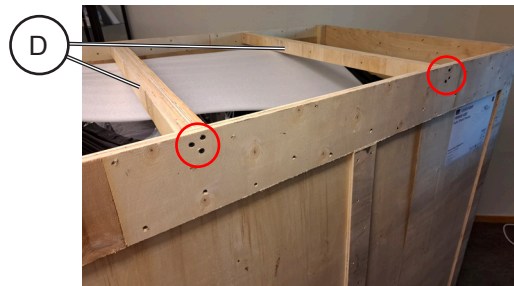
### 1.1.1 Feeder



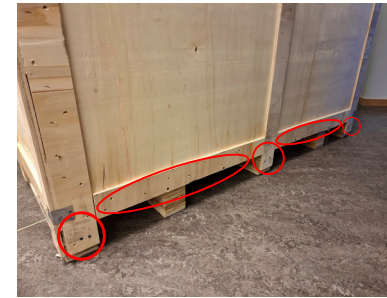
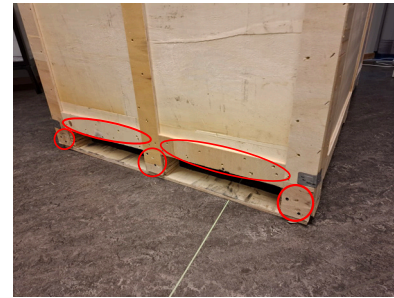
1. Remove the straps [A] and boxes [B] on top of the main crate.



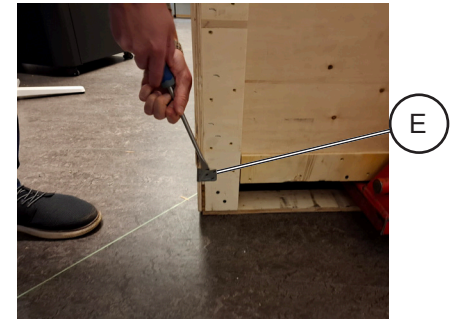
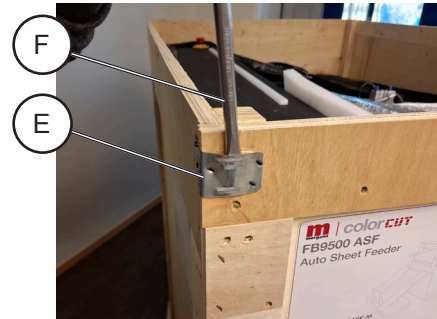
2. Remove the screws on top of the lid and remove the lid [C].



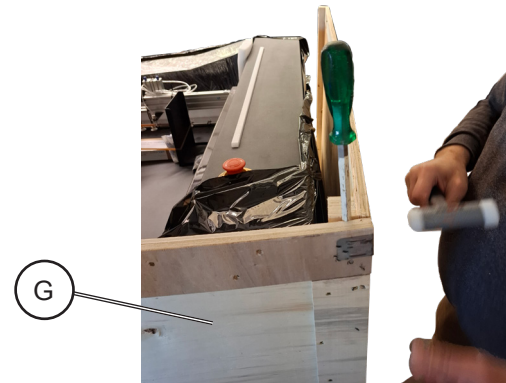
3. Remove the screws (12x) on each side of the crate and remove the crossbars [D].



4. Remove the screws along the bottom of the crate.



5. Using a screwdriver [F] remove the metal corner reinforcements [E] as shown in the picture.



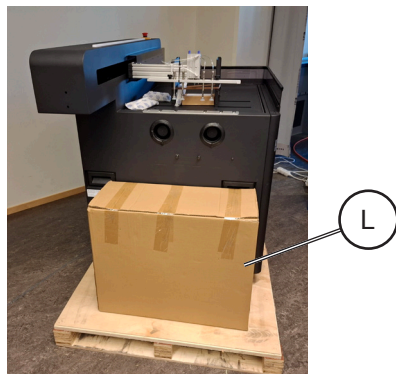
6. Use hammer/crowbar or large screwdriver as shown to pry open and remove the sides [G] of the crate.



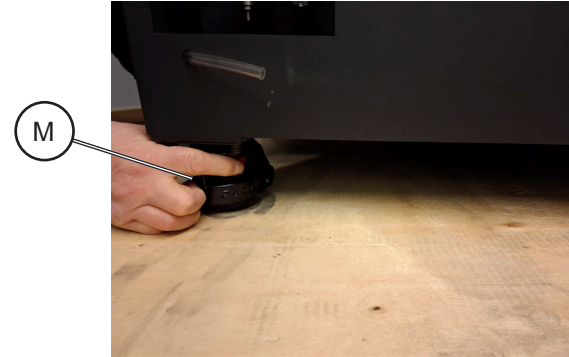
7. Remove the plastic wrap [H].



8. Remove stacker parts [I], accessories box [J] and styrofoam pieces [K].



9. Remove box containing the compressor [L].



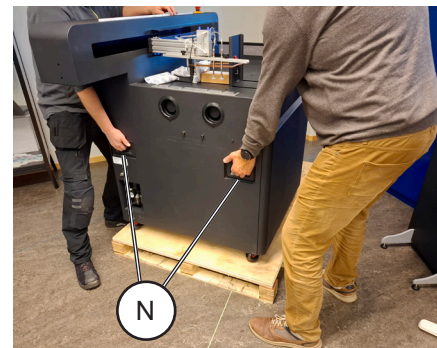
10. Lower the wheels (4x) [M] of the machine so the machine sits on wheels instead of feet.

**Caution:**

*It is recommended that minimum of three people carry out this task.*

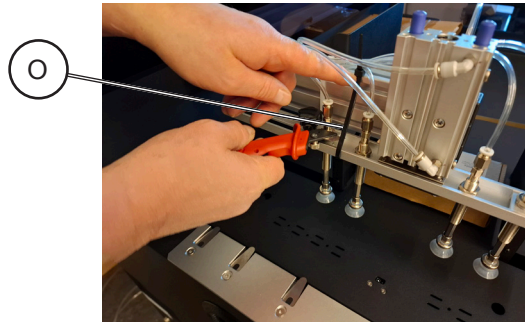
**Warning:**

*Do not lift the unit from the bottom, but use the handles [N] on the sides!*



11. Move machine to the edge of the pallet. Lift down one side of the machine. Then slightly lift up the other side of the machine and have an additional person pull out the pallet from beneath the feeder.





12. Cut security zip tie [O] on feeder head.



13. Open the back cover and cut security zip tie [P] on motor arm.



14. Unpack the compressor.



15. Unpack media stacker.

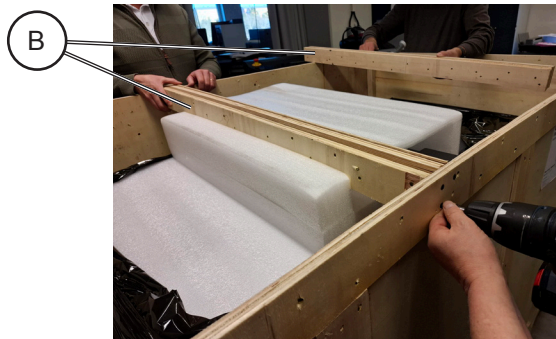


16. Retrieve the bag containing screws (4x) [Q].

## 1.1.2 Cutter



1. Remove the screws on top of the lid and remove the lid [A].



2. Remove the screws (12x) on each side of the crate and remove the crossbars (2x) [B].



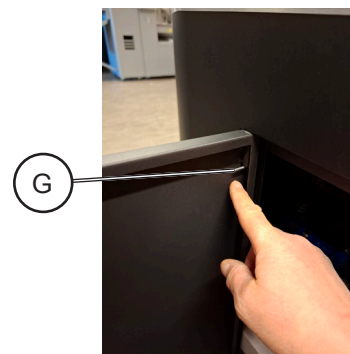
3. Use hammer/crowbar or large screwdriver to remove all side panels [C] as shown in images.



4. Remove top foam support [D].
5. Remove plastic wrap [E].



6. Remove remaining foam pieces [F].



7. Remove front doors by pushing down on the spring plunger [G] and lift out the door.





8. Remove back door [H].



9. Lower the wheels [I] to the pallet so the machine sits on wheels instead of feet.

**Caution:**

*It is recommended that minimum of three people carry out this task.*



10. Move machine to the edge of the pallet. Lift down one side of the machine then slightly lift up the other side of the machine and have an additional person pull out the pallet from beneath the feeder.

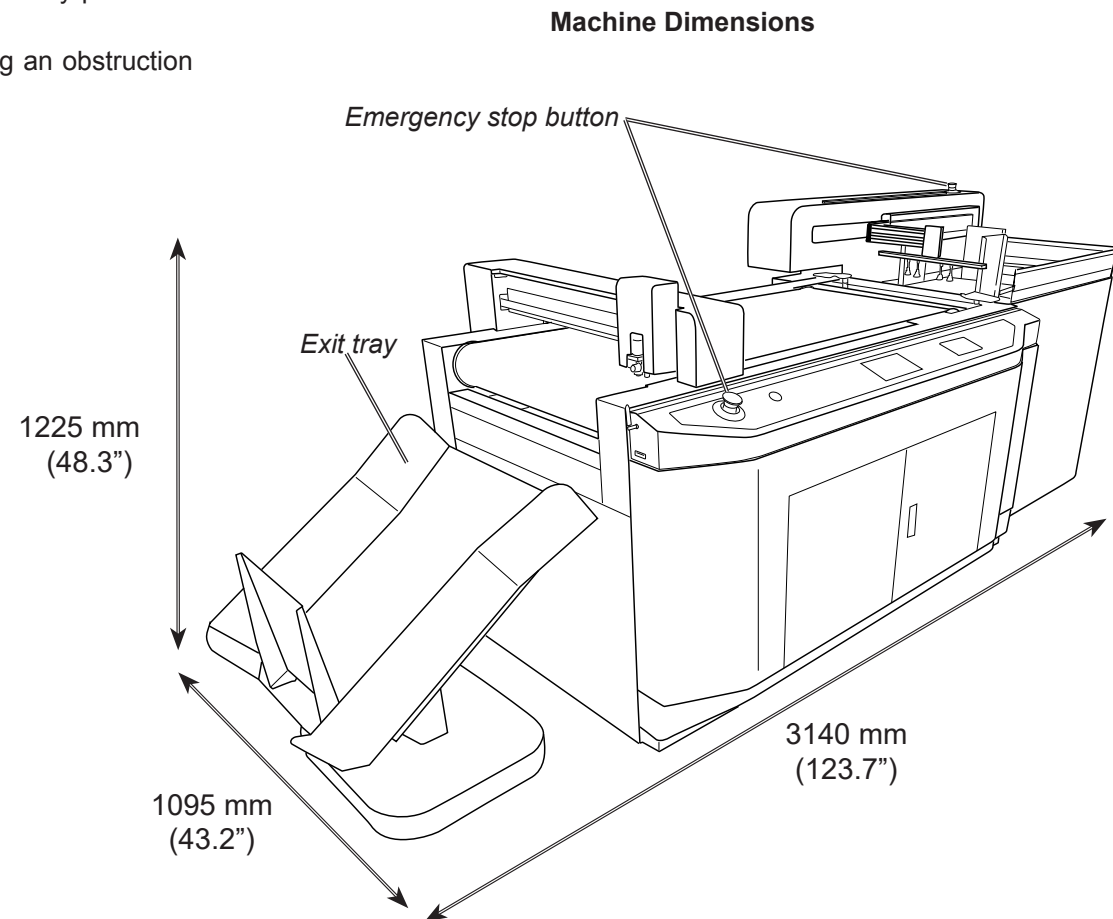
Intentionally blank



## 1.2 Installation Requirements

### 1.2.1 Minimum space requirements

1. Working Space is different than the Machine dimensions.
2. Ensure there is sufficient space at the rear of the FB9500 to easily load sheets and adjust the media side guides.
3. Ensure there is sufficient space above the FB9500 to easily press the Emergency Stop Switch in case of a problem.
4. Ensure there is space for the exit tray, without causing an obstruction to walkways.



### 1.2.2 Power Requirements

1. Ensure that a power outlet is available nearby the system, fused to withstand the system's combined rated current.
2. The current consumption can be seen on the machine labels. For example: if the machine label says "100-240 V, 3.4-1.7 A" then the rated current is 3.4 A at 100 V and 1.7 A at 240 V.
3. Make sure to route power cords to avoid people from tripping on them.
4. Avoid using excessively long extension cords.
5. Make sure the machine is grounded.

### 1.2.3 Workstation Hardware Requirements

#### Compatible Vector Programs

	Adobe Illustrator® *	Corel Draw® **
PC Windows	CS6; CC	X4 - X8
	CC 2014 - CC 2025	2017 - 2025
Mac OS	CC 2017 - CC 2025	

\*Does not support illegal copies of Adobe Illustrator

\*\*Full version only. Does not support "Home and Student", "Essentials" edition or illegal copies of CorelDRAW

1. Multicore Intel processor with 64-bit support
2. Windows 10 Professional / Windows 11 Professional x64 bit
3. 4 GB of RAM (8 GB recommended (As supplied with ColorCut Pro Server Station))
4. Minimum display resolution: 1024x900
5. Recommended Display Resolution: 1280x960 or higher.  
(Screens with resolutions such as: 1152x900, 1024x900, 1280x960, 1440x900, 1440x960, 1440x1024, 1440x1080, 1600x900, 1600x1080, 1600x1280, 1920x1080 or higher)
6. 2x available USB Ports (Note KB & Mouse often use a port each so factor this in)

#### Compatible OS Versions

PC Windows 10 Pro or 11 Pro – 64 bit

Mac OS version 10.11 (El Capitan) - Mac OS version 13 (Ventura)

## 1.3 Installation Precautions

### Safety measures

Please read the information and safety measures carefully prior to installation and initial operation of the unit.

- Do not place any magnetic objects in the vicinity of the cutting head; otherwise uniform contact pressure may not be ensured.
- Do not remove the connection cable to the computer while cutting is in progress.
- Relieve the pressure on the pressure rollers when not in use by moving the pressure lever up.
- Do not open or reach into the unit when it is connected to electricity supply.
- Never open the casing and do not make any modifications to the unit yourself.
- Ensure that neither liquids nor metal objects are put inside the FB9500.
- Ensure that the wall socket used is grounded.
- Ensure that the connected voltage (100-240V) does not deviate by more than  $\pm 10\%$ . Otherwise install a voltage stabiliser.
- Remove the power plug from the unit if it will not be in use for a longer period of time.
- Never reach into the unit in the vicinity of the blade holder during the cutting operation.
- Stop any cutting jobs in progress before re-adjusting the blade holder.
- Always ensure that the Auto Sheet Cutter remains inaccessible to children during operation and never leave the unit or individual parts of it switched on without supervision.
- Do not touch the tip of the cutting blade to avoid injury.
- Always place the unit on a stable base or use the supplied stand to prevent it from falling down.
- Disconnect from the power supply during thunderstorms; it can be damaged or destroyed by electrical surges caused by lightning.
- Do not sit or step on the stacker tray. Stacker will break or machine will tilt over. The maximum load for the stacker tray is 25 kg.
- Do not open covers while the machine is running.
- Do not move machine while the machine is running.
- Be cautious when the top lid is open. Prior to accessing the interior, always ensure that the cutter is turned off and disconnected from power supply.
- This equipment is not suitable for use in locations where children are likely to be present.

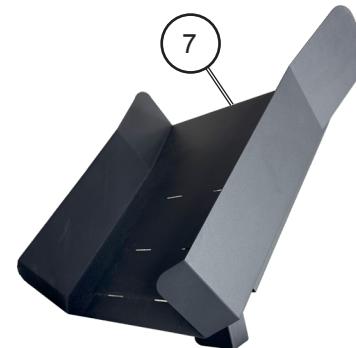
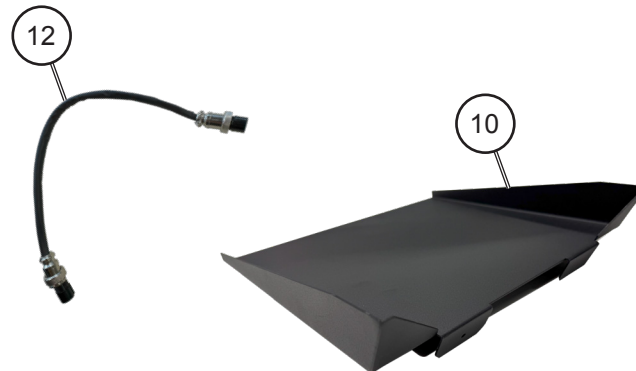
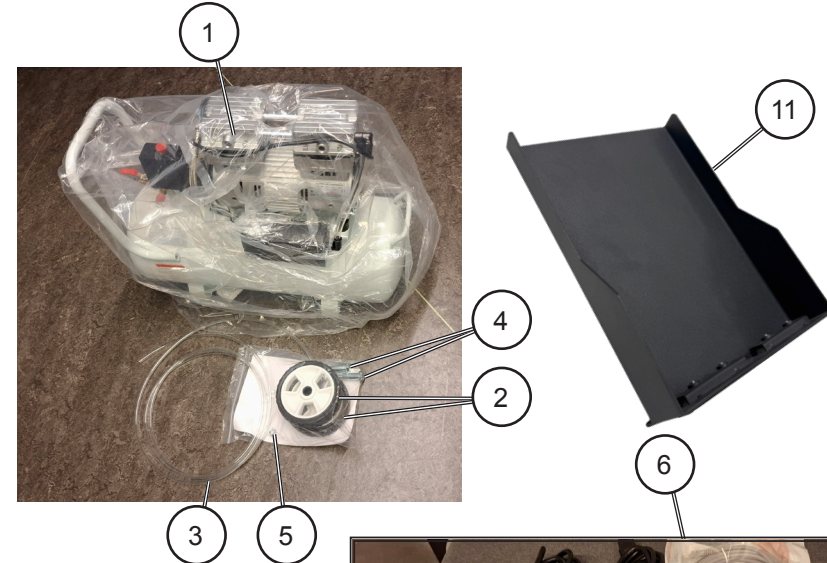
- Do not use emergency stop button for regular operation of the Cutter. The emergency stop button is designed for immediate stop solely for emergency situations to ensure the safety of all individuals involved. To reset the emergency stop button rotate it clockwise direction and pull it back upwards to its original position. The emergency stop button should only be reset after addressing and resolving the emergency condition that triggered its activation.



## 1.4 FB9500 Installation

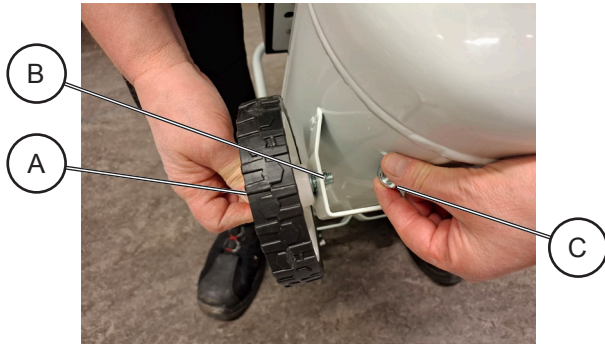
### 1.4.1 Accessory check

Item	Qty	Description
1	1	Compressor
2	2	Compressor Wheels
3	1	Compressor Air line
4	2	Compressor Wheel screw
5	2	Compressor Wheel nut
6	1	Accessory box (incl. USB storage device, USB Cable, Ethernet Cable, Power Cable, Calibration Pen Tool, Blade Holder, Blades, Allen key)
7	1	Media Stacker tray
8	1	Media Stacker base
9	1	Media Stacker screws
10	1	Media Stacker back stop
11	1	Feeder back stop weight
12	1	Connecting cable (feeder to cutter)





## 1.4.2 Cutter preparation



1. Install wheels (2x) [A] of the compressor by using screws (2x) [B] and nuts (2x) [C].



2. Connect air line [D] of the compressor with the feeder air coupling as shown in the picture.



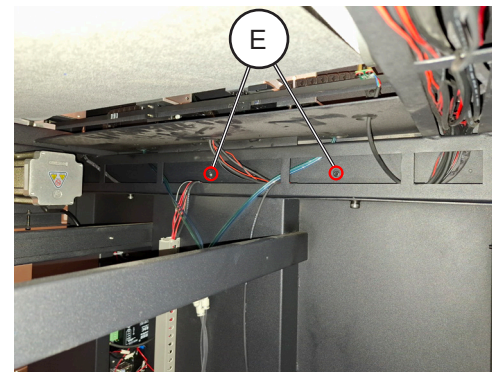
3. Push the Cutter and Feeder closer to each other.



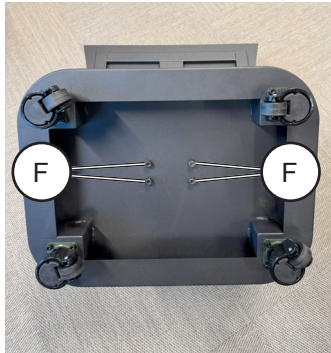
4. Remove screws (2x) [E] on the side of the feeder. Save screws for later use.



5. Align the Cutter with the Feeder, push them together.



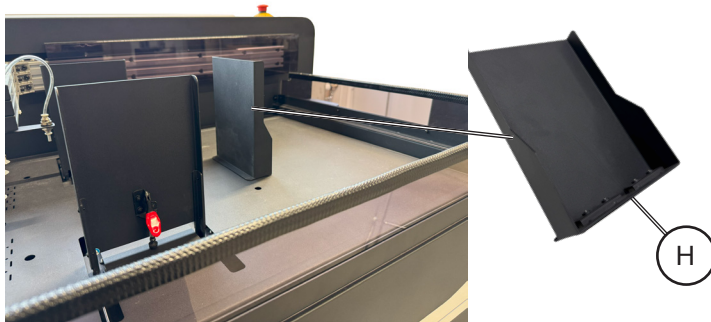
6. Use the screws (2x) [E] to secure the cutter to the feeder (from inside the cutter).



7. Retrieve parts for Media Stacker assembly. Attach the tray to the base using the retrieved screws (4x) [F]. Turn the assembly over with casters on the ground.



8. Retrieve back stop [G] from the accessory box and install it as shown.
9. Place the Media Stacker at the end of the cutting table.



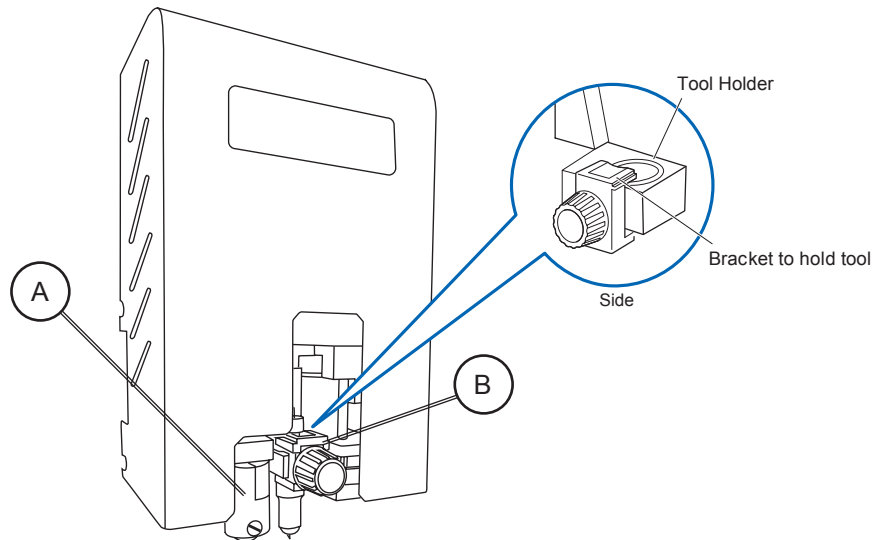
10. Retrieve back stop [H] weight from the accessory box and install it as a rear paper stack guide on the feeder.



11. Retrieve connecting cable [I] and install as shown in the picture.
12. Retrieve Feeder power cable [J] and plug the machine into the mains socket.

#### 1.4.4 Tool Carriage and Tools installation

The tool carriage is mounted on a bar, located at the front of your FB9500 cutter that spans across the cutting area. The Tool carriage contains two tool holders, each independently controllable. Each Tool holder enables you to install or switch easily and efficiently between a range of tools.

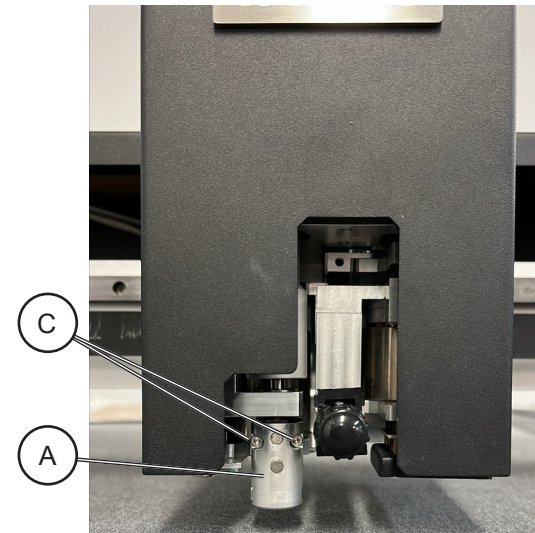


Tool Holder Position 1 [A] is for the Tangential Creasing tool. Tool Holder Position 2 [B] is for the blade holder / cutting blade.

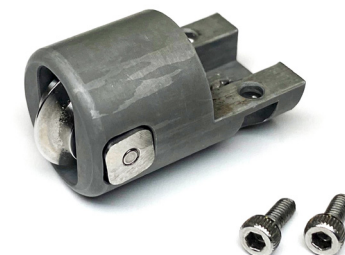
#### Tools installation

##### Tool position 1 - Tangential Creasing Wheel (Optional)

Note: The FB9500 comes pre-fitted with default 0.28 creasing wheel. It is possible to purchase and fit different wheel sizes onto the cutter. The following procedure describes how to change the pre-fitted wheel, if desired.



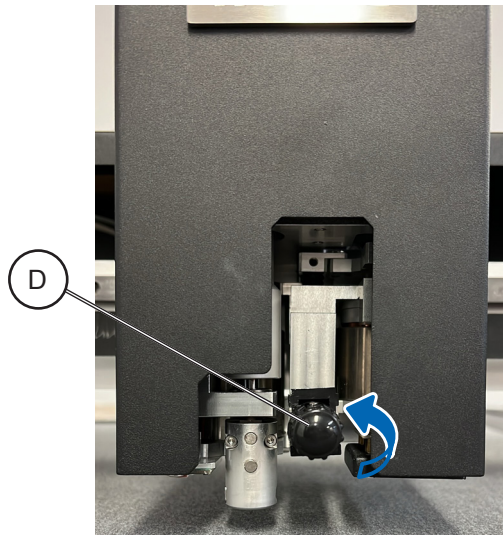
1. Remove screws [C] (2x) and remove Tangential creasing wheel [A].
2. Retrieve Tangential wheel holder with Tangential wheel replacement. Install with screws [C] (2x).



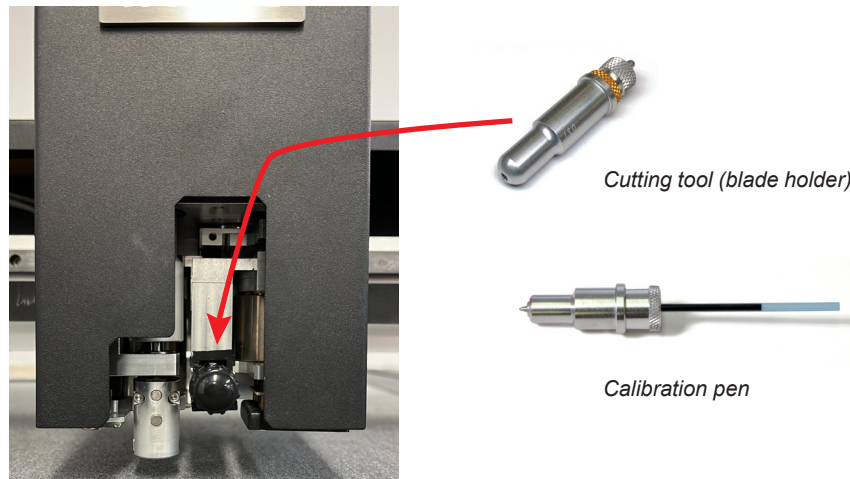
3. Perform Tangential Tool Calibration (Section 1.7.3).



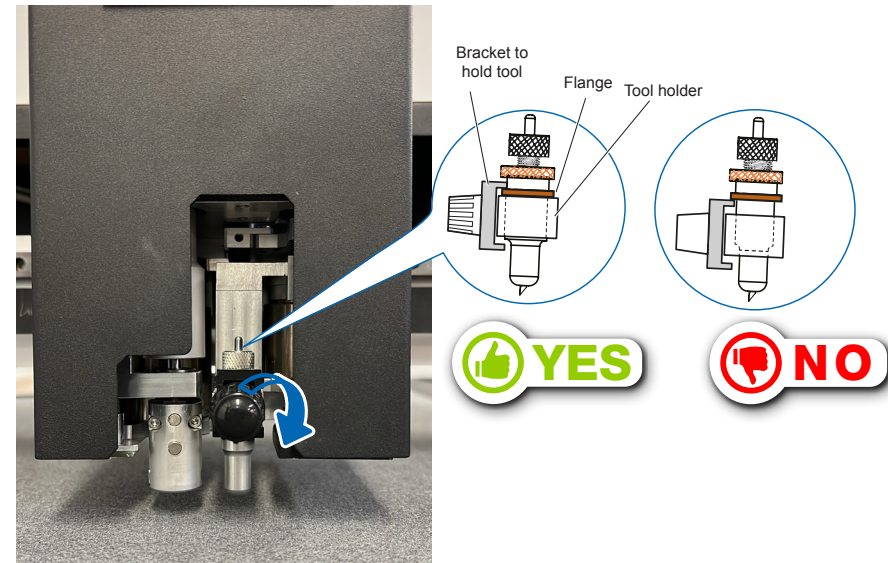
## Tool position 2 - Blade Holder



1. To install a tool into position 2 loosen the tool holder's thumb screw [D] sufficiently to enable a blade holder to be inserted in Tool position 2 up to its flange.



2. Push the Blade Holder or Calibration Pen all the way into the tool holder position 2 until the tools' flange completely touches the upper part of the holder.



3. Make sure that the tool bracket is engaged on top of the tool's flange, and then tighten the thumb screw.  
(If the Flange is above the bracket that holds the tool, the tool height will be incorrect and the tool may gradually move up during operation).

For detailed instructions on how to set the blade depth, please refer to Section 1 on Blade Adjustment of the Operator's Manual. The section provides step-by-step guidance to ensure blade adjustment for correct depth, preventing damage to materials or the cutter itself.



## 1.5 Software installation

The ColorCut Pro software is a professional cutting package that creates cutting files directly from Illustrator or CorelDRAW using the vector lines you have drawn. ColorCut Pro communicates directly with your cutter and ultimately cuts your jobs.

There are two installation versions of ColorCut Pro, a plug-in (which requires Adobe Illustrator® (MAC or PC) or CorelDRAW® (PC)) which creates the cutting jobs directly from your vector lines and can either send your jobs directly to the cutter (PC only) or create a cut file that can be retrieved at any time using a QR code (automatically added to the sheet) (MAC & PC clients) then users can cut a different computer (acting as a production server).

ColorCut Pro Software for your ColorCut Cutter is supplied on the included CD, however it may also be downloaded from Plockmatic Customer Center or scan the QR code provided to access MyFinisher website.



**Note:** ColorCut Pro requires a Minimum display resolution: 960×830.

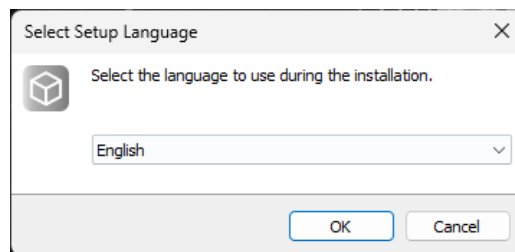
**Note:** If a Server Station is purchased, all Software will already be installed. Skip to Section 1.6.

### 1.5.1 ColorCut Pro Installation

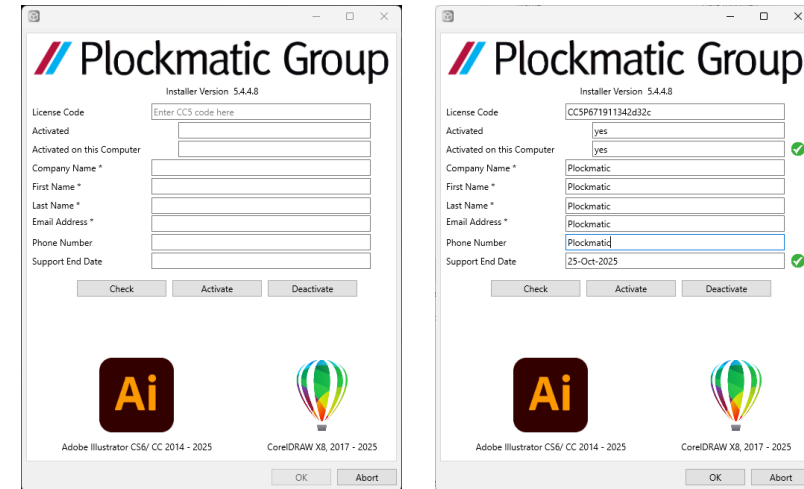
1. Run the installation program: SetupColorCutPro.exe

The setup program requires various confirmations for the installation of the program.

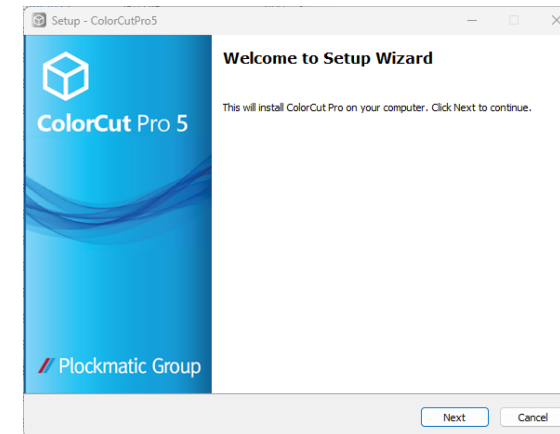
On some computers you could be asked the system administrator's password to execute the installation, in the case you do not have this information; contact the technician who administrates your system.



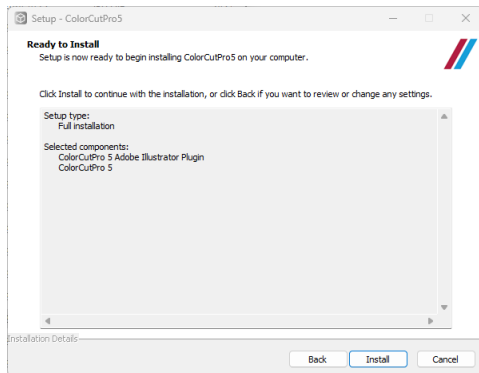
2. Select preferred language and click [OK] to proceed with installation.



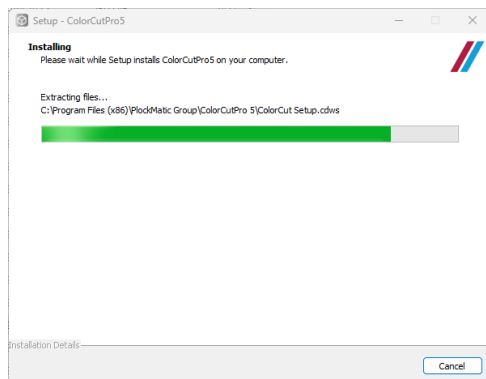
3. Enter the License code from the card supplied with your ColorCut Pro software and fill out your details. Click [Activate].



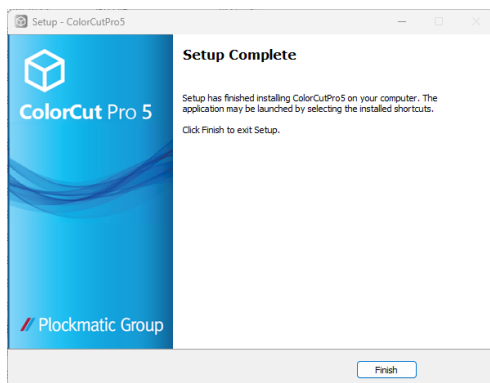
4. Click [Next] to proceed with ColorCut Pro installation.



5. Click [Install] to continue with the installation.



6. Wait until the installation is complete.



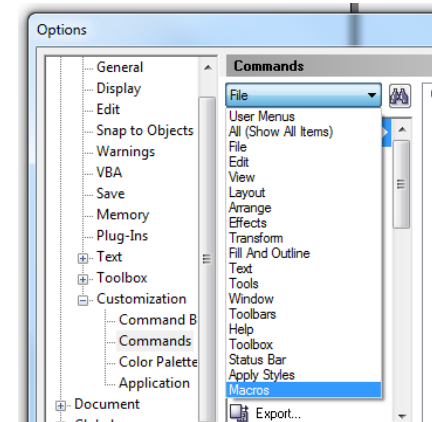
7. Click [Finish] to finalize installation.

## ColorCut Pro installation for CorelDraw

Skip this section if you have installed ColorCut Pro for Adobe Illustrator.

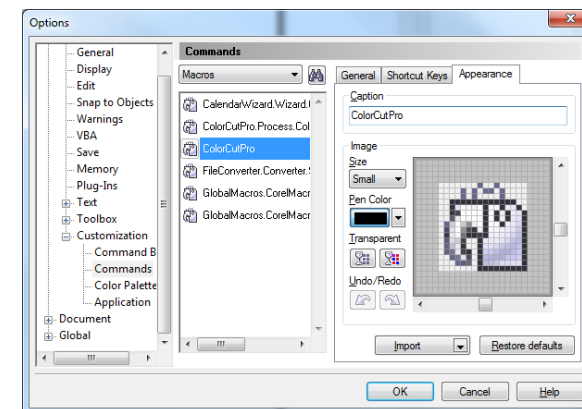
As part of the ColorCut Pro installation, the plug-in's to CorelDRAW are installed, however you need to add a shortcut into CorelDRAW.

1. Open CorelDRAW then click on the Tools menu, and select Options.
2. From the Options dialogue box, select: Customization and under this, click Commands
3. In the panel on the right, select macros from the drop down menu.
4. Select either:
  - colorcutpro.process.
  - colorcutproall
  - colorcutpro.process.colorcutpro

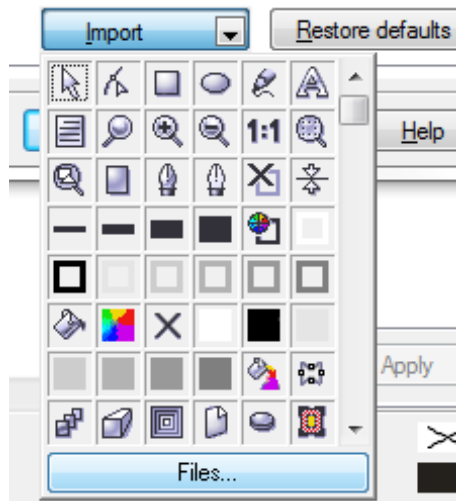


The 'colorcutpro.process.colorcutproall' version exports the entire drawing however the desired way to work is with layers

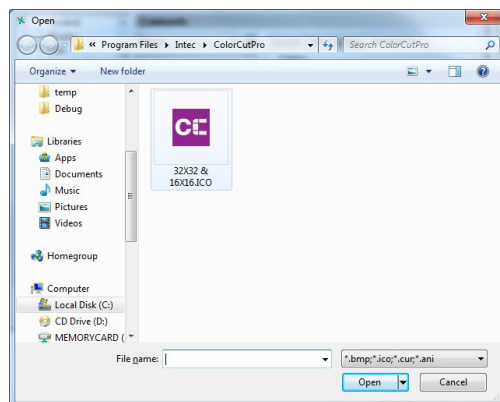
The 'colorcutpro.process.colorcutpro' version only exports the currently selected layer. Unless you want to export the entire drawing. If you are unsure, we recommend using the 'colorcutpro.process.colorcutpro' version.



5. On the appearance tab menu (Under caption), change the name to ColorCutPro. This is the name that will appear on the menu.



6. On Appearance tab, click [Import].
7. From the [Import] drop down, select [Files] at the bottom.

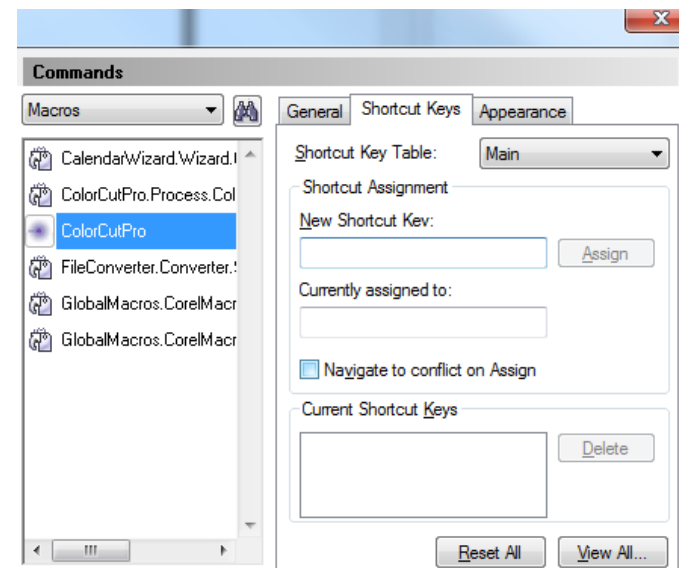


8. Navigate to:

For 32bit users of CorelDRAW	C:\Program Files (x86)\PlockMatic Group\ColorCutPro 5
For 64bit users of CorelDRAW	C:\Program Files\PlockMatic Group\ColorCutPro

and select the icon as shown.

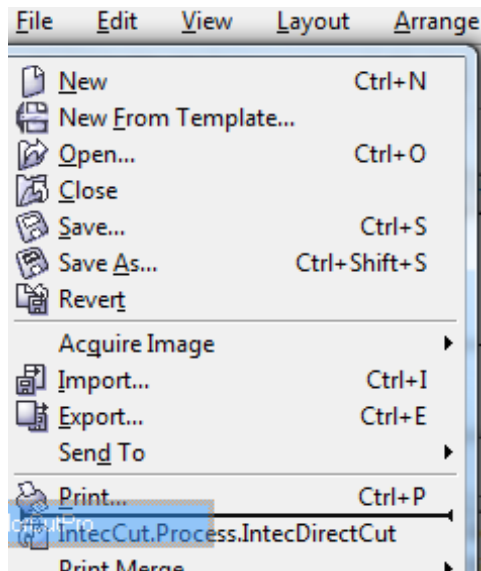
*The file path may alter.*



9. Open Shortcut Keys Tab. Place the mouse cursor at New Shortcut Key input field and click then hold down the Alt key and type C.



10. To add ColorCutPro icon to your tool bar click on the ColorCutPro Command from the Macro list, press and hold the left mouse button and drag the icon next to the printer icon on the tool bar and release.



11. To add the ColorCut Pro plug-in to your File Menu next to the Print item, press and hold on the Command name again at point, Click and hold the left mouse button and drag the icon until you position the mouse over File Menu, which will pop open the file drop-down menu.
12. Then move the mouse to next to the print button without releasing it and let go of the mouse button. You should now see the ColorCut Pro menu option appear.

Installation of CorelDRAW is now complete, continue on to the next section.

Intentionally blank

## 1.6 Connecting and powering on the cutter

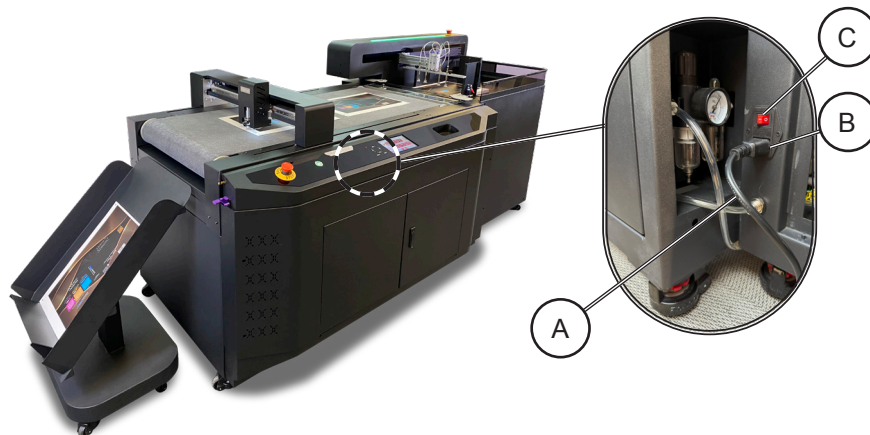
### 1.6.1 Turning on the cutter

**Warning:**

*Before connecting the machines to the power supply, make sure that each cover on each module has been reinstalled and that any part of the machine that was disassembled during installation was put back in place. Do not connect the machines to the power supply if covers are off or if any module is (even partially) disassembled. Make sure you use a proper grounded plug in the wall outlet. Never plug in the module to a non-grounded plug.*

**Warning:**

*Before turning on the machines, make sure that each cover on each module has been replaced and that any part of the machine that was disassembled during installation was put back in place. Do not turn the machines on if covers are off or if any module is (even partially) disassembled.*



1. Securely plug the power cord [A] into the mains socket [B] on the rear panel and connect to an electrical outlet of the specified voltage.
2. Turn on the power using the mains switch [C].
3. After the Warning screen appears on the LCD panel, press the Enter key. This action will prompt the cutter head to automatically return to its Home position. Once it reaches the Home position, the cutter will be in an Online state, fully prepared and ready for use.

### 1.6.2 Connecting to computer

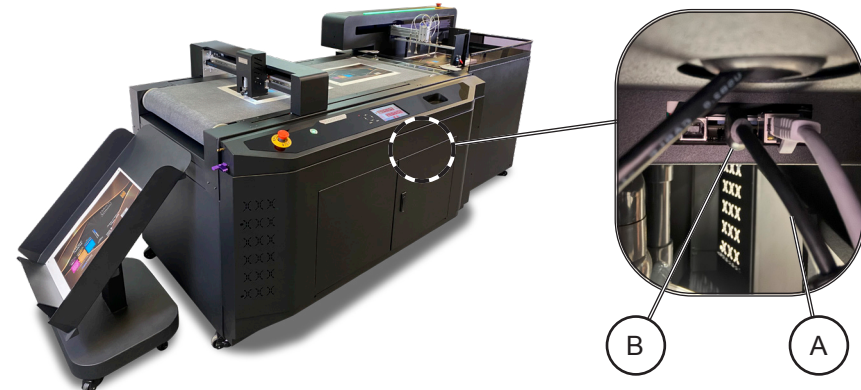
The ColorCut Pro software includes the USB and Ethernet drivers built into the software. There is no need to install any addition drivers.

**Note:** Operation can not be guaranteed in the following circumstances:

- 1) When connection is made through a USB hub or an add-on USB board.
- 2) When you are using a custom-built computer that has been modified.

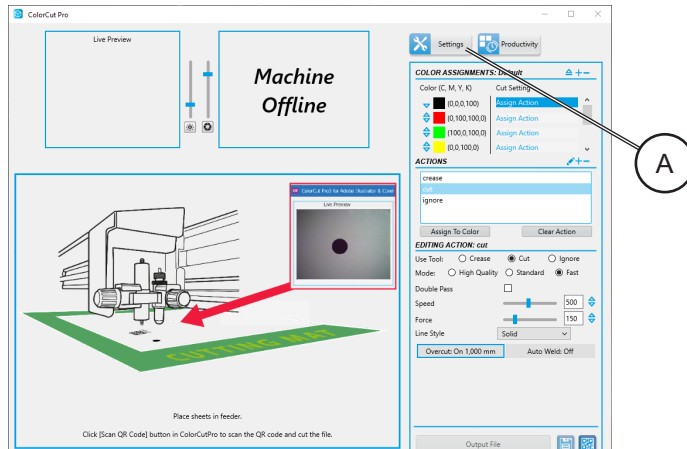
For optimal results, please ensure the following:

- Do not connect or disconnect the USB/Ethernet cable while you are installing the Color Cut Pro software.
- Do not connect or disconnect the USB/Ethernet cable while starting up the computer.
- Do not connect or disconnect the USB/Ethernet cable while switching on the cutter.
- Do not disconnect the USB/Ethernet cable within a 5 second period of connecting it. (It does not always recognise the fact it was subsequently disconnected and won't reconnect again until you power-cycle both devices)
- Do not disconnect or connect the USB/Ethernet cable while you are cutting a job, or while data is being transferred.

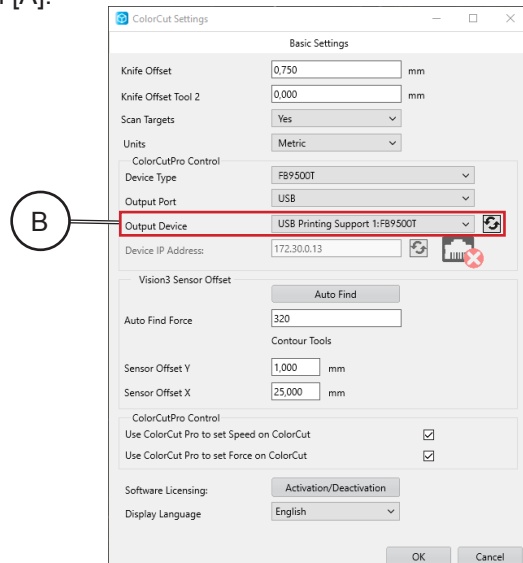


1. Open the front doors of the cutter.
2. Plug the USB cable [A] into the USB socket [B] located under the UI and connect to your Windows PC; or plug the Ethernet cable into the socket on the rear panel and connect to your Ethernet socket.

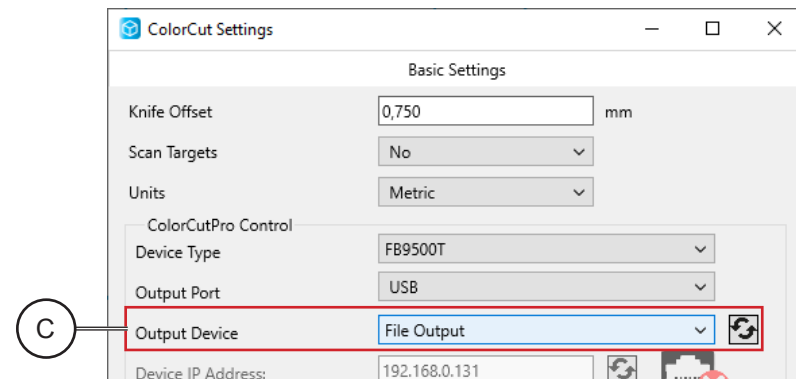
## 1.6.3 USB or Ethernet Connection confirmation



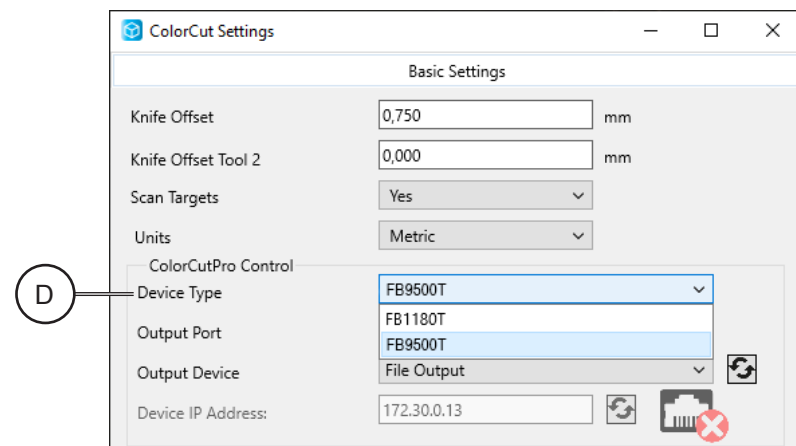
1. Launch ColorCut Pro.
2. When the ColorCut Pro application launches, click on the Settings button [A].



3. The ColorCut Pro Settings dialogue box will appear.
4. If the connection to your cutter is successful then under the Output Device option you will see the term 'USB Printing Support: x', where 'x' is your cutter type, or 'Ethernet Direct connect'[B].



5. If the Output Device shows, [File Output] then the connection has not been successful [C]. Switch off the cutter and wait 10 sec. Unplug the USB cable from your computer, and try a different port, then switch back on the ColorCut engine. Wait until the Home screen is displayed on the FB9500 LCD panel. Repeat steps 1 to 4.



6. After confirming successful connection, select Device Type FB9500 from drop-down menu [D].
7. Click [OK] to confirm and close the settings dialogue box.



## 1.7 Checking the installation

### 1.7.1 Test Cut

The Test Cut function allows you to check your blade depth/force settings on your ColorCut FB9500 cutter and perform calibration of Align Tool2 to Tool1.

Note: The Test screen is very useful for checking your blade depth and the pressure/force used during cutting, prior to starting a job.

After the Blade tool has been loaded and you have manually adjusted the blade depth to a level you believe is correct. Load a sheet of your media, and perform a test cut, following the instructions below. Then adjust the blade and pressure accordingly. Checking and adjusting the settings for your specific media prior to a production saves time and eliminates waste.

#### Performing a Test Cut to check depth/force:

1. Place a blank sheet of paper centred on the flatbed.
2. Turn on the vacuum fan.



3. Make sure the carriage is positioned over a clear area of the media with approximately 25 mm of space (1") available in either direction around the test Blade Tool's position.
4. If there is not enough clear space then, press the [MOVE] tab button on the display:
  - Press the Up/Down arrow buttons on the key pad to move the media feed rollers (Which will move media backwards (+Y) / forwards (-Y)).
  - Press the Left/Right arrow buttons on the key pad to move the tool carriage across the media in +X or -X directions.



5. Press "Set Origin" on the Main screen.

#### Caution:

*If you set the wrong tool type (for example, if you select a passive tool type when no passive tool is fitted), the Tangential Tool may not rotate correctly. This can cause the tool to drag across the material, damaging both the material and the blade. You will need to replace the blade and re-calibrate the system, so be careful.*

6. Press [TEST CUT] button. The FB9500 will draw a Diamond Shape using Tool1 (The creasing tool) and cut a Square around the Diamond shape using Tool2 (The blade) depending on which tool has been loaded.
7. Check the cut quality/depth and pressure. If you are cutting through the media (Die-Cutting), remember the least amount of blade possible will provide the best result.

Note: The minimum level of exposed blade will provide the best quality on sharp inverted turns and extend your cutting strip life. Too much Blade, will result in the Blade cutting through your media and cutting into the cutting strip. This will reduce your blade life, create poor quality cutting on sharp inverted turns and damage the cutting strip reducing the cutting strip life.

8. Check the test cut on sheet. If the cut depth is not sufficient or it is too excessive, select the appropriate tool (e.g., Tool2) and adjust the force using the Left and Right arrow keys on the panel until the material cuts correctly.

Result	Action
Cuts through card with pressure < 220 g (0.49 lb)	Too much blade exposed. Remove blade holder, reduce blade exposure, and test again.
Cannot cut through card with pressure > 450 g (0.99 lb)	Not enough blade exposed. Increase blade exposure and test again.

9. Use the following guidelines to adjust blade exposure based on the cut results:

**Note:** Cutting pressures higher than 450 g (0.99 lb) may be used for metallic materials, PET and vinyl's.

10. When new settings are applied, repeat the test cut until the desired cut is achieved. There is no need to move the carriage while performing a new test cut since the carriage will shift to the left side each time a new test cut is performed.

For detailed instructions on how to set the blade depth, please refer to Section 1 on Blade Adjustment of the Operator's Manual. The section provides step-by-step guidance to ensure blade adjustment for correct depth, preventing damage to materials or the cutter itself.

### 1.7.2 Calibration of the Vision3 sensor offset to the Cutting Blade

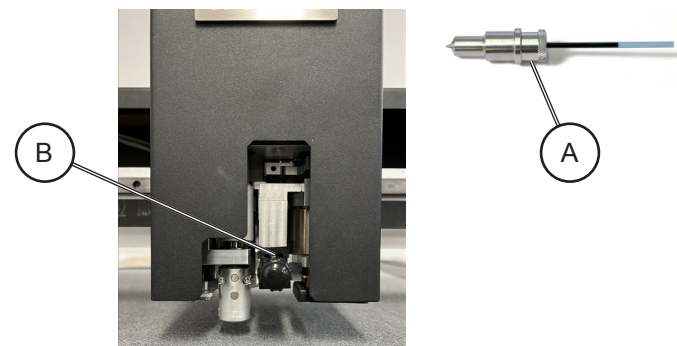
The ColorCut FB9500 engine includes a Vision3 sensor which is an 8th Generation ARMS system (Automatic Registration Mark Sensor). The Vision3 sensor uses a CCD camera to automatically detect registration marks, the position of the registration marks on your sheet allows ColorCut Pro to compensate for any scale or skew errors and adapt cutting lines enabling highly accurate cutting to elements printed on the media.

The Vision3 sensor is mounted offset to the cutting blade holder, so your ColorCut Pro application must be calibrated to compensate for the offset (distance) from the Sensor to the cutting blade.

**Note:** The sensor offset value is stored within the software application, so if you plan to use multiple machines, you must set the sensor offset on each computer therefore, if you are using ColorCut Pro Job server, on a different computer as a production machine, you will need to set it on that machine also in order to cut accurately.

Calibrating the Vision3 camera offset is done by the software automatically. (It can be done manually if you want to).

To use the AutoFind feature to set the Vision3 sensor offset, use the Pen Calibration Tool [A]. The pen tool is used to draw a circle, the centre of which is used to define to point of the cutter blade, then the Vision3 ARMS sensor reads the location of the circle and the software calculates the offset automatically.



1. Place the Calibration Pen Tool [A] in to Tool Holder 2 [B].

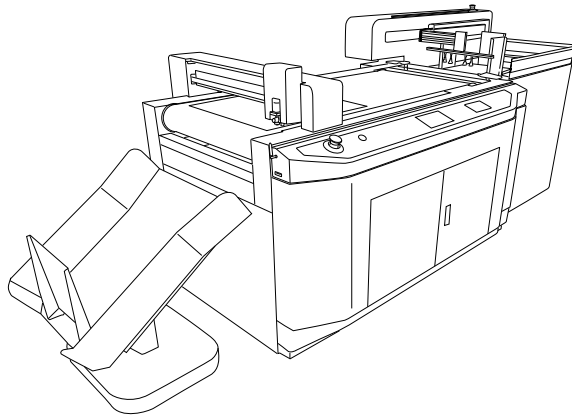


2. Set/Check the appropriate pressure for the Calibration Pen Tool. (Not too much pressure or you may break the pen).

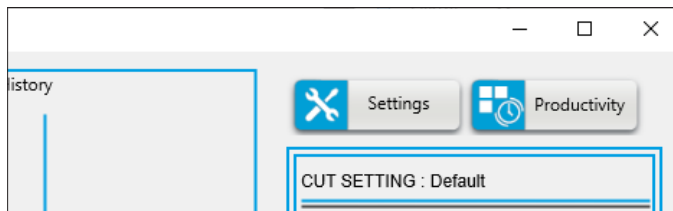
Check the AutoFind Force [I] pressure is set to between 200 - 320 gms of pressure.

Recommended pressure is 220 gms. For very thin paper it should be reduced.

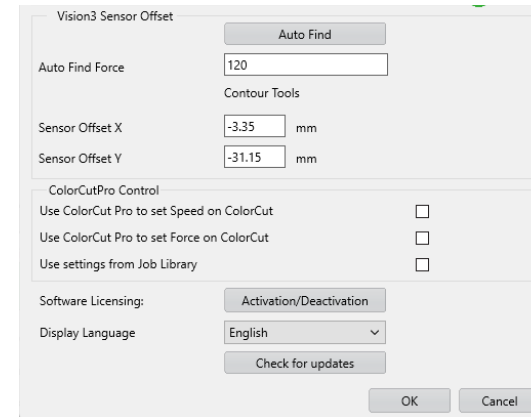
**Note:** Too little pressure and the pen will not write.



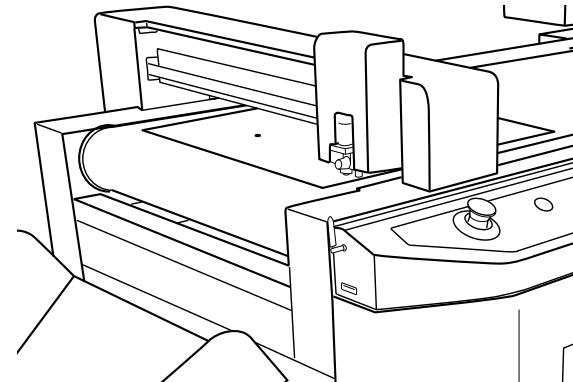
3. Place a blank sheet of paper on the cutting table. Use sheet placement assistant for easier access.
4. Connect cutter to network using either Wi-Fi, Ethernet or USB.
5. Launch the ColorCut Pro application from your computer.



6. In the main ColorCut Pro application screen, click on the [Settings] button. The settings dialogue box will appear.



7. Click the [Auto Find] button, a message will appear asking to place a sheet of media on the cutting table, click [OK].

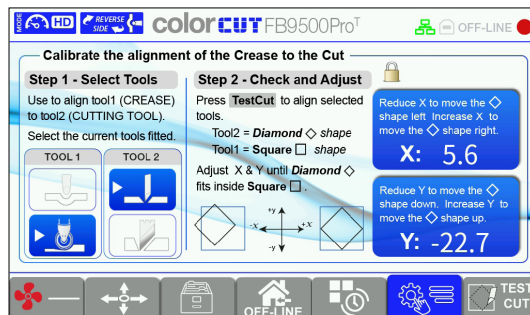


8. The cutter will use the Pen Calibration Tool, to repeatedly draw a spiral pattern to simulate a registration mark. It will then move the Vision3 sensor over to find the mark and automatically enter the values into your Sensor Offset X and Y settings. Once completed you will see a confirmation message.
9. You can now close this window, the calibration for ColorCut Pro is now complete.

**Note:** If you do not set the X and Y Sensor offset values (either using the Auto Find function - or manually) then the cutter will not cut accurately. Please ensure you have done this. However, this setup is per computer, and once done, should not need to be repeated.

### 1.7.3 Test cut using pen tool to calibrate Tool2 to Tool1

1. Retrieve calibration pen tool from accessory kit and install it in Tool holder 2;
2. Repeat steps 1 to 4 from 'Performing a Test Cut to check depth/force';
3. Press [Test Cut]. The FB9500 will draw a Diamond Shape using Tool1 and a Square around the Diamond shape using Tool2;
4. Check the alignment of the drawn shapes. Evaluate if the Diamond is in the middle of the square;
5. If the shapes does not align, on LCD panel enter Settings and Options menu and open 'Calibrate the Tool2 to Tool1' calibration screen.



6. Using arrow buttons on key pad adjust the coordinates of the Diamond shape:
  - Press the Up/Down arrow buttons on the key pad to move the diamond shape up (+Y) or down (-Y).
  - Press the Left/Right arrow buttons on the key pad to move the diamond shape right (+X) or left (-X).
7. To apply new settings, press [ENTER] on key pad, repeat the test cut and evaluate the alignment of both shapes. Repeat procedure until the desired alignment is achieved (Diamond fits inside the square).

### 1.7.4 Tangential Tool Calibration

The Tangential Tool Calibration allows you to check rotation of Tangential Tool and perform calibration of the tool after replacement to compensate for alignment issues.

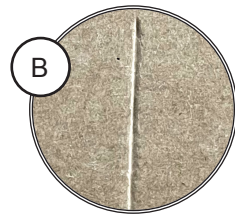
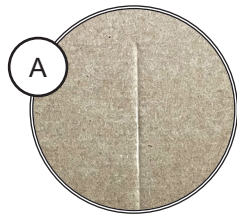
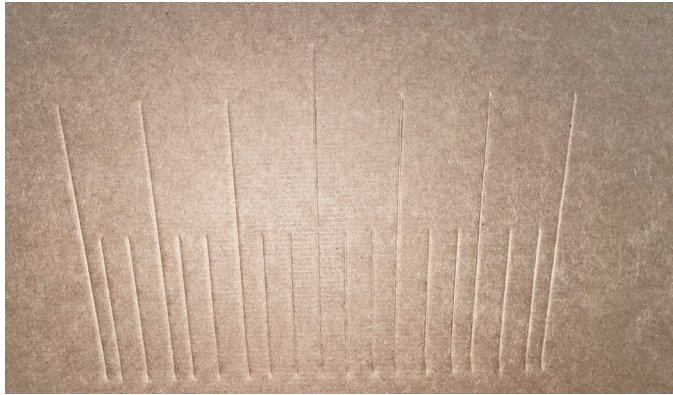
1. Place a blank sheet of media on the cutting table.
2. Turn on the vacuum table.
3. Move the carriage over media.



4. Press "Set Origin" on the Main screen.



5. Enter the settings menu and navigate to Tangential Tool Calibration.
6. Press the [RUN] button.



7. Look at the tip of the crease [A] among the drawn lines. The center line should be an even point, not offset to either side.
8. If the middle line appears without any tearing [A], the wheel is calibrated correctly.
9. If tearing is visible on the middle line [B], search for the line with the least deformities among all drawn lines.
10. Adjust the value using the keypad's left and right arrows so it is according to the line with least deformities.
11. Press [Apply Calibration] and rerun the test by pressing [RUN].
12. Perform steps 6 to 11 until satisfied with the performance.

Intentionally blank