

---

# **ColorCut FB1190<sup>T</sup>**

## **Unpack and Installation Instructions**

**Doc number: T09400A**

**Date: 20 March 2026**

---

---

**Warning:**

*This is a Class A product. In a domestic environment this product may cause radio interference in which case the user may be required to take adequate measures.*

*The product (System) which is connected to this machine will be class A*

---

Note: The domestic environment is an environment where the use of broadcast radio and television receivers may be expected within a distance of 10 m of the apparatus concerned.

---

## Introduction

Please read the Safety Information before using this machine. It contains information related to USER SAFETY and PREVENTING EQUIPMENT PROBLEMS.

## How to Read This Manual

### Notation Conventions

Whenever necessary, the following points for attention are indicated in this manual.

---

**Warning:**

*Indicates a potentially hazardous situation which, if instructions are not followed, could result in death or serious injury.*

---

---

**Caution:**

*Indicates a potentiality hazardous situation which, if instructions are not followed, may result in minor or moderate injury or damage to machine or property.*

---

**Note:**

This refers to:

Remarks for making the operation much easier. You get practical hints or knowledge to assist you in the machine operation such as:

Preparations required before operating. How to prevent papers from being misfed or damaged

Precautions required or actions to take after misoperation

Limitations like numerical limits, functions that cannot be used together or conditions under which a particular function cannot be used or obtained.

Information.

---

## Safety Information

When using this machine, the following safety precautions should always be followed.

### Safety During Operation

---

#### Warning:

- Do not expose body parts, loose hanging hair or clothing to moving, rotating or cutting parts.
- If any adjustment or operation check has to be made with exterior covers off or open while the main switch is turned on, keep hands away from electrical or mechanically driven components.
- Note that components of the system and peripherals can be supplied with electric voltage even if the main power switch is turned off and the power cord is disconnected.
- Turn off the power and disconnect the power plug (by pulling the plug, not the cable) if any of the following conditions exists:
  - Objects are dropped into the equipment.
  - Liquids are spilled inside the equipment.
  - You suspect that your equipment needs service or repair.
  - Covers are damaged, loose or missing.
  - You notice unusual noises or odors when operating the equipment.
  - If the power cable or plug is worn out or otherwise damaged.
  - Before cleaning and care (unless otherwise specifically instructed).
- Do not remove covers or guards that are fastened with screws.
- Machines with open (non-covered) automatic sheet feeders pose a crush/pinch hazard. Keep away from these areas when the machines are operating.
- Machines with exposed cutting carriages and heads pose a crush/pinch hazard. Keep away from the moving carriages and ensure that these machines are inaccessible to children during operation. Never leave these units switched on without supervision.
- If an emergency stop button is on the machine – do not use the button for regular operation. It is designed for immediate stop solely for emergency situations to ensure the safety of all individuals involved.
- Electromagnetic compliance:
  - This is a Class A product. In a domestic environment this product may cause radio interference in which case the user may be required to take adequate measures.
  - The product (System) which is connected to this machine will be class A.

#### Caution:

- Always follow all warnings marked on, or supplied with, the product.
- When you disconnect the power plug from the wall outlet, always pull the plug (not the cable).
- Disconnect the power cord before you move the machine. While moving the machine, always exercise care and make sure that the power cord will not be damaged under the machine.
- Do not move the machine while the machine is running.
- Do not open covers while the machine is running.
- Do not switch off the power while the machine is running. Make sure the machine cycle has ended.
- Lay the power cord in a way that nobody will stumble over it. Do not place things on the cord.
- Never attempt any maintenance function that is not specifically described in the product's documentation.
- Always keep magnets and all devices with strong magnetic fields away from the machine.
- If the place of installation is air-conditioned or heated, do not place the machine where it will be:
  - Subject to sudden temperature changes.
  - Directly exposed to cool air from an air-conditioner.
  - Directly exposed to heat from a heater.
- If the machine is not used over an extended period of time, it should be unplugged to prevent damage in case of overvoltage.
- Do not operate the equipment if you notice unusual noises or odors. Disconnect the power cord from the power source and call your authorized technician to correct the problem.

---

## General Safety

---

### Warning:

- This equipment is not suitable for use in locations where children are likely to be present.
- Only connect the machine to a mains power supply of the correct voltage with a good earth-connection; as advised by your service engineer at the time of installation. Improper Earthing of the equipment can result in electrical shock. The correct machine voltage is shown on the label at the mains power supply input on the rear of the machine. If the machine is connected to the wrong supply, the warranty is cancelled. This machine is destined for specific purpose only. Any use going beyond this specific purpose is regarded as beyond the determination. The manufacturer will not be liable for damages resulting from any use beyond the determination, unallowed operation, respectively. The user alone bears the risk.
- Do not make arbitrary changes or modifications to the machine. The manufacturer will not be liable for modifications made to the machine on your own and damages resulting thereof. The EU/UK Declaration of Conformity and the CE/UKCA mark will be invalidated if you make changes to the machine or to the individual components.
- Operators are never allowed to override or bypass electrical or mechanical interlock devices. Trained technicians are allowed to use interlock cheaters only when instructed to do so. Do not expose fingers or other parts of the body to moving, rotating, or cutting devices when running the machine with the interlock cheater installed. Do not wear ties, lanyards or other things that might get trapped into the rollers and cause injuries. Do not change, adjust, or tamper with the safety interlock devices fitted to the machine. Machine including UV-Light should never be bypassed by operator or trained technicians. Permanent eye damage could occur.
- The machine is to be used only by authorized and instructed persons. The responsibility on operating the machine must be strictly laid down and observed so that there are no unclear competences regarding safety aspects.
- Vent holes serve for air circulation to protect the machine from overheating. Make sure that the holes are not covered.
- Always locate the equipment on a solid support surface with adequate strength for the weight of the machine. Make sure the machine is located on a level floor and that there is enough work area around it.
- To protect against fire hazard, replace fuses with those of the same type and rating. Do not change fuses before the machine is disconnected

- from the main power supply. Refer to the product's documentation for the correct procedure.
- Do not expose the equipment to sudden temperature variations that can cause condensation.
- Operators and technicians must be familiar with the safety information detailed in this safety pamphlet and in the product's documentation.
- To avoid hazardous situations, like for instance electric shock or danger while exposed to moving, rotating or cutting devices, do not remove any covers, guards or screws other than those specified in the product's documentation and before the machine is disconnected from the main power supply.
- Always use only the power cord intended for the machine.
- Never connect plugs unless instructed so. Never connect plugs that have a different shape / number of pins.

### Note:

The indications like front and rear, left and right refer to the paper transport direction.

The operator manual always has to be available at the place of use of the machine.

In the interest of technical development the company reserves the right to make alterations to specifications without prior notice!

---

### Warning:

*Do not put fingers or other parts between moving parts.*

---

---

# 1 Unpack and Installation Instructions

1.1	Unpack Instructions .....	1-2
1.2	Installation Requirements .....	1-4
1.2.1	Minimum space requirements .....	1-4
1.2.2	Power Requirements.....	1-5
1.2.3	Workstation Hardware Requirements .....	1-5
1.3	Installation Precautions.....	1-6
1.4	ColorCut Installation .....	1-7
1.4.1	Accessory check .....	1-7
1.4.2	Cutter preparation .....	1-8
1.4.3	Fuse replacement (if required).....	1-12
1.4.4	Tool Carriage and Tools installation .....	1-13
1.5	Software installation.....	1-16
1.5.1	ColorCut Pro Installation and Activation .....	1-16
1.6	Connecting and powering on the cutter.....	1-20
1.6.1	Turning on the cutter .....	1-20
1.6.2	Connecting to computer.....	1-21
1.6.3	USB or Ethernet Connection confirmation .....	1-22
1.7	Checking the installation.....	1-23
1.7.1	Test Cut .....	1-23
1.7.2	Calibration 1 Tangential Cut (2D) to Tangential Crease (1A) .....	1-24
1.7.3	Calibration 2 Tangential Cut (2D) to Drag Crease (1B).....	1-25
1.7.4	Calibration 3 Tangential Crease (1A) to Drag Cut (2C).....	1-25
1.7.5	Calibration 4 Drag Cut (2C) to Drag Crease (1B) .....	1-26
1.7.6	Calibration of the Vision3 sensor offset to the Cutting Blade .....	1-27
1.7.7	Tangential Tool Calibration .....	1-29

## 1.1 Unpack Instructions



1. Remove all screw fixings from the lid [A].
2. Remove the lid [A].



3. Remove screws from the support beams.



4. Remove the support beams [B] (3x).



5. Remove contents.

**Caution:**

*Three people are required to lift the cutting table.*



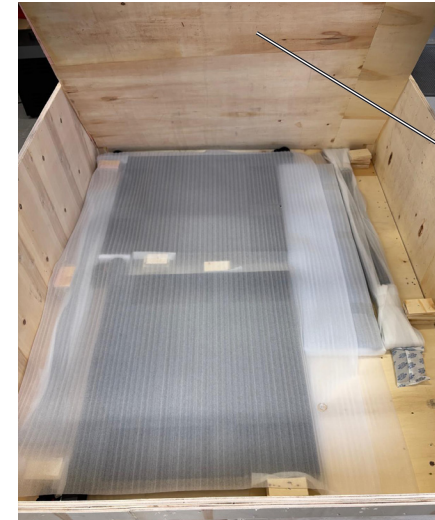
6. Remove the cutting table [C].



7. Remove screws from all lower sides.

**Caution:**

*More components located under the false floor.*



8. Remove the false floor [D].  
9. Remove stand panels, legs and fixings from the box.



10. Unpack the components.

## 1.2 Installation Requirements

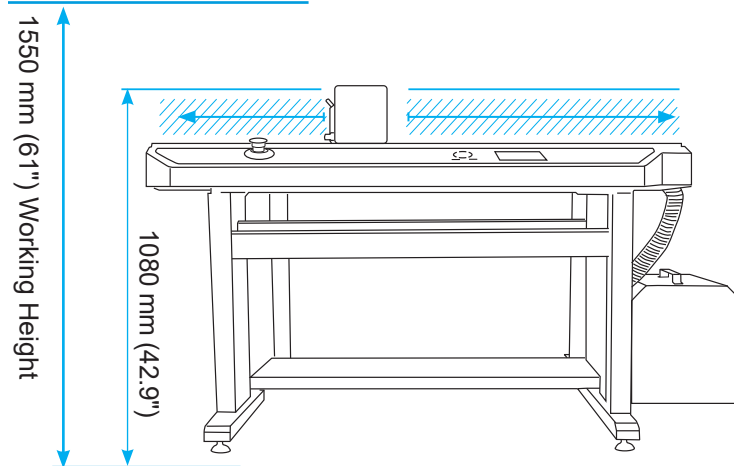
### 1.2.1 Minimum space requirements

1. Working Space is different to Machine dimensions.
2. Ensure there is sufficient space at the rear of the FB1190T to enable the Beam carriage to move freely and without obstructions.
3. Ensure there is sufficient space above the FB1190T to enable the carriage beam to move easily and ensure that there are no obstructions, that may prevent you from easily pressing the Emergency Stop Switch in case of a problem.
4. Ensure there is space in front of the machine to operate the control panel and to position sheets easily upon the machine.
5. Ensure there is space to the side of the machine for the Vacuum pump and the vacuum pump hose.

**Note: Working space:** The machine can be placed up against a wall or even two walls during normal operation to save space. However, it is recommended leaving enough space to be able to access the front of the machine (control panel).

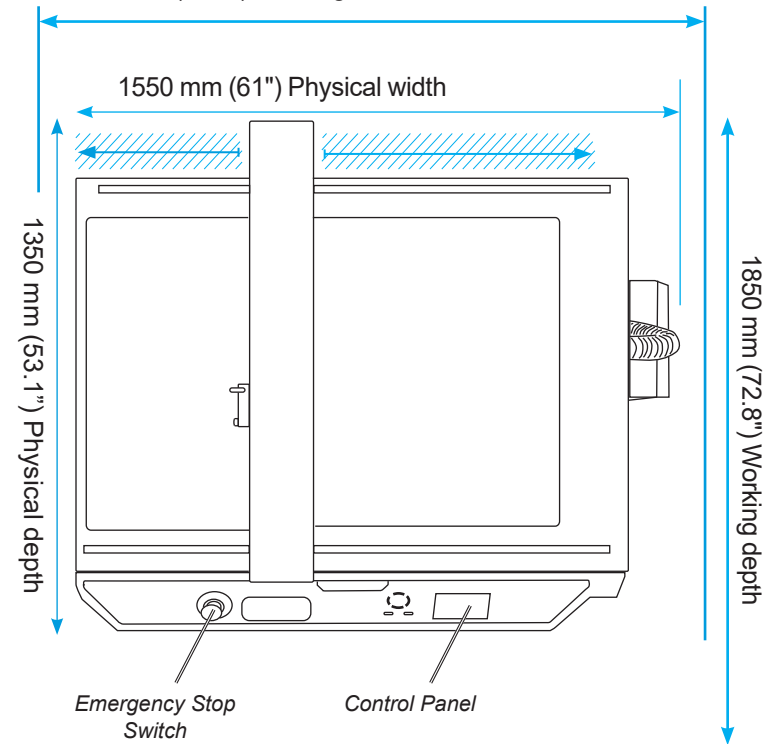
**Service access:** It is recommended to have a clearance of at least 800 mm (31.5") in each direction around the machine.

#### Working Space



#### Working Space

2150 mm (84.6") Working width



## 1.2.2 Power Requirements

1. Ensure that a power outlet is available nearby the system, fused to withstand the system's combined rated current.
2. The current consumption can be seen on the machine labels. For example: if the machine label says "100-240 V, 3.4-1.7 A" then the rated current is 3.4 A at 100 V and 1.7 A at 240 V.
3. Make sure to route power cords to avoid people from tripping on them.
4. Avoid using excessively long extension cords.
5. Make sure the machine is grounded.

## 1.2.3 Workstation Hardware Requirements

### Compatible Vector Programs

	Adobe Illustrator® *	Corel Draw® **
PC Windows	CS6 CC 2018 - CC 2026	2018 - 2026
Mac OS	CC 2020 - CC 2026	

\*Does not support illegal copies of Adobe Illustrator

\*\*Full version only. Does not support "Home and Student", "Essentials", "Technical Suite" edition or illegal copies of CorelDRAW

1. Multicore Intel processor with 64-bit support
2. Windows 10 Professional / Windows 11 Professional x64 bit
3. 4 GB of RAM (8 GB recommended (As supplied with ColorCut Pro Server Station))
4. Minimum display resolution: 1024x900
5. Recommended Display Resolution: 1280x960 or higher.  
(Screens with resolutions such as: 1152x900, 1024x900, 1280x960, 1440x900, 1440x960, 1440x1024, 1440x1080, 1600x900, 1600x1080, 1600x1280, 1920x1080 or higher)
6. 2x available USB Ports (Note KB & Mouse often use a port each so factor this in)

### Compatible OS Versions

PC Windows 10 Pro or 11 Pro – 64 bit

Mac OS version 11 (Big Sur) - Mac OS version 26 (Tahoe)

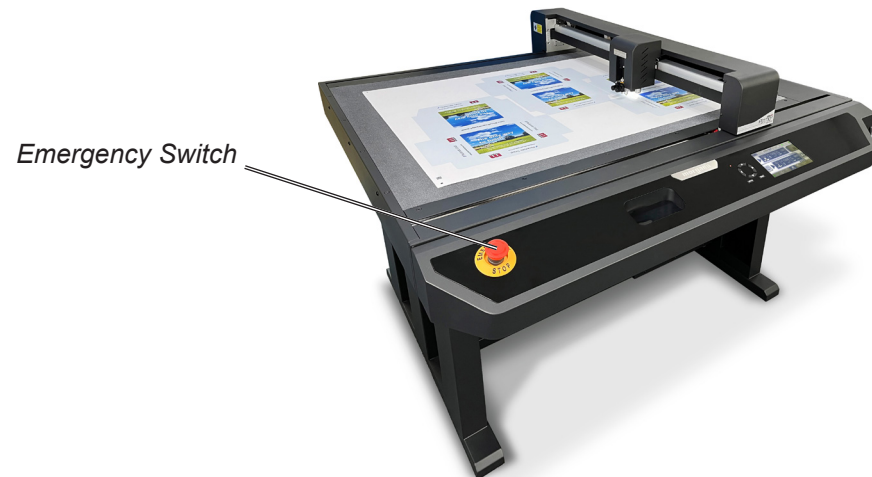
## 1.3 Installation Precautions

### Safety measures

Please read the information and safety measures carefully prior to installation and initial operation of the unit.

- Do not place any magnetic objects in the vicinity of the cutting head; otherwise uniform contact pressure may not be ensured.
- Do not remove the connection cable to the computer while cutting is in progress.
- Do not open or reach into the unit when it is connected to electricity supply.
- Never open the casing and do not make any modifications to the unit yourself.
- Ensure that neither liquids nor metal objects are put inside the FB1190T.
- Ensure that the wall socket used is grounded.
- Ensure that the connected voltage (100-240 V) does not deviate by more than  $\pm 10\%$ . Otherwise install a voltage stabiliser.
- Remove the power plug from the unit if it will not be in use for a longer period of time.
- Never reach into the unit in the vicinity of the blade holder during the cutting operation.
- Stop any cutting jobs in progress before re-adjusting the blade holder.
- Always ensure that the cutter remains inaccessible to children during operation and never leave the unit or individual parts of it switched on without supervision.
- Do not touch the tip of the cutting blade to avoid injury.
- Always place the unit on a stable base or use the supplied stand to prevent it from falling down.
- Disconnect from the power supply during thunderstorms; it can be damaged or destroyed by electrical surges caused by lightning.
- Do not open covers while the machine is running.
- Do not move machine while the machine is running.
- Prior to accessing the interior, always ensure that the cutter is turned off and disconnected from power supply.
- This equipment is not suitable for use in locations where children are likely to be present.

- Do not use emergency stop button for regular operation of the Cutter. The emergency stop button is designed for immediate stop solely for emergency situations to ensure the safety of all individuals involved. To reset the emergency stop button rotate it clockwise direction and pull it back upwards to its original position. The emergency stop button should only be reset after addressing and resolving the emergency condition that triggered its activation.

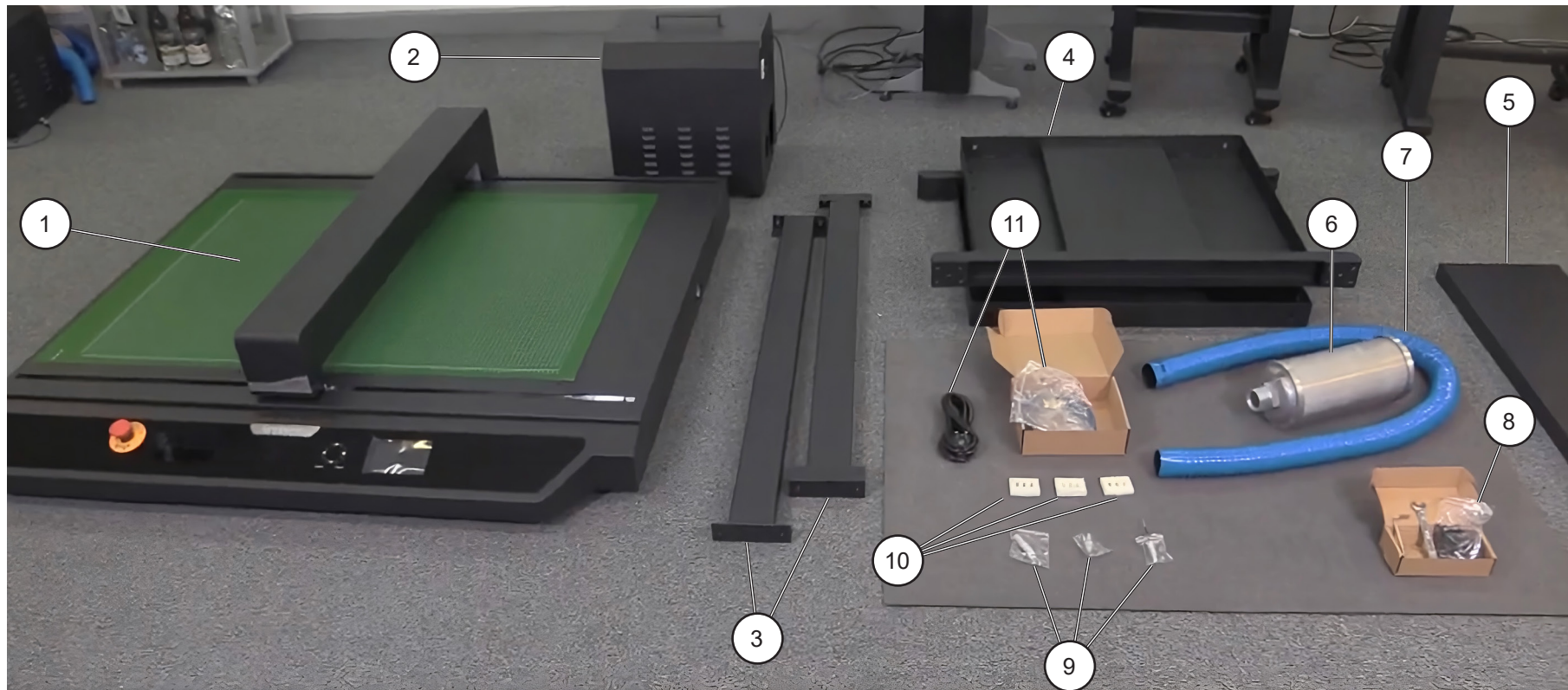


## 1.4 ColorCut Installation

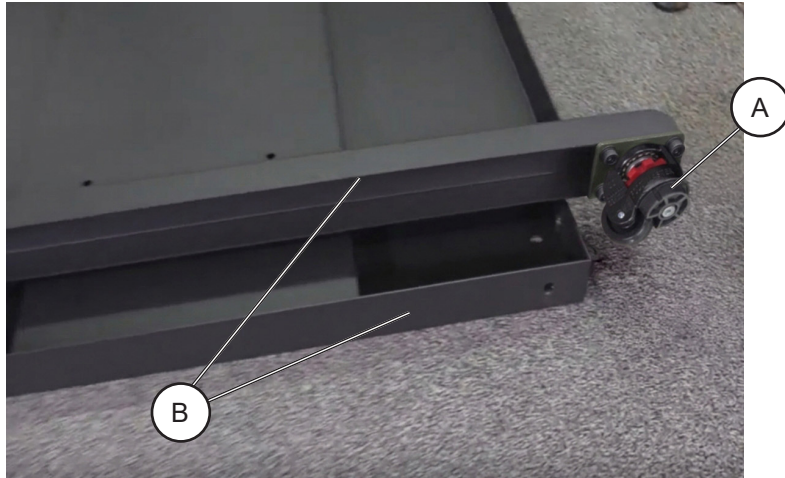
### 1.4.1 Accessory check

Item	Qty	Description
1	1	Cutting table
2	1	Vacuum fan
3	2	Rear upper crossbars
4	2	Stand sides
5	1	Center crossbar
6	1	Silencer
7	1	Flexible hose

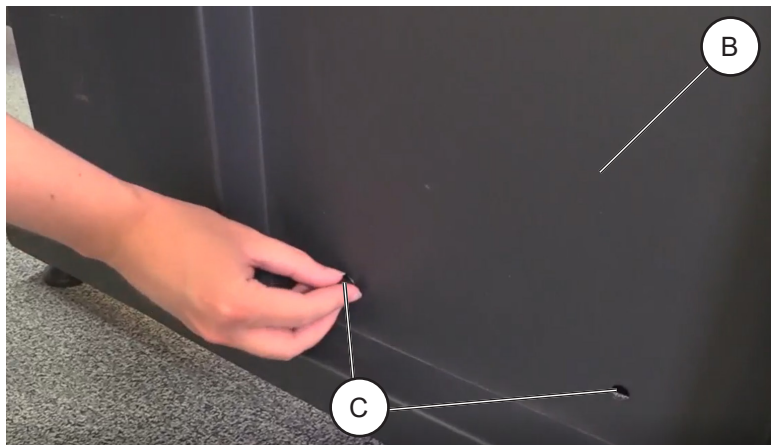
Item	Qty	Description
8	1	Stand assembly kit
9	3	Mountable tools
10	3	Cutting blades
11	2	Connectivity cables



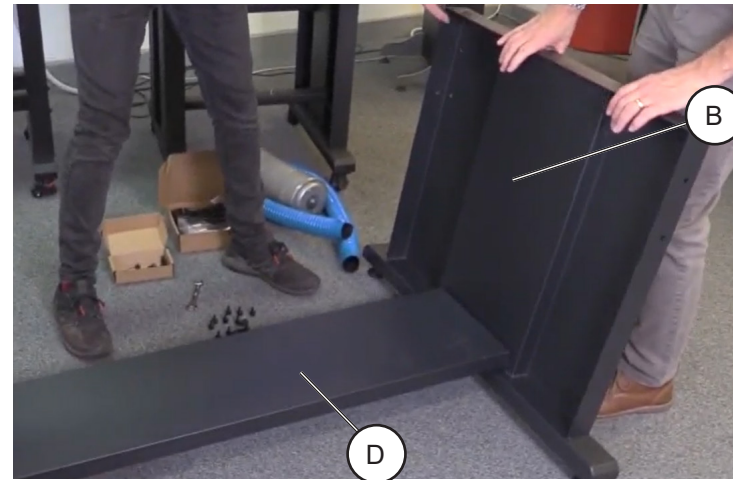
## 1.4.2 Cutter preparation



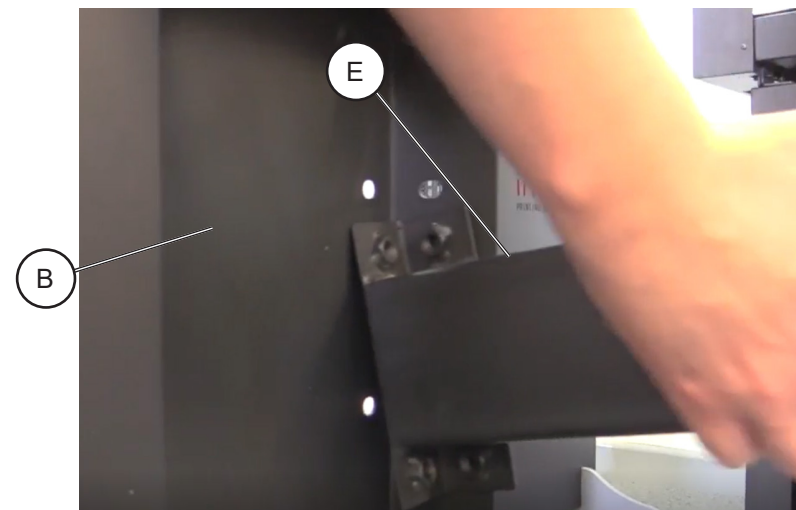
1. Screw in the wheel assembly [A] (4x) into the side panels [B] (2x)



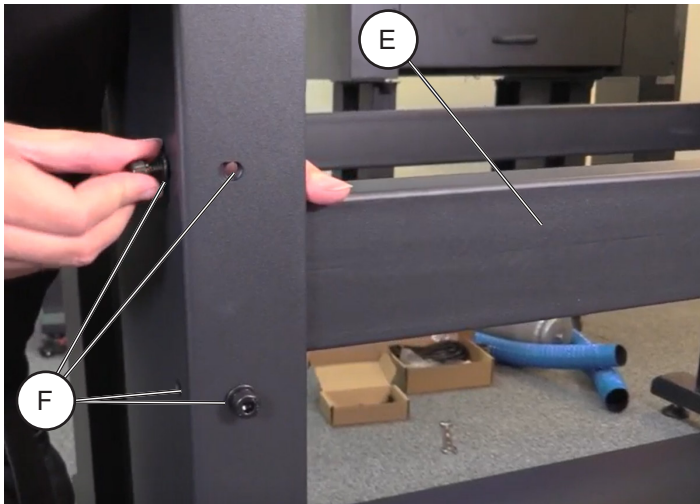
1. Insert bolts [C] (2x) in the holes of exterior side panel [B] and align with the holes in center crossbar [D].



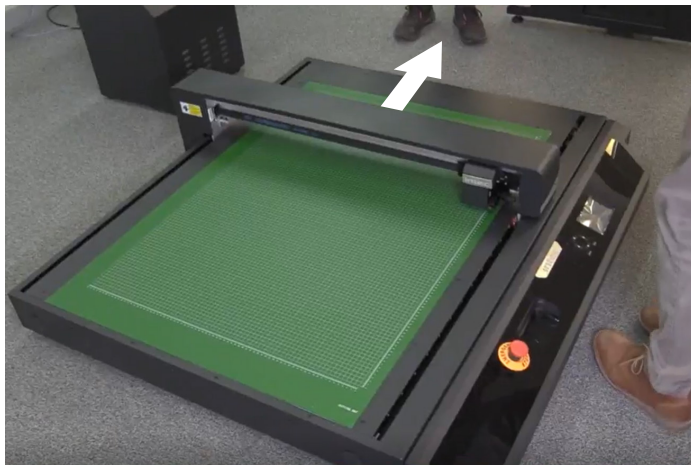
2. Position and align the center crossbar [D] with the second side panel [B].
3. Secure the crossbar [D] with the bolts [C] on the exterior side of the panel [B]. Tighten bolts by hand.



4. Position and align the upper crossbars [E] (2x) with the holes in the side panels [B].



5. Secure the rear upper crossbar [E] with bolts [F] (16x). Do not tighten the bolts yet.



6. Slide the beam to one side of the cutting table.



7. Carefully lift the opposite side of the cutter.

**Caution:**

*This operation requires two people.*



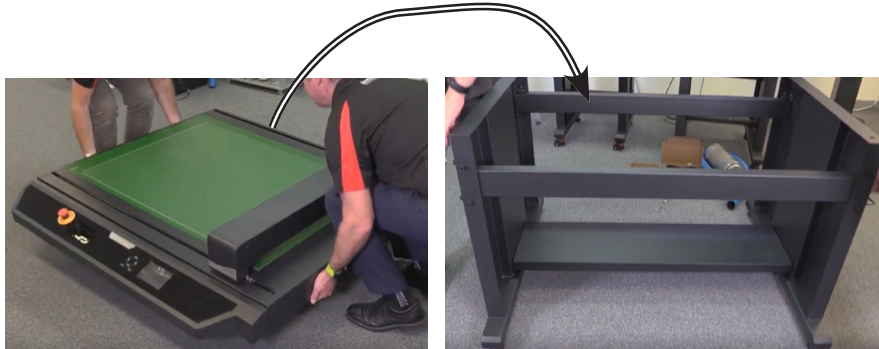
8. Remove the screw securing cutter's feet [G] as the second person holds the cutter and remove the feet [G]. Lower cutting table to the floor.

Note: Feet are not required, when cutter is fitted to its stand.

9. Remove the remaining feet (2x) on the other side of the cutting table. Perform Steps 7-9.

**Caution:**

*This operation requires three people.*



10. Two people lift the cutting table and carry it to the stand. A third person helps align the holes by guiding the cutting table into position.

Note: Slack stand can be manipulated to aid alignment.



11. Insert bolts [H] (4x) to secure cutting table to stand. Fasten all bolts.



12. Tighten all bolts [F] (16x).



13. Lubricate the thread of the silencer [I] before fitting.

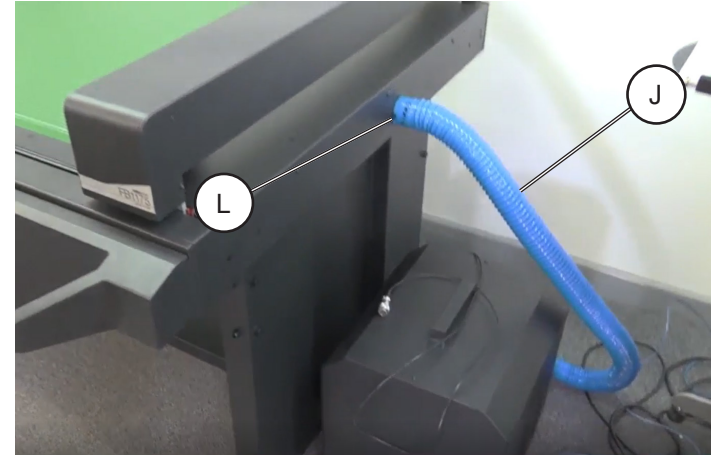
14. Push on the hose [J] and screw the silencer [I] on to the exhaust outlet of the vacuum fan [K].



15. Position the machine in its working location.  
16. Screw in the hose coupling [L] for flexible hose.



17. Push on the flexible hose [J] on to the hose coupling.



18. Slide the tool head beam aside.



### 1.4.3 Fuse replacement (if required)

**Warning:**

*Make sure the power cord is unplugged before replacing the fuse!*

The FB1190T is shipped with a F 6.3 A fuse installed.

This fuse works in 100-240 Vac environments.



**Procedure:**



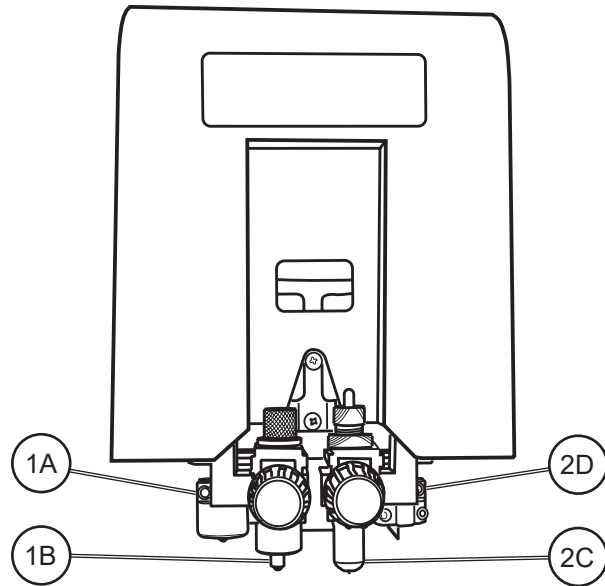
1. Open the inlet filter fuse holder cover.



2. Replace the fuses [A] (2x).

#### 1.4.4 Tool Carriage and Tools installation

The tool carriage is mounted on a bar, located at the front of your FB1190T cutter that spans across the cutting area. The Tool carriage contains two tool holders, each independently controllable. Each Tool holder enables you to install or switch easily and efficiently between a range of tools.



Tool position 1 [A & B] are the default position for Creasing. Tool position 2 [C & D] are the default position for cutting.

Tool Holder Position 1A is the position for the Active Tangential Creasing tool (this comes pre-fitted by default with a creasing wheel).

Tool Holder Position 1B is the position for the Passive Creasing tool.

Note: Tool 1 has two types: the Tangential creasing wheel (1A) and the Passive creasing ball (1B), but only one can be used at a time. The Tangential creasing wheel can be permanently fitted, while the Passive creasing ball is mounted lower, giving it priority when installed. To use the Tangential creasing wheel, the Passive creasing tool must be removed, and the correct tool type must be set on the LCD panel.

Tool Holder Position 2D is the position for the Active Tangential Blade (this comes pre-fitted with a Tangential blade).

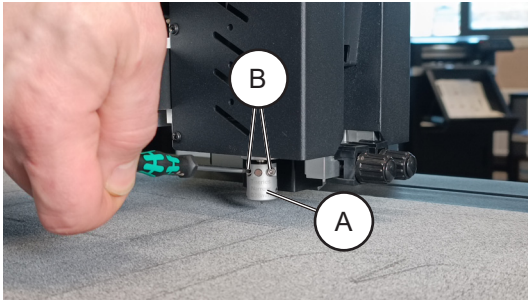
Tool Holder Position 2C is the position for Passive blade holder.

Note: Tool 2 features two types: the Tangential cutting blade (2D) and the Passive (Drag) cutting blade (2C), but only one can be used at a time. The Tangential cutting blade can be permanently fitted, while the Passive cutting blade is mounted lower, giving it priority when installed. To use the Tangential cutting blade, the Passive cutting tool must be removed, and the tool type must be set on the LCD panel.

## Tools installation

### Tool position 1 - Tangential Creasing Wheel

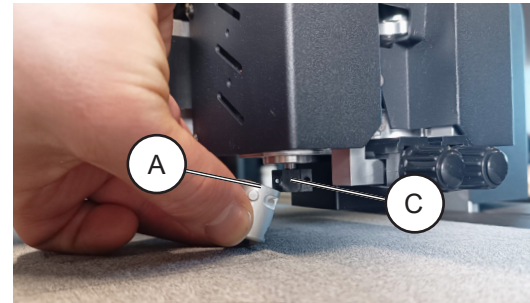
Note: The FB1190T comes pre-fitted with the FB-UMAGT-00W2 creasing wheel. It is possible to purchase and fit different wheel sizes onto the cutter. The following procedure describes how to change the pre-fitted wheel.



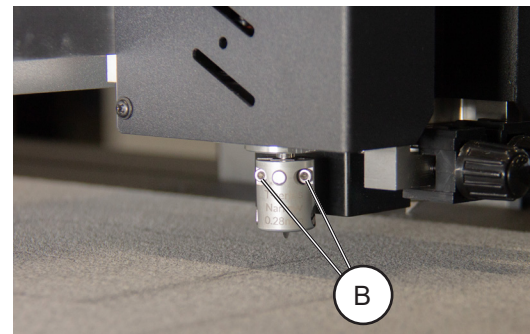
1. Turn off the cutter and disconnect the power cord.
2. Turn the tangential creasing tool [A] to gain access to screws [B] (2x).
3. Loosen screws [B] (2x)
4. Remove the tangential creasing wheel holder [A]



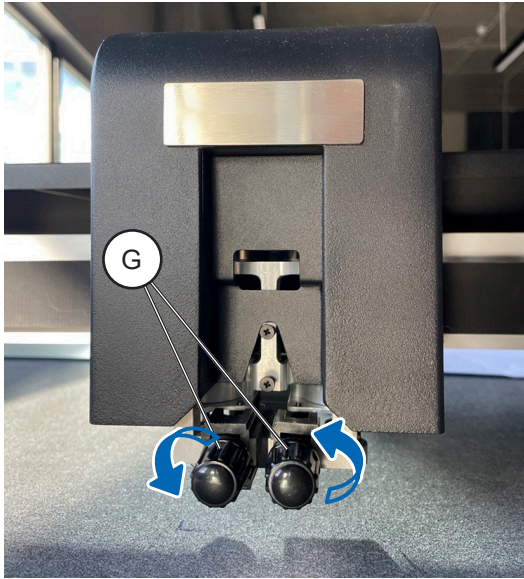
5. Retrieve new Tangential Wheel holder



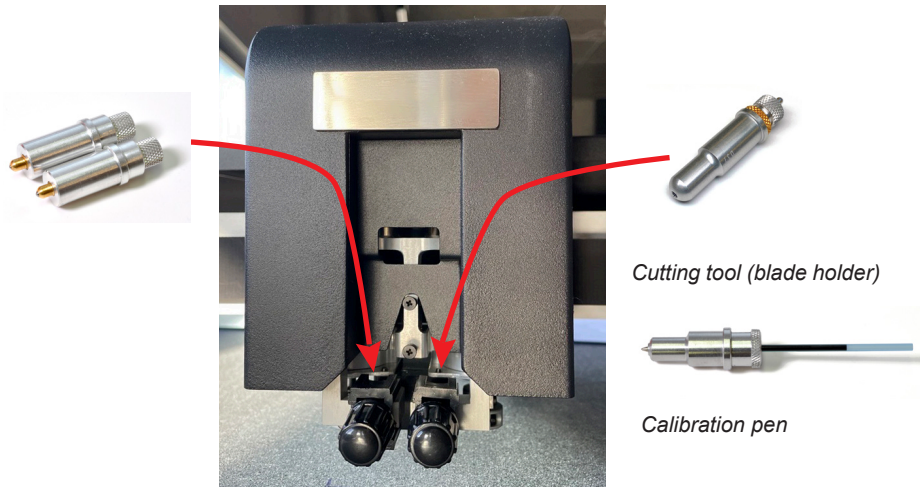
6. Place the Wheel holder on the tool shaft [C], the tool will snap into place
7. While holding onto the new wheel holder, tighten screws [B].
8. Perform Tangential Tool Calibration (See section "Tangential Tool Calibration").



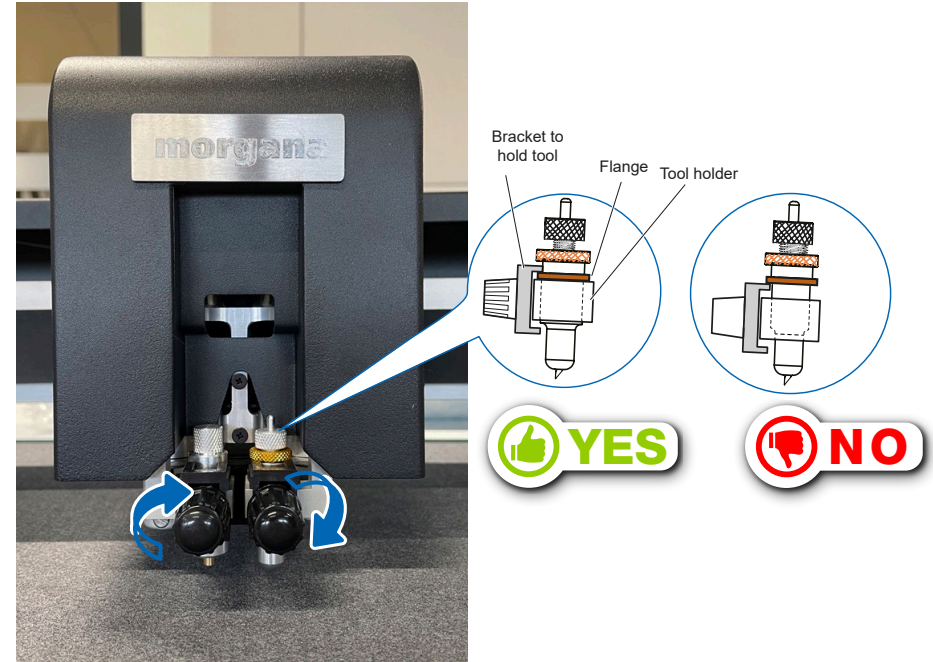
## Tool position 1B and 2C



1. To install the passive tools into the FB1190T loosen the tool holder's thumbscrews [G] sufficiently to enable a blade holder or creaser to be inserted in position up to its flange.



2. Push the Blade Holder, Crease tool or Calibration Pen all the way into the tool holder until the tools' flange completely touches the upper part of the holder.



3. Make sure that the tool bracket is engaged on top of the tool's flange, and then tighten the screw.  
It is important, the Bracket to hold the Tool, is over the Flange as this will hold the tool down. (If the Flange is above the bracket that holds the tool, the tool height will be incorrect and the tool may gradually move up during operation).

## 1.5 Software installation

The ColorCut Pro software is a professional cutting package that creates cutting files directly from Illustrator or CorelDRAW using the vector lines you have drawn, ColorCut Pro communicates directly with your cutter and ultimately cuts your jobs.

There are two installation versions of ColorCut Pro, a plug-in (which requires Adobe Illustrator® (MAC or PC) or CorelDRAW® (PC)) which creates the cutting jobs directly from your vector lines and can either send your jobs directly to the cutter (PC only) or create a cut file that can be retrieved at any time using a QR code (automatically added to the sheet) (MAC & PC clients) then users can cut a different computer (acting as a production server).

ColorCut Pro Software for your ColorCut Cutter is supplied on the included CD, however it may also be downloaded from Plockmatic Customer Center.

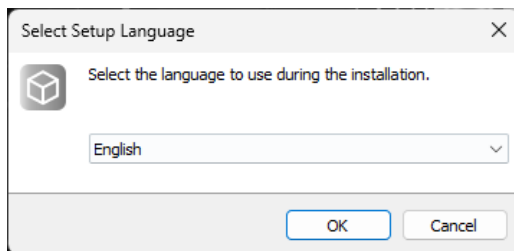
ColorCut Pro requires a Minimum display resolution: 960×830.

### 1.5.1 ColorCut Pro Installation and Activation

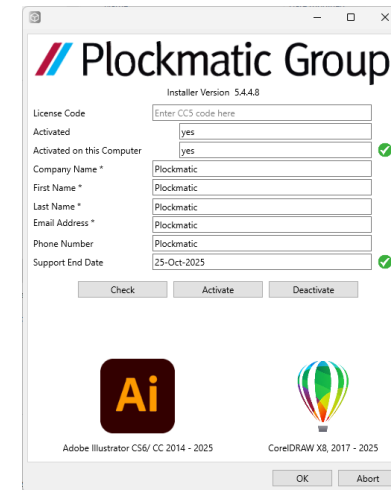
1. Run the installation program: SetupColorCutPro.exe

The setup program requires various confirmations for the installation of the program.

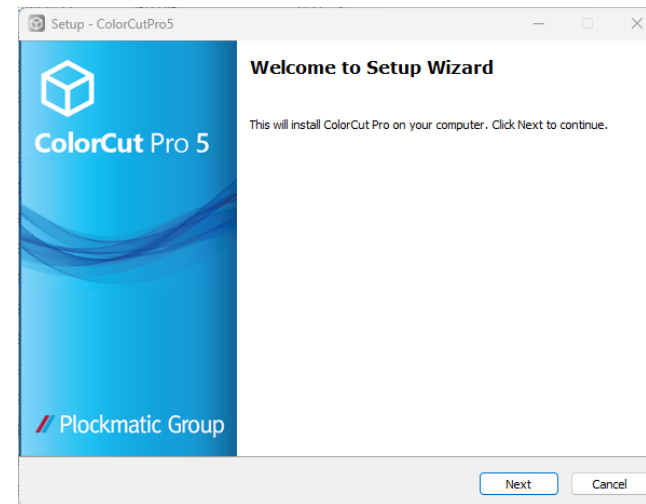
On some computers you could be asked the system administrator's password to execute the installation, in the case you do not have this information; contact the technician who administrates your system.



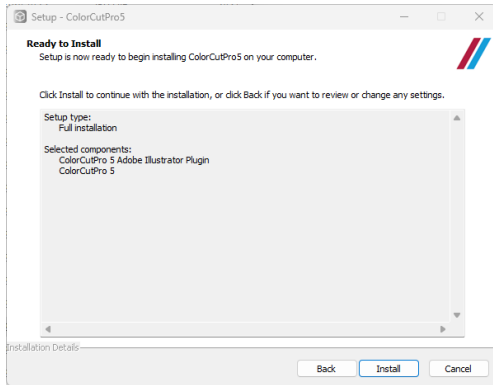
2. Select preferred language and click [OK] to proceed with installation.



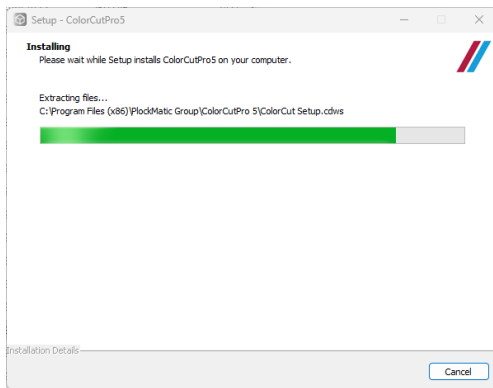
3. Enter the License code from the card supplied with your ColorCut Pro software and fill out your details. Click [Activate].



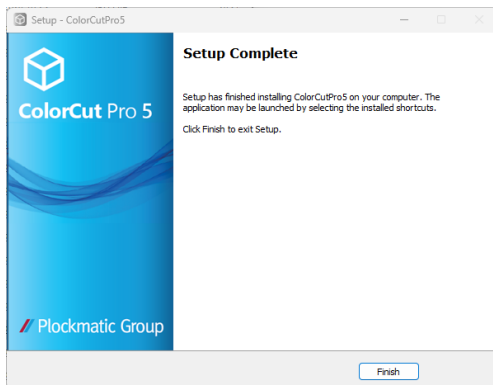
4. Click [Next] to proceed with ColorCut Pro installation.



5. Click [Install] to continue with the installation.



6. Wait until the installation is complete.



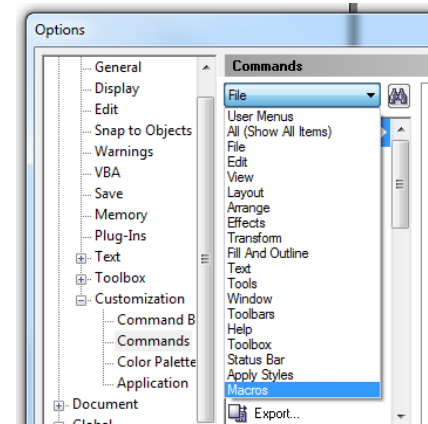
7. Click [Finish] to finalize installation.

## ColorCut Pro installation for CoreDraw

Skip this section if you have installed ColorCut Pro for Adobe Illustrator.

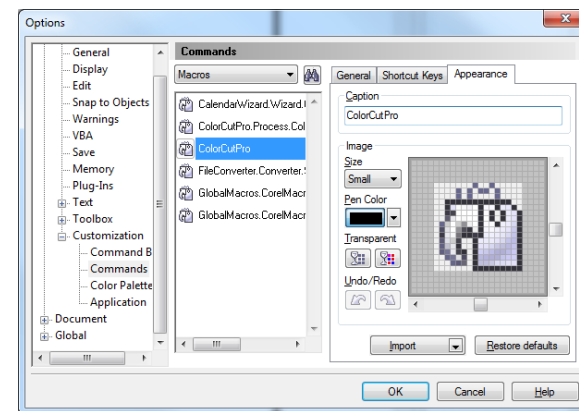
As part of the ColorCut Pro installation, the plug-in's to CoreIDRAW are installed, however you need to add a shortcut into CoreIDRAW.

1. Open CoreIDRAW then click on the Tools menu, and select Options.
2. From the Options dialogue box, select: Customization and under this, click Commands
3. In the panel on the right, select macros from the drop down menu.
4. Select either:
  - colorcutpro.process.
  - colorcutproall
  - colorcutpro.process.colorcutpro

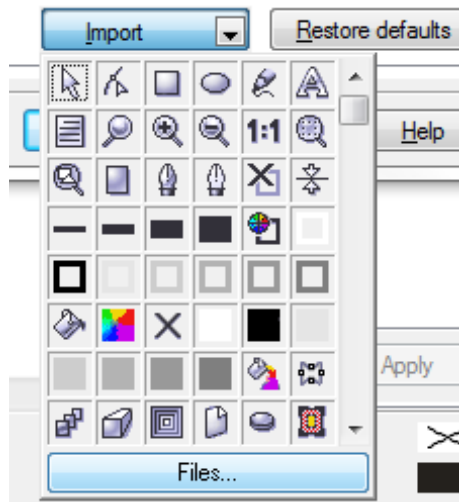


The 'colorcutpro.process.colorcutproall' version exports the entire drawing however the desired way to work is with layers

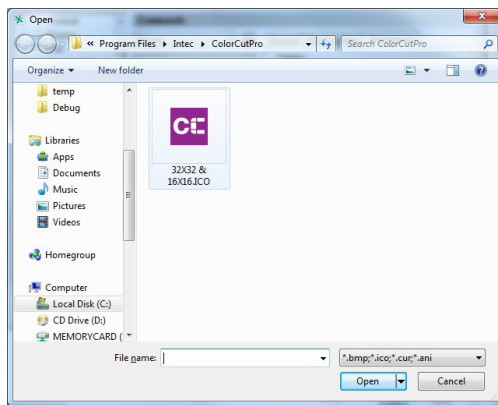
The 'colorcutpro.process.colorcutpro' version only exports the currently selected layer. Unless you want to export the entire drawing. If you are unsure, we recommend using the 'colorcutpro.process.colorcutpro' version.



5. On the appearance tab menu (Under caption), change the name to ColorCutPro. This is the name that will appear on the menu.



6. On Appearance tab, click [Import].
7. From the [Import] drop down, select [Files] at the bottom.

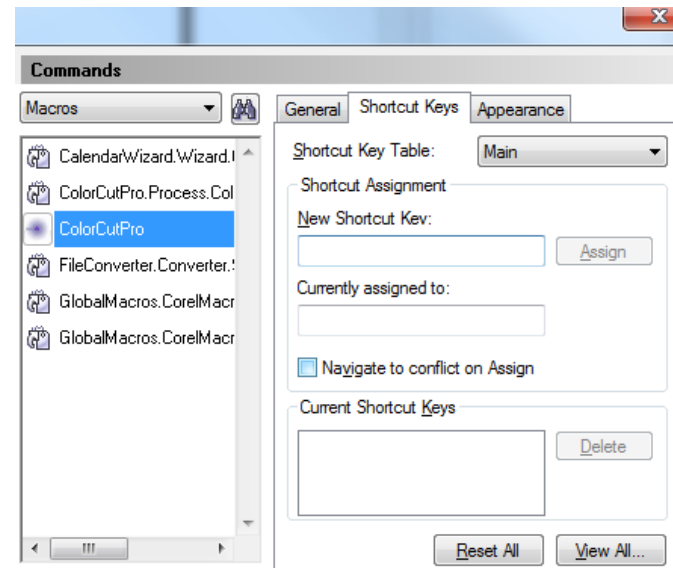


8. Navigate to:

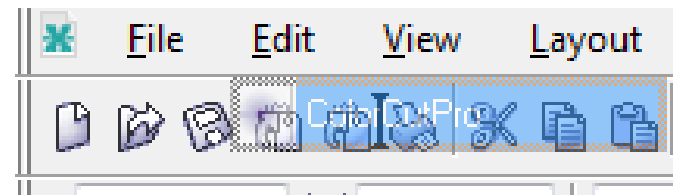
For 32bit users of CorelDRAW	C:\Program Files (x86)\PlockMatic Group\ColorCutPro 5
For 64bit users of CorelDRAW	C:\Program Files\PlockMatic Group\ColorCutPro

and select the icon as shown.

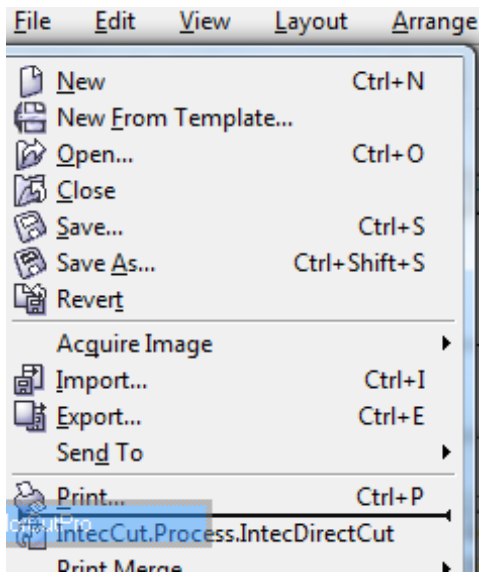
*The file path may alter.*



9. Open Shortcut Keys Tab. Place the mouse cursor at New Shortcut Key input field and click then hold down the Alt key and type C.



10. To add ColorCutPro icon to your tool bar click on the ColorCutPro Command from the Macro list, press and hold the left mouse button and drag the icon next to the printer icon on the tool bar and release.



11. To add the ColorCut Pro plug-in to your File Menu next to the Print item, press and hold on the Command name again at point, Click and hold the left mouse button and drag the icon until you position the mouse over File Menu, which will pop open the file drop-down menu.
12. Then move the mouse to next to the print button without releasing it and let go of the mouse button. You should now see the ColorCut Pro menu option appear.

Installation of CoreIDRAW is now complete, continue on to the next section.

Intentionally blank

## 1.6 Connecting and powering on the cutter

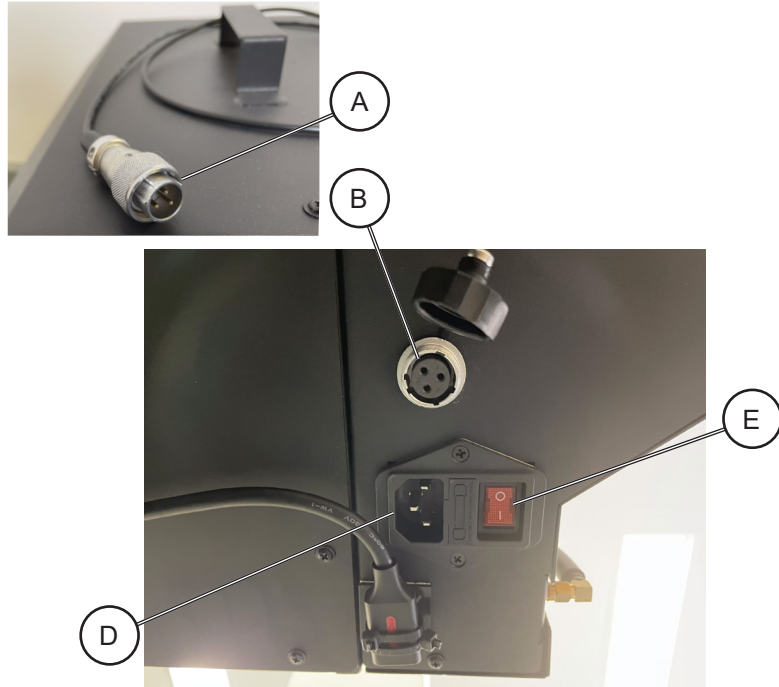
### 1.6.1 Turning on the cutter

**Warning:**

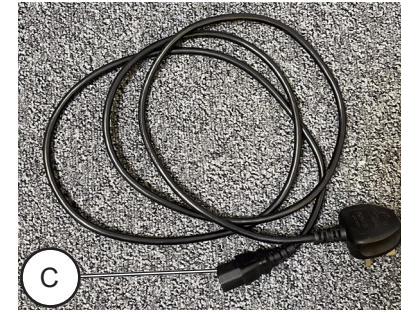
Before connecting the machines to the power supply, make sure that each cover on each module has been reinstalled and that any part of the machine that was disassembled during installation was put back in place. Do not connect the machines to the power supply if covers are off or if any module is (even partially) disassembled. Make sure you use a proper grounded plug in the wall outlet. Never plug in the module to a non-grounded plug.

**Warning:**

Before turning on the machines, make sure that each cover on each module has been replaced and that any part of the machine that was disassembled during installation was put back in place. Do not turn the machines on if covers are off or if any module is (even partially) disassembled.



1. Connect the control cable for the Vacuum Pump [A] to the Vacuum pump control jack on the underside of the control panel [B].



2. Securely plug the power cord [C] into the mains socket [D] underside of the panel and connect to an electrical outlet of the specified voltage.
3. Turn on the power using the mains switch [E].
4. The Red lamp [F] on the control panel will light, the LCD display [G] will illuminate. A Safety message will appear on the LCD panel asking your to press the [ENTER] key to continue.



## 1.6.2 Connecting to computer

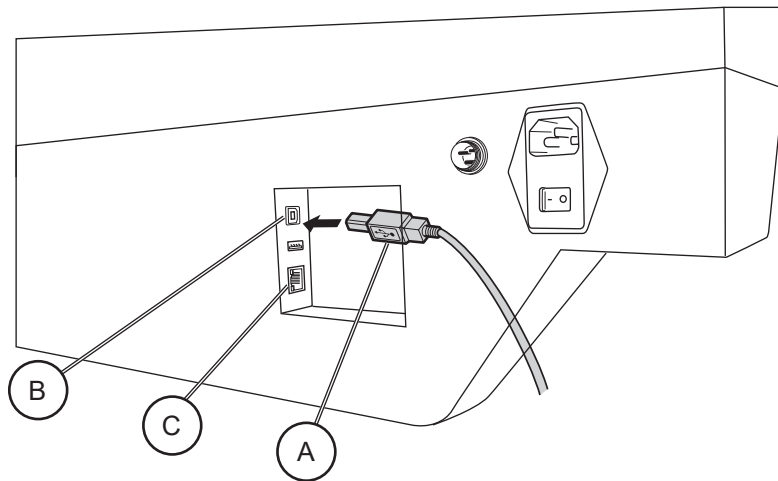
The ColorCut Pro software includes the USB and Ethernet drivers built into the software. There is no need to install any additional drivers.

Note: Operation can not be guaranteed in the following circumstances:

- 1) When connection is made through a USB hub or an add-on USB board.
- 2) When you are using a custom-built computer that has been modified.

For optimal results, please ensure the following:

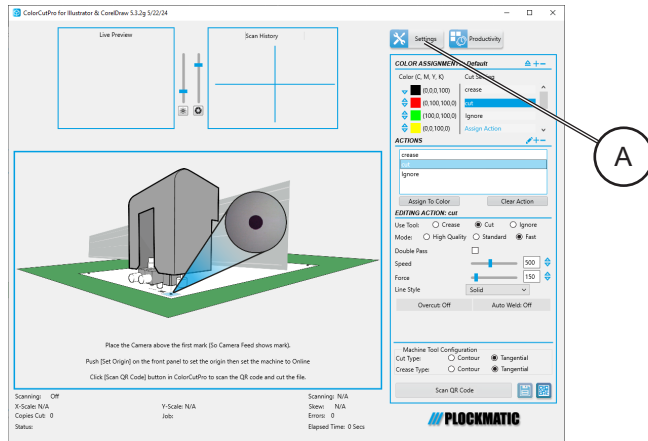
- Do not connect or disconnect the USB/Ethernet cable while you are installing the Color Cut Pro software.
- Do not connect or disconnect the USB/Ethernet cable while starting up the computer.
- Do not connect or disconnect the USB/Ethernet cable while switching on the cutter.
- Do not disconnect the USB/Ethernet cable within a 5 second period of connecting it. (It does not always recognise the fact it was subsequently disconnected and won't reconnect again until you power-cycle both devices)
- Do not disconnect or connect the USB/Ethernet cable while you are cutting a job, or while data is being transferred.



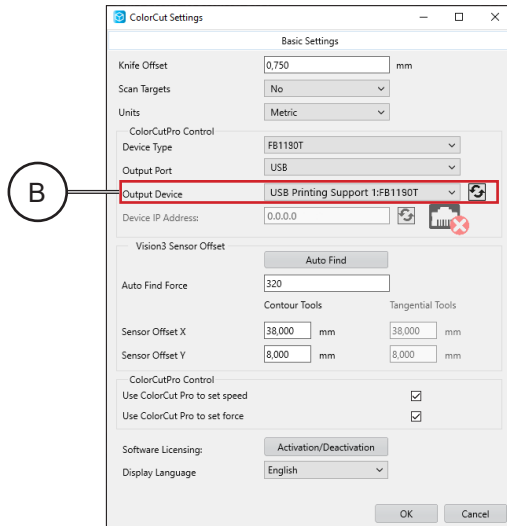
- Plug the USB cable [A] into the USB socket [B] on the underside of the control panel and connect to your Windows PC; or plug the Ethernet cable into the socket (C) on the underside of your control panel and connect to your Ethernet socket.

Intentionally blank

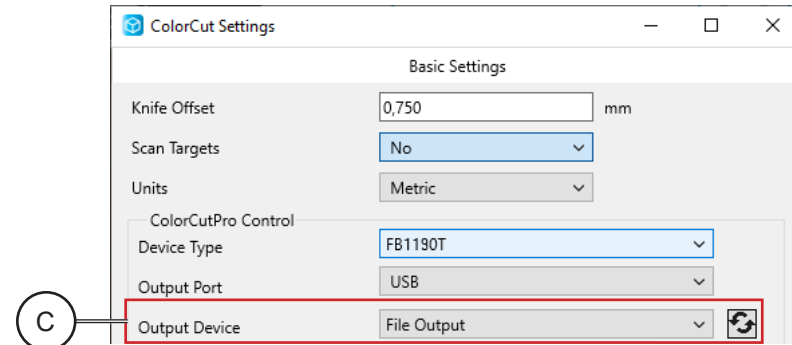
### 1.6.3 USB or Ethernet Connection confirmation



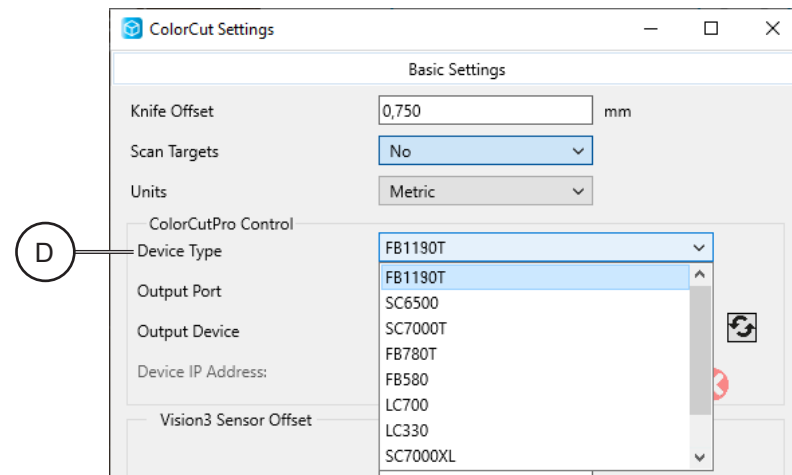
1. Launch ColorCut Pro.
2. When the ColorCut Pro application launches, click on the Settings button [A].



3. The ColorCut Pro Settings dialogue box will appear.
4. If the connection to your cutter is successful then under the Output Device option you will see the term 'USB Printing Support: x', where 'x' is your cutter type, or 'Ethernet Direct connect'[B].



5. If the Output Device shows, [File Output] then the connection has not been successful [C]. Switch off the cutter and wait 10 sec. Unplug the USB cable from your computer, and try a different port, then switch back on the ColorCut engine. Wait until the Home screen is displayed on the FB1190T LCD panel. Repeat steps 1 to 4.



6. After confirming successful connection, select Device Type FB1190T from drop-down menu [D].
7. Click [OK] to confirm and close the settings dialogue box.

## 1.7 Checking the installation

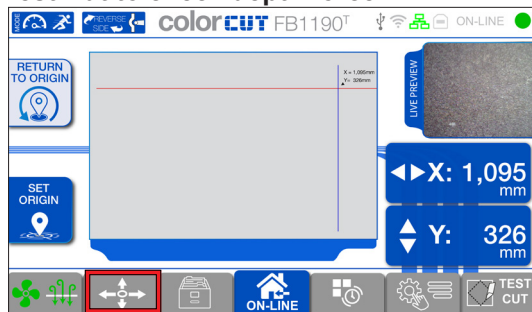
### 1.7.1 Test Cut

The Test Cut function allows to check blade depth/force settings on ColorCut FB1190 cutter and perform calibration of Align Tool2 to Tool1.

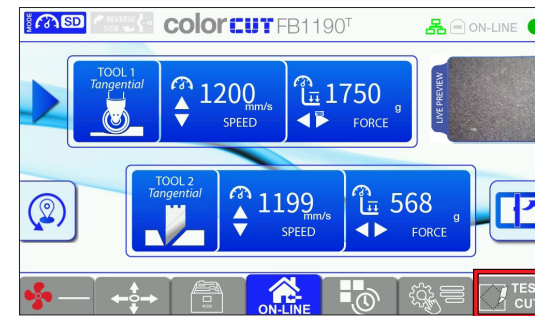
Note: Do not press [TEST CUT] until you have placed a sheet of material on the bed and moved the tool carriage to a clear area over the material, away from the "Home" position. The Test Cut function will draw a diamond shape with Tool 1 and a square with Tool 2 at the current tool location. If you press [TEST CUT] without moving the tool carriage away from the "Home" position an error message will appear. This happens because the tool carriage would try to move into the side of the cutter. If you see this error, press [Enter] on the control panel and move the tool carriage further away from the "Home" position. Follow the steps below to perform a Test Cut.

Checking and adjusting the settings for your specific media prior to a production saves time and eliminates waste.

#### Performing a Test Cut to check depth/force:



1. Place a blank sheet of paper on the flatbed.
2. Turn on the vacuum fan.
3. Make sure the carriage is positioned over a clear area of the media with approximately 25 mm of space (1") available in either direction around the test Blade Tool's position.
4. If there is not enough clear space then, press the [MOVE] tab button on the display:
  - Press the Up/Down arrow buttons on the keypad to move tools carriage across the media in Y direction.
  - Press the Left/Right arrow buttons on the keypad to move the beam across the media in X direction.



5. Select the tool to use for tool 1 and tool 2 with a long press on Tool 1 button and Tool 2 button.

#### Caution:

*If you set the wrong tool type (for example, if you select a passive tool type when no passive tool is fitted), the Tangential Tool may not rotate correctly. This can cause the tool to drag across the material, damaging both the material and the blade. You will need to replace the blade and re-calibrate the system, so be careful.*

6. Press [TEST CUT] button. The FB1190T will draw a Diamond Shape using Tool1 (The creasing tool) and cut a Square around the Diamond shape using Tool2 (The blade) depending on which tool has been loaded.
7. Check the cut quality/depth and pressure. If you are cutting through the media (Die-Cutting), remember the least amount of blade possible will provide the best result.

Note: When cutting with the Passive (Drag) knife, the minimum level of exposed blade will provide the best quality on sharp inverted turns and extend your cutting strip life. Too much Blade, will result in the blade cutting through media and cutting into the cutting mat. This will reduce blade life, create poor quality cutting on sharp inverted turns and damage the cutting mat reducing the cutting mat life.

- Check the test cut on sheet. If the cut depth is not sufficient or it is too excessive, select the appropriate tool (e.g., Tool2) and adjust the force using the Left and Right arrow keys on the panel until the material cuts correctly.
- Use the following guidelines to adjust blade exposure based on the cut results:

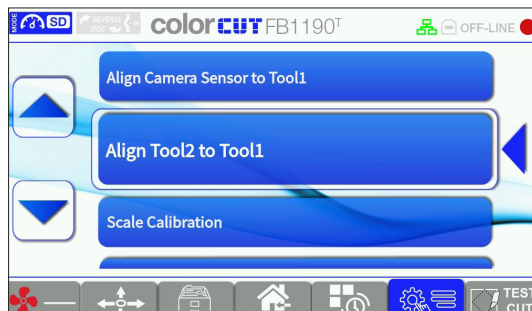
Result	Action
Cuts through card with pressure < 220 g	Too much blade exposed. Remove blade holder, reduce blade exposure, and test again.
Cannot cut through card with pressure > 450 g	Not enough blade exposed. Increase blade exposure and test again.

Note: Cutting pressures higher than 450 g may be used for metallic materials, PET and vinyl's.

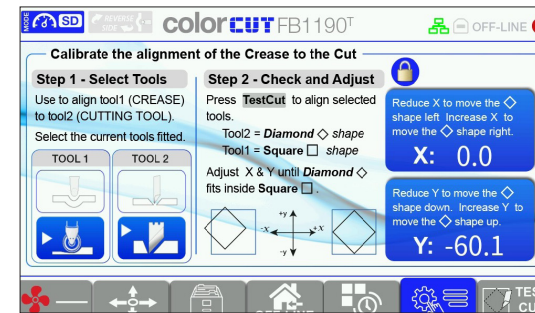
- When new settings are applied, repeat the test cut until the desired cut is achieved.

### 1.7.2 Calibration 1 Tangential Cut (2D) to Tangential Crease (1A)

- Navigate to Align Tool 2 to Tool 1 tab.



- Select the Tangential Crease and Tangential Cut tools.



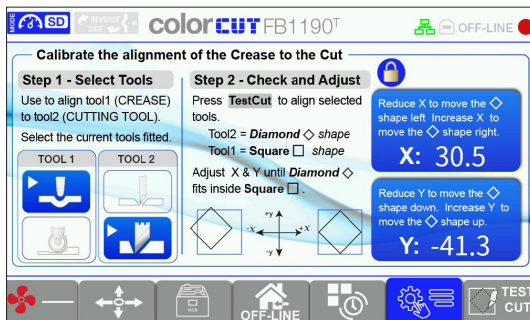
- Place a blank sheet of paper on the flatbed.
- Turn on the vacuum fan.
- Make sure the carriage is positioned over a clear area of the media with approximately 25mm of space (1") available around the cutting head.
- If there is not enough clear space then, press the [MOVE] tab button on the display:
  - Press the Up/Down arrow buttons on the keypad to move tools carriage across the media in Y direction
  - Press the Up/Down arrow buttons on the keypad to move tools carriage across the media in X direction
- Press [TEST CUT] button. The FB1190T will crease a diamond shape using Tool1 (the creasing tool) and cut a square around the diamond using Tool2 (the blade).
- If you need to adjust the X or Y position, press and hold the "Padlock" icon for 3 seconds. This will unlock the "Padlock" and allow you to use the keypad to adjust the values. To apply new setting, press [ENTER] on keypad, repeat the test cut and evaluate the alignment of both shapes. Repeat procedure until the desired alignment is achieved (diamond fits inside the square).

### 1.7.3 Calibration 2 Tangential Cut (2D) to Drag Crease (1B)

1. Navigate to Align Tool 2 to Tool 1 tab.



2. Select the Tangential Cut and Drag Crease tools.



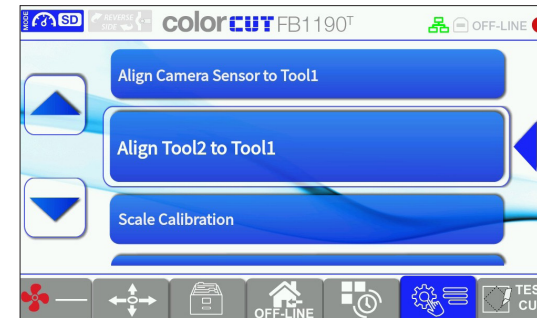
3. Place a blank sheet of paper on the flatbed.
4. Turn on the vacuum fan.
5. Make sure the carriage is positioned over a clear area of the media with approximately 25mm of space (1") available around the cutting head.
6. If there is not enough clear space then, press the [MOVE] tab button on the display:
  - Press the Up/Down arrow buttons on the keypad to move tools carriage across the media in Y direction
  - Press the Up/Down arrow buttons on the keypad to move tools carriage

across the media in X direction

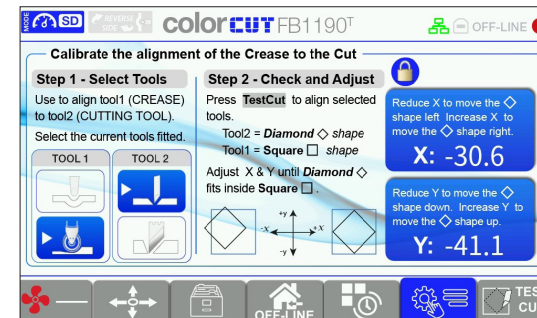
7. Press [TEST CUT] button. The FB1190T will create a diamond shape using Tool1 (the creasing tool) and cut a square around the diamond using Tool2 (the blade).
8. If you need to adjust the X or Y position, press and hold the "Padlock" icon for 3 seconds. This will unlock the "Padlock" and allow you to use the keypad to adjust the values. To apply new setting, press [ENTER] on keypad, repeat the test cut and evaluate the alignment of both shapes. Repeat procedure until the desired alignment is achieved (diamond fits inside the square).

### 1.7.4 Calibration 3 Tangential Crease (1A) to Drag Cut (2C)

1. Navigate to Align Tool 2 to Tool 1 tab.



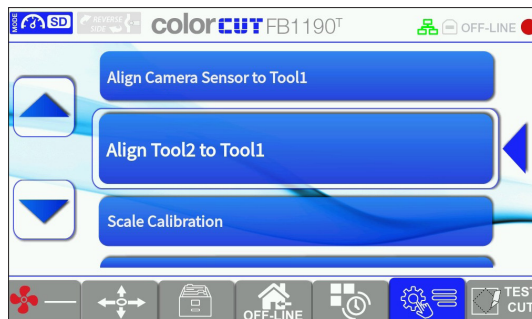
2. Select the Tangential Crease and Drag Cut tools.



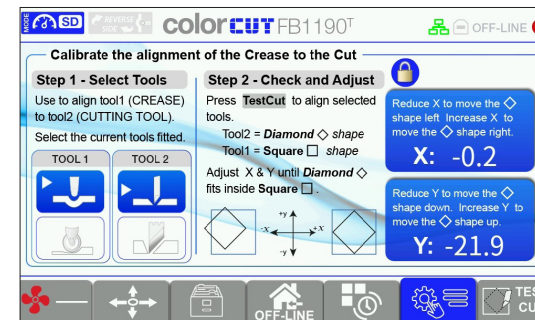
3. Place a blank sheet of paper on the flatbed.
4. Turn on the vacuum fan.
5. Make sure the carriage is positioned over a clear area of the media with approximately 25mm of space (1") available around the cutting head.
6. If there is not enough clear space then, press the [MOVE] tab button on the display:
  - Press the Up/Down arrow buttons on the keypad to move tools carriage across the media in Y direction
  - Press the Up/Down arrow buttons on the keypad to move tools carriage across the media in X direction
7. Press [TEST CUT] button. The FB1190T will crease a diamond shape using Tool1 (the creasing tool) and cut a square around the diamond using Tool2 (the blade).
8. If you need to adjust the X or Y position, press and hold the "Padlock" icon for 3 seconds. This will unlock the "Padlock" and allow you to use the keypad to adjust the values. To apply new setting, press [ENTER] on keypad, repeat the test cut and evaluate the alignment of both shapes. Repeat procedure until the desired alignment is achieved (diamond fits inside the square).

#### 1.7.5 Calibration 4 Drag Cut (2C) to Drag Crease (1B)

1. Navigate to Align Tool 2 to Tool 1 tab.



2. Select the Drag Cut to Drag Crease tools



3. Place a blank sheet of paper on the flatbed.
4. Turn on the vacuum fan.
5. Make sure the carriage is positioned over a clear area of the media with approximately 25mm of space (1") available around the cutting head.
6. If there is not enough clear space then, press the [MOVE] tab button on the display:
  - Press the Up/Down arrow buttons on the keypad to move tools carriage across the media in Y direction
  - Press the Up/Down arrow buttons on the keypad to move tools carriage across the media in X direction
7. Press [TEST CUT] button. The FB1190T will crease a diamond shape using Tool1 (the creasing tool) and cut a square around the diamond using Tool2 (the blade).
8. If you need to adjust the X or Y position, press and hold the "Padlock" icon for 3 seconds. This will unlock the "Padlock" and allow you to use the keypad to adjust the values. To apply new setting, press [ENTER] on keypad, repeat the test cut and evaluate the alignment of both shapes. Repeat procedure until the desired alignment is achieved (diamond fits inside the square).

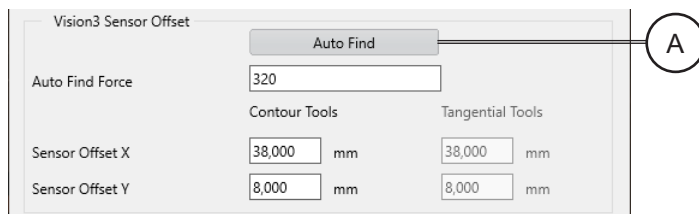
### 1.7.6 Calibration of the Vision3 sensor offset to the Cutting Blade

The ColorCut Flatbed cutter includes a Vision3 ARMS system (Automatic Registration Mark Sensor). The Vision3 ARMS sensor uses a high quality CCD camera to automatically detect Registration Marks (PageMARKs), enabling accurate cutting using ColorCut Pro. Being able to automatically detect the PageMARKs enables ColorCut Pro's sophisticated algorithms to compensate for any scale or skew errors during printing or any positional errors, adapting the cutting lines accordingly. In addition to reading PageMARKs the Vision3 camera can read job QR codes and provide live video echo to show progress during cutting.

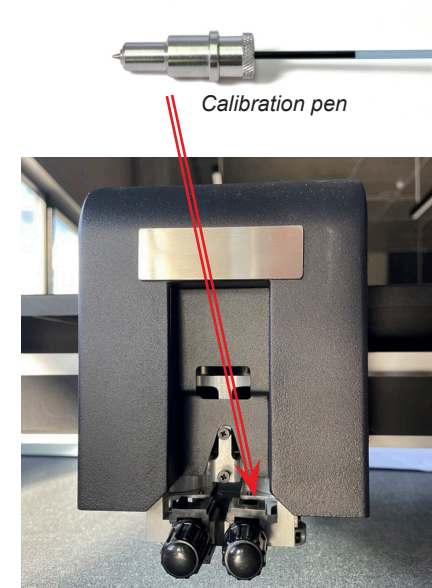
The Vision 3 ARMS sensor is mounted next to the cutting blade holder and the distance between the centre of the blade, and the centre of the Vision3 camera sensor (known as the sensor offset) must be compensated for to ensure accurate cutting.

Before you use the ColorCut Pro software for the first time you will need to calibrate the Sensor Offset so your software knows how to adjust the difference between the cutting blade and the actual optical sensor.

The Auto Find [A] feature calibrates the offset automatically. This is achieved by using the Pen Calibration Tool. The pen tool is used to draw a circle shape, the Vision3 ARMS sensor then moves over the shape, scans to locate the shape and determine the exact centre point of the circle shape. The ColorCut Pro software then calculates the distance the Vision3 sensor is offset from the centre of the cutting tool automatically.



1. Place the Calibration Pen Tool in to Tool Holder 2.

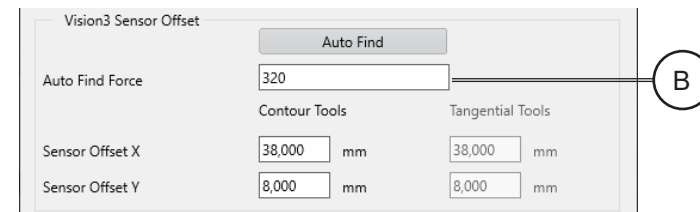


2. Set/Check the appropriate pressure for the Calibration Pen Tool. (Not too much pressure or you may break the pen).

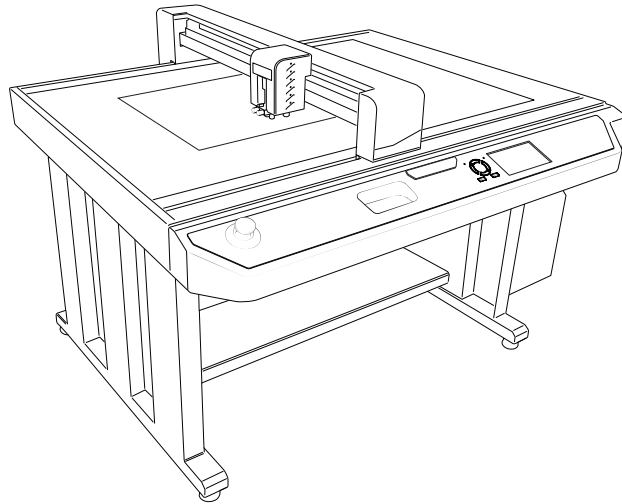
Check the AutoFind Force [B] pressure is set to between 200 - 320 gms of pressure.

Recommended pressure is 220 gms. For very thin paper it should be reduced.

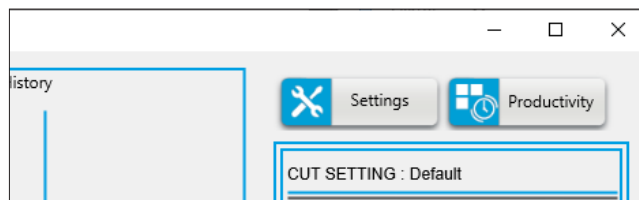
**Note:** Too little pressure and the pen will not write.



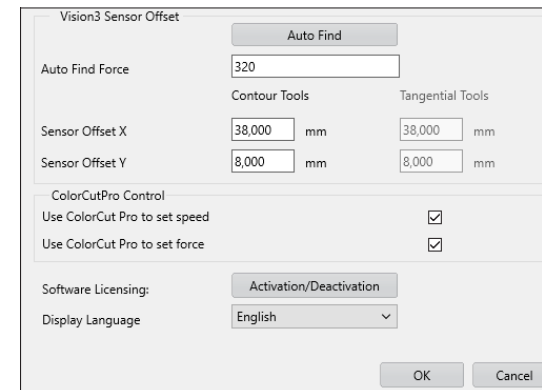
- Place a blank sheet of paper on the cutting table. Use sheet placement assistant for easier access.



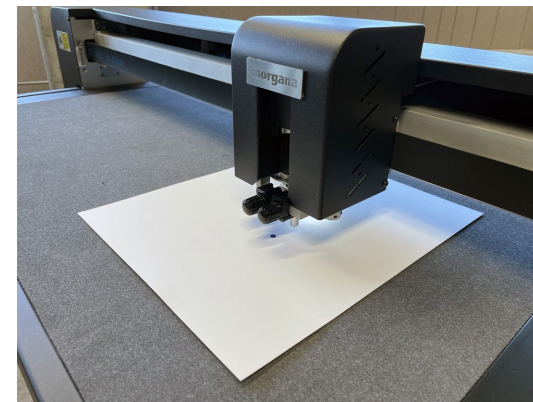
- Connect cutter to network using either Wi-Fi, Ethernet or USB.
- Launch the ColorCut Pro application from your computer.
- In the main ColorCut Pro application screen, click on the [Settings] button. The settings dialogue box will appear.



- Click the [Auto Find] button, a message will appear asking to place a sheet of media on the cutting table, click [OK].



- The cutter will use the Pen Calibration Tool, to repeatedly draw a spiral pattern to simulate a registration mark. It will then move the Vision3 sensor over to find the mark and automatically enter the values into your Sensor Offset X and Y settings. Once completed you will see a confirmation message.



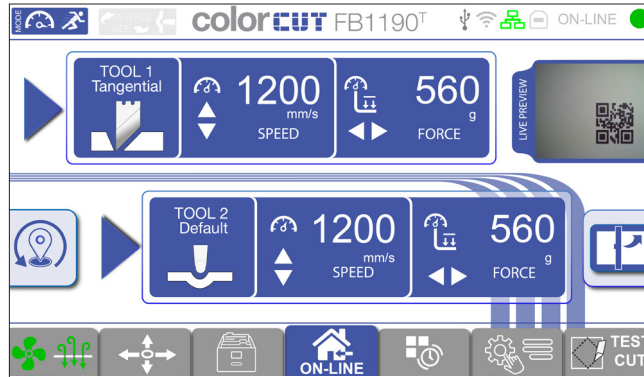
- You can now close this window, the calibration for ColorCut Pro is now complete.

Note: If you do not set the X and Y Sensor offset values (either using the Auto Find function - or manually) then the cutter will not cut accurately. Please ensure you have done this. However once done, this should not need to be repeated.

## 1.7.7 Tangential Tool Calibration

The Tangential Tool Calibration allows you to check rotation of Tangential Tool and perform calibration of the tool after replacement to compensate for alignment issues.

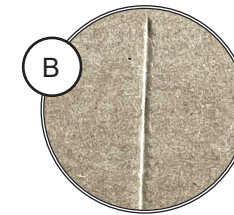
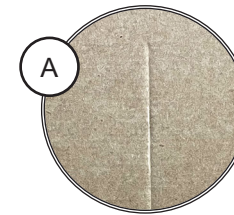
1. Place a blank sheet of paper on the cutting table. Use sheet placement assistant for easier access.



2. Turn on the vacuum table.
3. Move the carriage over media.
4. Press “Set Origin” on the Main screen.
5. Enter the settings menu and navigate to Tangential Tool Calibration.



6. Press the [RUN] button.  
The cutter will draw lines using the tangential tool.



7. Look at the tip of the crease [A] among the drawn lines. The center line should be an even point, not offset to either side.
8. If the middle line appears without any tearings [B], the wheel is calibrated correctly.
9. If tearings are visible on the middle line, search for the line with the least deformities among all drawn lines.
10. Adjust the value using the keypad's left and right arrows so it is according to the line with least deformities.
11. Press [Apply Calibration] and rerun the test by pressing [RUN].
12. Perform steps 6 to 11 until satisfied with the performance.